

## **The BCR-ABL1 transcript type influences response and outcome in Philadelphia chromosome-positive chronic myeloid leukemia patients treated frontline with imatinib**

This is the peer reviewed version of the following article:

*Original:*

Castagnetti, F., Gugliotta, G., Breccia, M., Iurlo, A., Levato, L., Albano, F., et al. (2017). The BCR-ABL1 transcript type influences response and outcome in Philadelphia chromosome-positive chronic myeloid leukemia patients treated frontline with imatinib. AMERICAN JOURNAL OF HEMATOLOGY, 92(8), 797-805 [10.1002/ajh.24774].

*Availability:*

This version is available <http://hdl.handle.net/11365/1006673> since 2017-05-18T14:38:07Z

*Published:*

DOI:10.1002/ajh.24774

*Terms of use:*

Open Access

The terms and conditions for the reuse of this version of the manuscript are specified in the publishing policy. Works made available under a Creative Commons license can be used according to the terms and conditions of said license.

For all terms of use and more information see the publisher's website.

(Article begins on next page)

## TITLE PAGE



Article type:

Research article

Title:

The BCR-ABL1 transcript type influences response and outcome in Philadelphia chromosome-positive chronic myeloid leukemia patients treated frontline with imatinib

Authors:

Fausto Castagnetti<sup>1</sup> , Gabriele Gugliotta<sup>1</sup>, Massimo Breccia<sup>2</sup>, Alessandra Iurlo<sup>3</sup> , Luciano Levato<sup>4</sup>, Francesco Albano<sup>5</sup>, Paolo Vigneri<sup>6</sup>, Elisabetta Abruzzese<sup>7</sup>, Giuseppe Rossi<sup>8</sup>, Serena Rupoli<sup>9</sup>, Francesco Cavazzini<sup>10</sup>, Bruno Martino<sup>11</sup>, Ester Orlandi<sup>12</sup>, Patrizia Pregno<sup>13</sup>, Mario Annunziata<sup>14</sup>, Emilio Usala<sup>15</sup>, Mario Tiribelli<sup>16</sup>, Simona Sica<sup>17</sup>, Massimiliano Bonifacio<sup>18</sup>, Carmen Fava<sup>19</sup>, Filippo Gherlinzoni<sup>20</sup>, Monica Bocchia<sup>21</sup>, Simona Soverini<sup>1</sup>, Maria Teresa Bochicchio<sup>1</sup>, Michele Cavo<sup>1</sup>, Giovanni Martinelli<sup>1</sup>, Giuseppe Saglio<sup>19</sup>, Fabrizio Pane<sup>22</sup>, Michele Baccarani<sup>23</sup> and Gianantonio Rosti<sup>1</sup> on behalf of the GIMEMA CML Working Party.

Affiliation list:

<sup>1</sup>Institute of Hematology “L. and A. Seràgnoli”, Department of Experimental, Diagnostic and Specialty Medicine, “S.Orsola-Malpighi” University Hospital, University of Bologna, Bologna, Italy; <sup>2</sup>Hematology Unit, Department of Cellular Biotechnologies and Hematology, “La Sapienza” University, Roma, Italy; <sup>3</sup>Onco-hematology of the Elderly Unit, Fondazione IRCCS Ca’ Granda Ospedale Maggiore Policlinico, Milano, Italy; <sup>4</sup>Hematology Unit, “Pugliese-Ciaccio” Hospital, Catanzaro, Italy; <sup>5</sup>Department of Hematology, University of Bari, Bari, Italy; <sup>6</sup>Unit of Medical Oncology, A.O.U. Policlinico “Vittorio Emanuele”, University of Catania, Catania, Italy; <sup>7</sup>Hematology Unit, “S. Eugenio” Hospital, Roma, Italy; <sup>8</sup>Hematology Unit, Azienda Ospedaliera “Spedali Civili”, Brescia, Italy; <sup>9</sup>Hematology Unit, Azienda Ospedaliero Universitaria Ospedali Riuniti, Ancona, Italy; <sup>10</sup>Chair of Hematology, Azienda Ospedaliero Universitaria Arcispedale S. Anna, University of Ferrara, Ferrara, Italy; <sup>11</sup>Hematology Unit, Azienda Ospedaliera “Bianchi-Melacrino-Morelli”, Reggio Calabria, Italy; <sup>12</sup>Hematology Unit, “S. Matteo” University Hospital, Pavia, Italy; <sup>13</sup>Hematology Unit, Azienda Ospedaliero-Universitaria Città della Salute e della Scienza, Torino, Italy; <sup>14</sup>Hematology Unit, “A. Cardarelli” Hospital, Napoli, Italy; <sup>15</sup>Hematology Unit, “A. Businco” Hospital, Cagliari, Italy; <sup>16</sup>Division of Hematology and BMT, Department of Experimental and Clinical Medical Sciences, Azienda Ospedaliero-Universitaria di Udine, Udine,

This article has been accepted for publication and undergone full peer review but has not been through the copyediting, typesetting, pagination and proofreading process which may lead to differences between this version and the Version of Record. Please cite this article as an ‘Accepted Article’, doi: 10.1002/ajh.24774

Italy; <sup>17</sup>Chair of Hematology, “A. Gemelli” University Hospital, Roma, Italy; <sup>18</sup>Hematology Section, Department of Medicine, University of Verona, Verona, Italy; <sup>19</sup>Hematology Unit, “Ordine Mauriziano” Hospital, University of Torino, Torino, Italy; <sup>20</sup>Hematology Unit, “Ca’ Foncello” Hospital, ULSS2 Marca Trevigiana, Treviso, Italy; <sup>21</sup>Hematology Unit, Azienda Ospedaliera Universitaria Senese, University of Siena, Siena, Italy; <sup>22</sup>Chair of Hematology, Department of Biochemistry and Medical Biotechnologies, “Federico II” University, Naples, Italy; <sup>23</sup>Department of Hematology and Oncology “L. and A. Seràgnoli”, University of Bologna, Bologna, Italy.

Full address for correspondance:

Fausto Castagnetti MD, PhD

Institute of Hematology “L. & A. Seràgnoli”

Department of Experimental, Diagnostic and Specialty Medicine

University of Bologna

Via Massarenti, 9 - 40138 Bologna (Italy)

E-mail: fausto.castagnetti@unibo.it

Phone: +39 051 6364076; Fax: +39 051 6364037

Abstract word count: 247

Text word count: 2944

Table count: 1

Figure count: 3

Reference count: 44

Supplemental files: 1 (including 4 tables and 2 figures)

Short title for the running head:

BCR-ABL1 transcript type influence response and outcome in CML treated with imatinib

Keywords:

Chronic myeloid leukemia, BCR-ABL1, transcript type, Philadelphia chromosome, imatinib, prognosis.

## ABSTRACT

The most frequent BCR-ABL1 fusion transcripts in chronic myeloid leukemia (CML) are the e13a2 (b2a2) and the e14a2 (b3a2) ones. In the imatinib era few studies addressing the prognostic significance of the BCR-ABL1 transcript type in early chronic phase CML have been published. Overall, these studies suggest that in e14a2 patients the response to imatinib is faster and deeper. To evaluate if the BCR-ABL1 transcript type (e13a2 compared to e14a2) affect the response to imatinib and the clinical outcome in newly diagnosed adult CML patients, 559 patients enrolled in 3 prospective studies (NCT00514488, NCT00510926, observational study CML/023) were analyzed. A qualitative PCR was performed at baseline: 52% patients had a e14a2 transcript, 37% a e13a2 transcript, 11% co-expressed both transcripts and 1% had other rare transcripts. The median follow-up was 76 months (95% of the patients had at least a 5-year observation). The complete cytogenetic response rates were comparable in e14a2 and e13a2 patients. The median time to MR<sup>3.0</sup> (6 and 12 months) and MR<sup>4.0</sup> (41 and 61 months) was significantly shorter for e14a2 patients compared to e13a2 patients, with a higher cumulative probability of MR<sup>3.0</sup> (88% and 83%,  $p<0.001$ ) and MR<sup>4.0</sup> (67% and 52%,  $p=0.001$ ). The 7-year overall survival (90% and 83%,  $p=0.017$ ), progression-free survival (89% and 81%,  $p=0.005$ ) and failure-free survival (71% and 54%,  $p<0.001$ ) were significantly better in patients with e14a2 transcript. In conclusion, patients with e13a2 transcript had a slower molecular response with inferior response rates to imatinib and a poorer long-term outcome.

## INTRODUCTION

Chronic myeloid leukemia (CML) is a myeloproliferative disorder characterized by the presence of the BCR-ABL1 fusion gene. The BCR-ABL1 gene encodes a constitutively active tyrosine kinase, which leads to the activation of multiple signaling pathways involved in cell-cycle, adhesion and apoptosis (1-2). The location of the breakpoints in the ABL1 and BCR genes is variable: the breakpoint in the ABL1 gene can occur anywhere within a large area of more than 300 kb, while in the great majority of CML patients the breakpoints of BCR gene cluster within the Major Breakpoint Cluster Region (M-BCR). The M-BCR (5.8 kb) span exons e12-e16, historically named b1-b5, but the transcribed mRNA has either a e13a2 (b2a2) or a e14a2 (b3a2) junction. In 5-10% of patients, both e13a2 and e14a2 transcripts may be detected by a qualitative RT-QPCR. The fusion protein encoded by BCR-ABL1 varies in size, depending on the breakpoints: both e13a2 and e14a2 mRNAs encode a p210 (1-3). In the era of conventional chemotherapy and interferon, several studies have investigated whether the transcript type may influence the outcome of CML patients: overall, these studies failed to detect a significant and robust influence of transcript type on response and clinical outcome (4-7). Imatinib mesylate (IM, Gleevec – Novartis Pharma) is a 2-phenylaminopyrimidine derivative active in Philadelphia-chromosome (Ph) positive CML through a selective inhibition of the BCR-ABL1 protein. In the last decade IM has become the standard therapy of CML patients in early chronic phase (ECP) (8-10). In the IM era some studies addressing the prognostic significance of BCR-ABL1 transcript type have been published, suggesting that in e14a2 patients the response to imatinib is faster and deeper (11-14). However, the evidence is weak and mostly limited to response, particularly to molecular response. A recent analysis, conducted within the European Treatment and Outcome Study for CML (EUTOS) CML registry, did not detect survival differences (overall survival and CML-related death) according to the transcript type, but the response and other outcome measures have not been investigated (15). Small differences are difficult to detect, requiring large number of patients and prospective studies. For this purpose, we have analyzed a large cohort of 559 patients who were enrolled in prospective GIMEMA studies of treatment with IM in first-line.

## METHODS

Five hundred and fifty-nine patients were consecutively enrolled in 3 concurrent multicentric prospective studies of the Italian Group for Hematological Malignancies of Adults (GIMEMA) CML Working Party (WP): CML/021 (Clin Trials Gov. NCT00514488), phase 2, exploring IM 800 mg in intermediate Sokal risk CML patients (16); CML/022 (Clin Trials Gov. NCT00510926), phase 3, comparing IM 400 mg vs 800 mg in high Sokal risk CML patients (17); CML/023, observational, first-line treatment with IM 400 mg (18). All patients, at least 18 years old, had a Ph+ and/or BCR-ABL1+ CML in ECP ( $\leq 6$  months from diagnosis to IM start; hydroxyurea only allowed). All patients provided written informed consent before the enrollment. The studies were reviewed and approved by the Internal Review Board of all participating institutions, and performed in accordance with the Declaration of Helsinki. A retrospective analysis of the three prospective clinical studies was performed. The intention-to-treat population of each study was analyzed.

The chronic, accelerated or blast disease phase (CP, AP, BP) were defined according to current European LeukemiaNet (ELN) criteria (10). The baseline risk assessment was made using Sokal (19), EURO (20), and EUTOS (21) risk scores. Cytogenetic analyses based on G- or Q-banding were performed on bone marrow (BM) samples at baseline, after 6 and 12 months, and every 6 months thereafter, or in case of treatment failure. Cytogenetic responses were defined according to ELN criteria (10). After the achievement of a confirmed complete cytogenetic response (CCyR), if less than 20 metaphases were available, the stability of CCyR could be assessed by fluorescence-in-situ-hybridization (FISH) analysis on BM or peripheral blood (PB) cells (CCyR was defined as less than 1% BCR-ABL1 positive nuclei over at least 200 cells) (10). A qualitative reverse transcription (RT) polymerase chain reaction (PCR) for BCR-ABL1 transcript was routinely performed at enrollment. Real-time quantitative (RQ) PCR was performed at 3, 6, 12 months, and every 6 months thereafter, according to ELN and EUTOS recommendations (22-26). ABL1 was used as housekeeping gene. A major molecular response (MMR or  $MR^{3.0}$ ) was defined as a BCR-ABL1 transcript  $\leq 0.1\%$ , while a deep molecular response ( $MR^{4.0}$ ) was defined as a BCR-ABL1 transcript  $\leq 0.01\%$  in samples with  $> 10,000$  ABL1 copies (22-26).

Baseline characteristics of patients with different transcript types were compared using the Student *t* test, Pearson's chi square test or Fisher's exact test, as appropriate. The time to response were calculated from treatment start until the first achievement of response. The cumulative incidences of response were estimated under consideration of competing risks (27,28) defined by progression and death. Comparisons between cumulative incidences were performed by the Gray test (29). Overall survival (OS) was calculated from treatment start to death. All deaths, by any cause and at any time

(including deaths occurred after IM discontinuation) were considered. Progression-free survival (PFS) was calculated from treatment start to progression or death, whichever came first. Progression was defined as the transformation to AP or BP on IM or subsequent therapy. Failure-free survival (FFS) was calculated from treatment start to IM failure, progression, or death, whichever came first. Failures were retrospectively defined according to 2013 ELN criteria (10); as the ELN criteria changed over time, not all the failures according to 2013 ELN criteria were followed by a change of treatment. Probabilities of OS, PFS and FFS were estimated using the Kaplan-Meier method and compared by the log-rank test. A multivariate Cox analysis (30) was used to assess the relationship between various predictors of interest and response or outcome. The proportional hazard assumption was verified by Schoenfeld residuals analysis.

## RESULTS

### *Patients*

In all the 559 patients a qualitative RT-PCR assay was performed before treatment start: 203 patients (36%) had a e13a2 transcript and 290 patients (52%) had a e14a2 transcript. All analyses and calculations were made on these 493 patients. The remaining patients had both e13a2 and e14a2 transcripts (N = 60, 11%), or other rare transcripts (N = 6, 1%; e1a2 and e19a2 in 2 and 4 patients, respectively). Detailed baseline characteristics according to the transcript type are presented in table I. The baseline characteristics of patients expressing both e13a2 and e14a2 transcripts and patients with rare transcripts are presented in table Is and table IIs. The patients with e13a2 or e14a2 transcript were comparable for demographic and hematologic characteristics, except for the proportion of male patients, that was higher in the e13a2 group ( $p=0.050$ ), and for the percentages of eosinophils, that was significantly lower in the e13a2 group ( $p=0.009$ ). The patients distribution according to Sokal (19), EURO (20), and EUTOS (21) score was comparable. The proportion of patients with clonal chromosomal abnormalities (CCA) in Philadelphia chromosome positive (Ph+) cells at baseline, variant translocations or derivative 9 deletions were similar in the 2 groups. In the e14a2 group a slightly higher proportion of patients was treated with IM 800 mg daily as initial dose (28%, compared with 20% in the e13a2 group,  $p=0.034$ ).

### *Response and outcome by transcript type*

The median follow-up was 76 months (range 49-94 months) and 75 months (range 7-99 months) in e13a2 and e14a2 patients, respectively ( $p = 0.763$ ). The proportion of patients with an observation equal to or longer than 60 months was similar: 96% and 94% ( $p = 0.391$ ) in e13a2 and e14a2 patients, respectively.

The cytogenetic and molecular response rates at milestones are shown in table IIIs: the CCyR rates at 12 months were comparable (75% and 79% in patients with e13a2 or e14a2 mRNA,  $p=0.274$ ), but the rates of MMR at 18 months and  $MR^{4.0}$  at 36 months were significantly lower in patients with e13a2 transcript (52% and 67%,  $p=0.001$ , and 20% and 30%,  $p=0.013$ , respectively). The proportion of not evaluable patients was comparable in the 2 groups.

As far as the rapidity of response, the median time to CCyR was 6 months in both groups, with a comparable overall estimated probability of CCyR: 89% and 88% in patients with e13a2 and e14a2 transcript,  $p = 0.916$ . The patients with e13a2 transcript achieved a MMR and a  $MR^{4.0}$  significantly slower than patients with e14a2 transcript: the median time to MMR was 12 and 6 months, with 83% and 88% overall estimated probability of MMR in e13a2 patients and e14a2 patients ( $p <$



0.001), respectively; the median time to MR<sup>4.0</sup> was 61 and 41 months and the overall estimated probability of MR<sup>4.0</sup> was 52% and 67% in the 2 groups ( $p=0.001$ ), respectively (figure 1).

The 7-year estimated probabilities of OS (83% and 90%,  $p = 0.017$ ), PFS (81% and 89%,  $p = 0.005$ ) and FFS (54% and 71%,  $p < 0.001$ ) were significantly lower in patients with e13a2 transcript (figure 2). In multivariate Cox analysis (30), the transcript type retained its prognostic significance on time to MMR, time to MR<sup>4.0</sup>, OS, PFS and FFS (table IVs), when adjusted for other relevant variables.

The patients receiving a salvage therapy (one or more tyrosine kinase inhibitors, conventional chemotherapy, allogeneic stem cell transplantation) were 64 (31%) and 71 (24%) in the e13a2 and e14a2 groups, respectively. Molecular data after treatment change were not prospectively collected, so the impact on molecular response cannot be assessed. The patients who died after progression to advanced phase were 13/64 (20%) and 13/71 (18%), respectively.

The responses and the survival probabilities of patients co-expressing the e13a2 and the e14a2 transcripts were similar to or even better than the ones of e14a2 patients (figures 1s and 2s). The response and the outcome of patients with rare transcripts are presented in table IIs.

#### *Prognostic impact of transcript type according to the initial imatinib dose*

Analyzing separately the patients treated with IM 400 mg ( $n = 371$ ; e13a2 and e14a2 transcript in 163 and 208 patients, respectively) or IM 800 mg daily ( $n = 122$ ; e13a2 and e14a2 transcript in 40 and 82 patients, respectively), the response differences according to the transcript type (e13a2 versus e14a2) were confirmed: the cumulative incidences of MMR were 84% and 89% in patients treated with standard-dose IM (median time to MMR: 12 and 6 months, respectively;  $p = 0.001$ ) and 73% and 82% in patients treated with high-dose IM (median time to MMR: 15 and 6 months, respectively;  $p = 0.026$ ); the cumulative incidences of MR<sup>4.0</sup> were 57% and 68% in patients treated with 400 mg (median time to MR<sup>4.0</sup>: 54 and 41 months, respectively;  $p = 0.024$ ) and 30% and 60% in patients treated with 800 mg daily (median time to MR<sup>4.0</sup> not reached and 48 months, respectively;  $p = 0.007$ ).

In patients treated with standard-dose IM, the transcript type was able to predict significantly different 7-year probabilities of OS, PFS and FFS (figure 3). In the high-dose IM group, the patients with e13a2 transcript had inferior PFS (71% and 86%,  $p = 0.039$ ) and FFS (44% and 67%,  $p = 0.011$ ), but no difference could be detected in OS (82% and 87%,  $p = 0.232$ ) (figure 3).

## DISCUSSION

The great majority of CML patients have a mRNA transcript with a e13a2 or a e14a2 junction (1-3). The information on the prognostic impact of BCR-ABL1 transcript type in ECP CML patients treated frontline with IM is still limited to few studies. In 74 patients treated with IM 400 mg it was found that the CCyR rate at one year was higher in e14a2 patients than in e13a2 ones (54% vs 24%,  $p = 0.01$ ) (11). In a much larger study of 1105 patients, it was found that the cumulative probability of achieving MMR and MR<sup>4.0</sup> was significantly higher in e14a2 patients than in e13a2 ones (12). In 481 patients treated frontline with IM or with second generation TKIs, the CCyR and the MMR rate at several time points were higher in e14a2 patients (13). A MR<sup>4.0</sup> was reported more frequently, in e14a2 patients than in e13a2 ones (57% vs 27%,  $p = 0.003$ ) (14). However, in only one study (13) a difference in outcome (transformation-free survival, 98% versus 91%,  $p=0.01$ ) was detectable; no differences in overall survival or other outcome measures were reported. A large analysis on 1494 european patients failed to detect survival differences, considering either deaths for any reason or CML-related deaths; responses and other outcome measures have not been analyzed (15).

In line with prior reports, we have also found that the e13a2 transcript was associated with a poorer response to IM: MMR and MR<sup>4.0</sup> rates were significantly lower with a significantly longer time to the first MMR and MR<sup>4.0</sup>. As predictable, since CCyR and MMR are the best surrogate markers of the outcome (8-10), we also found that the e13a2 transcript was associated with a poorer outcome (OS, PFS and FFS). Moreover, the deep molecular response may predict the probability of achieving a treatment-free remission (TFR) (10). The differences between transcripts were not influenced by confounding factors: the analysis was performed considering the intention-to-treat population of each protocol, the proportion of patients lacking of cytogenetic or molecular evaluation (weighting as a negative result) was balanced between the two groups, and the relative risk distribution according to Sokal (19), EURO (20) and EUTOS (21) scoring systems was comparable. By multivariable analysis, the prognostic value of transcript type was even stronger than that of any other variables.

There were some differences between the two groups. In the e13a2 group there were more males, and males may have a worse prognosis; moreover, in the same group the baseline percentage of eosinophils in peripheral blood (PB) was lower, and eosinophils have been shown to have a worse prognosis (20). More importantly, the proportion of patients treated with IM 800 mg daily as initial dose was lower in e13a2 group. High-dose IM (equal to or higher than 600 mg daily) has not been approved yet as first-line therapy of CML patients in CP. Four randomized studies comparing 400 mg versus 800 mg IM daily have been published, three for patients of any risk category (31-33) and

one for high Sokal score patients only (17). A significant advantage of high-dose treatment was shown in only one study (32), but in all four studies there was a trend in favor of high doses. In our study, due to the inclusion and exclusion criteria of studies CML/021 and CML/022, all the patients treated with high dose IM had intermediate or high Sokal score. To test if IM dose could have influenced the results of this study, we made all calculations separately, according to the initial IM dose, and we found that in e13a2 patients responses and outcomes were poorer irrespective of IM dose, with the exception of OS in patients treated with high-dose (no significant difference).

The difference between e13a2 and e14a2 patients are difficult to understand and to explain. The e13a2 and e14a2 hybrid mRNA and protein differ in size by 75 bases and 25 amino acids, respectively. These sequences are a putative site for calcium-dependent lipid binding, but the exact function is currently unknown (1-3). With conventional chemotherapy or alpha-interferon, the BCR-ABL1 transcript type had no strong effects on the response and the outcome (4-7). Considering the selectivity of IM, the emergence of outcome differences between e13a2 and e14a2 patients suggests a potential BCR-ABL1 dependent mechanism. A higher pCrKL/CrKl ratio at diagnosis has been described in patients with a e13a2 transcript (11), but the higher pre-treatment tyrosine kinase activity was not evaluated in a multivariate analysis including other relevant variables (i.e. disease score). We may hypothesize a more efficient tyrosine kinase activity in e13a2 patients, but a systematic evaluation of the pre-treatment tyrosine kinase activity has not been accomplished in our study. On the other hand, the junction sequences product of the BCR-ABL1 fusion can bind several human leukocyte antigen (HLA) class I and II molecules and to elicit peptide-specific T-cell responses (34-38). We may speculate on a putative different immunogenic ability of the e13a2 protein, which is shorter than the e14a2 one and have different junctional sequences, but no evidences supporting this hypothesis are available. Finally, the response and outcome differences between e13a2 and e14a2 patients could be due to the crystallographic structure of the BCR-ABL protein or to a different interaction between the IM molecule and the p210 protein, but clarifying data have not been published yet.

The current CML therapeutic scenario has been enriched by FDA and EMA approval of nilotinib (NIL) and dasatinib (DAS) as frontline treatment. In early CP CML, both drugs induced significantly superior rates of cytogenetic and molecular responses as compared with IM (39-42). So far, few data are available about the relationship between the BCR-ABL1 transcript type and the response to second generation TKIs: a preliminary study from the GIMEMA CML WP on 345 patients treated with NIL based regimens, despite a trend for lower response rates and inferior outcome in patients with e13a2 transcript, did not detect significant differences between e13a2 and e14a2 patients (43). Another preliminary study from MD Anderson Cancer Center on 204 patients

treated with NIL or DAS, reported a lower rate of molecular responses and a trend for inferior EFS in e13a2 patients (44).

We conclude that the e13a2 BCR-ABL1 fusion transcript affects the rate, the depth, and the speed of the response to treatment with imatinib firstline, and that including the transcript type in the calculation of the baseline risk scores may improve prognostic stratification and may help the choice of the best treatment policy. More data and a longer follow-up, are required to understand if the transcript type influences the immunologic control of residual disease, so affecting the probability of achieving a TFR.

## ACKNOWLEDGMENTS

This study has been supported by: BolognAIL, PRIN 2005 and PRIN 2007, AIRC, Fondazione del Monte di Bologna e Ravenna, University of Bologna.

The following members of the “GIMEMA Working Party on CML”, formerly “ICSG on CML” actively participated in this study, enrolling patients and collecting clinical data: Lucarelli G, Polimeno G (Internal Medicine Unit, “F. Miulli” Hospital, Acquaviva delle Fonti, Bari); Ladetto M, Pini M (Department of Hematology, A.O. Nazionale Santi Antonio e Biagio e C. Arrigo, Alessandria); Scortechini AR, Leoni P (Hematology Department, University of Ancona, Azienda Ospedaliero Universitaria Ospedali Riuniti di Ancona, Ancona); Galieni P, Bigazzi C (Hematology Unit, Presidio Ospedaliero “C. e G. Mazzoni”, Ascoli Piceno); Cantore N, Palmieri F (Hematology Division, Ospedale Civile “San Giuseppe Moscati”, Avellino); Specchia G, Russo Rossi A (Chair of Hematology, University of Bari, Bari); Rambaldi A, Intermesoli T (Hematology Unit, Azienda Ospedaliera Papa Giovanni XXIII, Bergamo); Palandri F, Luatti S, Testoni N, Iacobucci I, Venturi C, Mancini M, Apolinari M, Fogli M (Institute of Hematology “Seràgnoli”, Department of Experimental, Diagnostic and Specialty Medicine, University of Bologna, Bologna); Capucci A, D’Adda M (Hematology Unit, Azienda Ospedaliera “Spedali Civili”, Brescia); Melpignano A, Girasoli M (Hematology Division, Ospedale “Perrino”, Brindisi); Cabras MG (Hematology Unit, Ospedale Oncologico “A. Businco”, Cagliari); De Biasi E (Hematology Unit, Presidio Ospedaliero Camposampiero, Camposampiero, Padova); Tagariello G, Sartori R (Hematology Unit, “San Giacomo” Hospital, Castelfranco Veneto, Treviso); Di Raimondo F, Stagno F (Hematology Unit, “Ferrarotto” Hospital, Catania); Molica S, Lentini M (Hematology Unit, “Pugliese” Hospital, Catanzaro); Spedini P, Viganò C (Hematology and BMT Unit, “Istituti Ospitalieri di Cremona” Hospital, Cremona); Massaia M, Rapezzi D (Division of Hematology, “Santa Croce e Carle” Hospital, Cuneo); Cuneo A, Ciccone M (Chair of Hematology, Dipartimento di Scienze Mediche, “Arcispedale S. Anna” University Hospital, Ferrara); Bosi A, Gozzini A (Chair of Hematology, University of Firenze, Firenze); Gobbi M, Bergamaschi M (Chair of Hematology, IRCCS San Martino, Genova); Chianese R (Hematology Unit, Ospedali Riuniti ASL TO4, Ivrea, Torino); Cimino G, Ciccone F (Hematology Unit, Ospedale Civile, Latina); Capochiani E, Pelosini M (Oncology and Hematology Unit, Ospedali Civili, Livorno); Musolino C, Russo S (Division of Hematology, University of Messina, Messina); Cortelezzi A (Oncohematology Unit of the Elderly, Oncohematology Division, IRCCS Ca’ Granda – Maggiore Policlinico Hospital Foundation, Milano); Luppi M, Marasca R (Chair of Hematology, University of Modena and Reggio Emilia, Modena); Gambacorti-Passerini C (Department of Hematology, “San Gerardo” Hospital, Monza); Luciano L, Izzo B (Department of Biochemistry and Medical Biotechnologies, “Federico II”

University, Napoli); Ferrara F (Hematology and Bone Marrow Transplantation Unit, “Cardarelli” Hospital, Napoli); Mettivier V, Sessa U (Hematology Unit, “Cardarelli” Hospital, Napoli); Latte G, Noli D (Hematology Unit, “San Francesco” Hospital, Nuoro); Rege-Cambrin G (Department of Clinical and Biological Sciences, “San Luigi Gonzaga” University Hospital, Orbassano, TO); Semenzato G, Binotto G (Department of Internal Medicine, University of Padova, Padova); Fabbiano F, Malato A (Hematology Unit, “V. Cervello” Hospital, Palermo); Siragusa S, Caracciolo C (Chair of Hematology, University of Palermo, Palermo); Musso M, Porretto F (Oncology and Bone Marrow Transplantation Unit, “La Maddalena” Hospital, Palermo); Cazzola M (Hematology Unit, “S. Matteo” University Hospital, Pavia); Falini B, Falzetti F (Division of Hematology and Clinical Immunology, Department of Medicine, University of Perugia, Perugia); Visani G, Isidori A (Hematology Unit, “San Salvatore” Hospital, Pesaro); Di Bartolomeo P, Di Lorenzo R (Hematology Unit, Ospedale Civile dello Spirito Santo, Pescara); Vallisa D, Trabacchi E (Hematology Division, “Guglielmo da Saliceto” Hospital, Piacenza); Pizzuti M (Hematology Unit, “San Carlo” Hospital, Potenza); Lanza F, Salvucci M (Hematology Unit, “Santa Maria delle Croci” Hospital, Ravenna); Ronco F, Ielo D (Hematology Unit, Ospedali Riuniti, Reggio Calabria); Merli F, Capodanno I (Hematology Unit, Arcispedale Santa Maria Nuova, Reggio Emilia); Tosi P, Merli A (Hematology Unit, Ospedale Infermi Azienda Unità Sanitaria, Rimini); Sorà F, (Istituto di Semeiotica Medica, Università Cattolica del Sacro Cuore-Policlinico “Gemelli”, Roma); Latagliata R, Foà R (Chair of Hematology, “La Sapienza” University, Roma); De Fabritiis P, Trawiska M (Hematology Unit, “S. Eugenio” Hospital, Roma); Amadori S, Cantonetti M (Department of Hematology, “Tor Vergata” University, Roma); Pierelli L, Pacilli L (Hematology and Stem Cell Transplantation Unit, Azienda Ospedaliera San Camillo Forlanini, Roma); Bagnato A, Cedrone M (Hematology Unit, Ente Ospedaliero San Giovanni Addolorata, Roma); Mengarelli A, Romano A (Hematology Unit, Istituto Regina Elena, Roma); Tafuri A, Montefusco E (Hematology Unit, “Sant’Andrea” Hospital, Roma); Iuliano F, Infusino S (Hematology Unit, Presidio Ospedaliero “N. Giannettasio”, Rossano Calabro); Dore F, Fozza C (Institute of Hematology, University of Sassari, Sassari); Aprile L, Defina M (Chair of Hematology, University of Siena, Siena); Liberati AM, Luzi D (Hematology and Oncology Unit, Azienda Ospedaliera “S. Maria”, Terni); Boccadoro M, Ferrero D (Section of Hematology, Department of Molecular Biotechnology and Health Sciences, University of Torino, Torino); Vitolo U, Nicolosi M (Hematology Unit, Azienda Ospedaliero Universitaria Città della Salute e della Scienza, University of Torino, Torino); Gottardi M, Calistri E (Hematology Unit, “Ca’ Foncello” Hospital, Treviso); Fanin R (Chair of Hematology, University of Udine, Udine); Pizzolo G, Krampera M (Chair of Hematology, University of Verona, Verona); Di Bona E (Hematology Unit, Ospedale Civile, Vicenza).



## REFERENCES

1. Deininger MW, Goldman JM, Melo JV. The molecular biology of chronic myeloid leukemia. *Blood*. 2000;96:3343-3356.
2. Quintas-Cardama A and Cortes J. Molecular biology of bcr-abl1-positive chronic myeloid leukemia. *Blood*. 2009;113:1619-1630.
3. Melo J. The diversity of BCR-ABL fusion proteins and their relationship to leukemia phenotype. *Blood*. 1996;88:2375-2384.
4. Mills KL, Mackenzie ED, Birnie GD. The site of the breakpoint within the bcr is a prognostic factor in Philadelphia chromosome-positive chronic myeloid leukemia. *Blood*. 1989;72:1237-1241.
5. Mills KI, Benn P, Birnie GD. Does the Breakpoint Within the Major Breakpoint Cluster Region (M-bcr) Influence the Duration of the Chronic Phase in Chronic Myeloid Leukemia? An Analytical Comparison of Current Literature. *Blood*. 1991;78:1155-1161.
6. Shepherd P, Suffolk R, Halsey J, et al. Analysis of molecular breakpoint and m-RNA transcripts in a prospective randomized trial of interferon in chronic myeloid leukaemia: no correlation with clinical features, cytogenetic response, duration of chronic phase, or survival. *Br J Haematol*. 1995;89:546-554.
7. The Italian Cooperative Study Group on Chronic Myeloid Leukemia. Chronic myeloid leukemia, BCR/ABL transcript, response to interferon, and survival. *Leukemia*. 1995;9:1648-1652.
8. Baccarani M, Saglio G, Goldman J, et al. Evolving concepts in the management of chronic myeloid leukemia: recommendations from an expert panel on behalf of the European LeukemiaNet. *Blood*. 2006;108:1809-1820.
9. Baccarani M, Cortes J, Pane F, et al. Chronic myeloid leukemia: an update of concepts and management recommendations of European LeukemiaNet. *J Clin Oncol*. 2009;27:6041-6051.
10. Baccarani M, Deininger MW, Rosti G, et al. European LeukemiaNet recommendations for the management of chronic myeloid leukemia. 2013. *Blood*. 2013;122:872-884.
11. Lucas CM, Harris RJ, Giannoudis A, et al. Chronic myeloid leukemia patients with the e13a2 BCR-ABL fusion transcript have inferior responses to imatinib compared to patients with the e14a2 transcript. *Haematologica*. 2009;94:1362-1367.

12. Hanfstein B, Lauseker M, Hehlmann R, et al. Distinct characteristics of e13a2 versus e14a2 BCR-ABL1 driven chronic myeloid leukemia under first-line therapy with imatinib. *Haematologica*. 2014;99:1441-1447.
13. Jain P, Kantrajan H, Patel KP, et al. Impact of BCR-ABL transcript type on outcome in patients with chronic-phase CML treated with tyrosine kinase inhibitors. *Blood*. 2016;127:1269-1275.
14. Bonifacio M, Scaffidi L, Binotto G, et al. Predictive factors of stable deep molecular response in chronic myeloid leukemia patients treated with standard dose imatinib: a study from "Gruppo Triveneto LMC". *ASH Annual Meeting*. *Blood*. 2015;126:abstract 597.
15. Pfirrmann M, Evtimova D, Saussele S, et al. No influence of BCR-ABL1 transcript types e13a2 and e14a2 on long-term survival: Results in 1494 patients with chronic myeloid leukemia treated with imatinib. *J Cancer Res Clin Oncol*. 2017 Jan 12. doi: 10.1007/s00432-016-2321-2. [Epub ahead of print]
16. Castagnetti F, Palandri F, Amabile M, et al. Results of high-dose imatinib mesylate in intermediate sokal risk chronic myeloid leukemia patients in early chronic phase: a phase II trial of the GIMEMA CML WP. *Blood*. 2009; 113:3428-34.
17. Baccarani M, Rosti G, Castagnetti F, et al. Comparison of imatinib 400 mg and 800 mg daily in the front-line treatment of high-risk, Philadelphia-positive chronic myeloid leukemia: a European LeukemiaNet Study. *Blood*. 2009;113:4497-4504.
18. Castagnetti F, Gugliotta G, Breccia M, et al. Long-term outcome of chronic myeloid leukemia patients treated frontline with imatinib. *Leukemia*. 2015;29:1823-1831.
19. Sokal JE, Cox EB, Baccarani M, et al. Prognostic discrimination in "good risk" chronic granulocytic leukemia. *Blood*. 1984;63:789-799.
20. Hasford J, Pfirrmann M, Hehlmann R, et al. A new prognostic score for survival of patients with chronic myeloid leukemia treated with interferon. *J Natl Cancer Inst*. 1998;90:850-858.
21. Hasford J, Baccarani M, Hoffmann V, et al. Predicting complete cytogenetic response and subsequent progression-free survival in 2060 patients with CML on imatinib treatment: the EUTOS score. *Blood*. 2011;118:686-692.
22. Hughes T, Deininger M, Hochhaus A, et al. Monitoring CML patients responding to treatment with tyrosine kinase inhibitors: review and recommendations for harmonizing current methodology for detecting BCR-ABL transcripts and kinase domain mutations and for expressing results. *Blood*. 2006;108:28-37.



23. Branford S, Fletcher L, Cross NC, et al. Desirable performance characteristics for BCR-ABL measurement on an international reporting scale to allow consistent interpretation of individual patient response and comparison of response rates between clinical trials. *Blood*. 2008;112:3330-3338.
24. Muller MC, Erben P, Saglio G, et al. Harmonization of BCR-ABL mRNA quantification using a uniform multifunctional control plasmid in 37 international laboratories. *Leukemia*. 2008;22:96-102.
25. Cross NC, White HE, Müller MC, et al. Standardized definitions of molecular response in chronic myeloid leukemia. *Leukemia*. 2012;26:2172-2175.
26. Cross NC, White HE, Colomer D, et al. Laboratory recommendations for scoring deep molecular responses following treatment for chronic myeloid leukemia. *Leukemia*. 2015;29:999-1003.
27. Pfirrmann M, Hochhaus A, Lauseker M, Saussele S, Hehlmann R, Hasford J. Recommendations to meet statistical challenges arising from endpoints beyond overall survival in clinical trials on chronic myeloid leukemia. *Leukemia*. 2011;25:1433-1438.
28. Gooley TA, Leisenring W, Crowley J, Storer BE. Estimation of failure probabilities in the presence of competing risks: new representations of old estimators. *Stat Med*. 1999;18:695–706.
29. Gray RJ. A class of k-sample tests for comparing the cumulative incidence of a competing risk. *Ann Stat*. 1988;16:1141-1154.
30. Cox DR. Regression Models and Life-Tables. *J Roy Statist Soc Ser B*. 1972;34:187-220.
31. Cortes J, Baccarani M, Guilhot F, et al. Phase III, randomized, open-label study of daily imatinib mesylate 400 mg versus 800 mg in patients with newly diagnosed, previously untreated chronic myeloid leukemia in chronic phase using molecular end points: tyrosine kinase inhibitor optimization and selectivity study. *J Clin Oncol*. 2010;28:424-430.
32. Hehlmann R, Lauseker M, Jung-Munkwitz S, et al. Tolerability-Adapted Imatinib 800 mg/d Versus 400 mg/d Versus 400 mg/d Plus Interferon- $\alpha$  in Newly Diagnosed Chronic Myeloid Leukemia. *J Clin Oncol*. 2010;29:1634-1642.
33. Preudhomme C, Guilhot J, Nicolini FE, et al. Imatinib plus Peginterferon Alfa-2A in Chronic Myeloid Leukemia. *N Engl J Med*. 2010;363:2511-2521.
34. Bocchia M, Wentworth PA, Southwood S, et al. Specific binding of leukemia oncogene fusion protein peptides to HLA class I molecules. *Blood*. 1995;85:2680-2684.

35. Bosch GJ, Joosten AM, Kessler JH, et al. Recognition of BCR-ABL positive leukemic blasts by human CD4<sup>+</sup> T cells elicited by primary in vitro immunization with a BCR-ABL breakpoint peptide. *Blood*. 1996;88:3522-3527.
36. Pinilla-Ibarz J, Korontsvit T, Zakhaleva V, et al. Synthetic peptide analogs derived from bcr/abl fusion proteins and the induction of heteroclitic human T-cell responses. *Haematologica*. 2005;90:1324-1332.
37. Brauer KM, Werth D, von Schwarzenberg K, et al. BCR-ABL activity is critical for the immunogenicity of chronic myeloid leukemia cells. *Cancer Res*. 2007;67:5489-5497.
38. Jain N, Reuben JM, Kantarjian H, et al. Synthetic Tumor-Specific Breakpoint Peptide Vaccine in Patients With Chronic Myeloid Leukemia and Minimal Residual Disease. *Cancer*. 2009;115:3924-3934.
39. Saglio G, Kim DW, Issaragrisil S, et al. Nilotinib versus imatinib for newly diagnosed chronic myeloid leukemia. *N Engl J Med*. 2010;362:2251-2259.
40. Hochhaus A, Saglio G, Hughes TP, et al. Long-term benefits and risks of frontline nilotinib vs imatinib for chronic myeloid leukemia in chronic phase: 5-year update of the randomized ENESTnd trial. *Leukemia*. 2016;30:1044-1054.
41. Kantarjian H, Shah NP, Hochhaus A, et al. Dasatinib versus imatinib in newly diagnosed chronic-phase chronic myeloid leukemia. *N Engl J Med*. 2010;362:2260-2270.
42. Cortes JE, Saglio G, Kantarjian HM, et al. Final 5-Year Study Results of DASISION: The Dasatinib Versus Imatinib Study in Treatment-Naïve Chronic Myeloid Leukemia Patients Trial. *J Clin Oncol*. 2016;34:2333-2340.
43. Castagnetti F, Gugliotta G, Breccia M, et al. Prognostic Value of BCR-ABL1 Transcript Type in Chronic Myeloid Leukemia Patients Treated Frontline with Nilotinib. *ASH Annual Meeting*. *Blood*. 2016: abstract 3070.
44. Romo CG, Kantarjian HM, Luthra R, et al. Response to Frontline Therapy with Second Generation Tyrosine Kinase Inhibitors in Chronic Myeloid Leukemia: Analysis of Outcome for b3a2 Vs. b2a2 Fusion Transcripts. *ASH Annual Meeting*. *Blood*. 2012;120:abstract 3781.

## FIGURE LEGENDS

**Figure 1. Time to response by transcript type.**

Estimates of (A) time to complete cytogenetic response, (B) time to major molecular response, and (C) time to deep molecular response ( $MR^{4.0}$ ), according to the fusion transcript type (patients included: 203 patients with e13a2 transcript and 290 patients with e14a2 transcript).

**Figure 2. Outcome by transcript type.**

Estimates of (A) overall survival, (B) progression-free survival, (C) failure-free survival, according to the fusion transcript type (patients included: 203 patients with e13a2 transcript and 290 patients with e14a2 transcript). The definitions of progression and failure are detailed in the methods section.

**Figure 3. Outcome by transcript type in patients treated with standard- or high-dose imatinib.**

Estimates of (A) overall survival, (B) progression-free survival, (C) failure-free survival, according to the fusion transcript type in patients receiving standard-dose imatinib (patients included: 163 patients with b2a2 transcript and 208 patients with b3a2 transcript). Estimates of (D) overall survival, (E) progression-free survival, (F) failure-free survival, according to the fusion transcript type in patients receiving high-dose imatinib (patients included: 40 patients with b2a2 transcript and 82 patients with b3a2 transcript; all patients treated with high-dose imatinib had intermediate or high Sokal score). The definitions of progression and failure are detailed in the methods section.

**Table I. Comparison of patient characteristics at diagnosis.**

Characteristic	e13a2 N = 203	e14a2 N = 290	P
Age, years; median (range)	52 (18-79)	52 (18-84)	0.374
Gender Male; N (%)	133 (66)	164 (57)	0.050
ECOG 2, N (%)	43 (21)	62 (21)	1.000
Hb level, g/dL; median (range)	12.0 (7.1 - 17.2)	12.3 (6.4 - 17.5)	0.413
PLT count, 10 <sup>3</sup> /μL; median (range)	293 (115 - 4920)	401 (101 - 2770)	0.251
WBC count, 10 <sup>3</sup> /μL; median (range)	61.6 (2.0 – 500.0)	52.2 (1.2 – 491.0)	0.174
Peripheral blasts, %; median (range)	1.0 (0 – 9.5)	1.0 (0 – 9.5)	0.397
Eosinophils, %; median (range)	1.8 (0 – 15.0)	2.0 (0 – 13.0)	0.009
Basophils, %; median (range)	2.0 (0 – 19.0)	2.0 (0 – 16.0)	0.259
Spleen, cm; median (range)	1 (0 - 24)	1 (0 - 22)	0.693
Sokal score, N (%):			
• Low	86 (42)	108 (37)	0.525
• Intermediate	74 (36)	110 (38)	
• High	43 (21)	72 (25)	
EURO score, N (%):			
• Low	90 (44)	124 (43)	0.322
• Intermediate	101 (50)	142 (49)	
• High	12 (6)	24 (8)	
EUTOS score, N (%):			
• Low	188 (93)	267 (92)	0.662
• High	15 (7)	23 (8)	
CCA Ph+ present, N (%)	7 (3)	9 (3)	1.000
Variant translocation present, N (%)	14 (7)	13 (4)	0.315
Derivative 9 deletions present, N (%)	27 (13)	27 (9)	0.188
Imatinib dose, N (%):			
• 400 mg	163 (80)	208 (72)	0.034
• 800 mg	40 (20)	82 (28)	

List of abbreviations:

ECOG: performance status according to the Eastern Co-operative Oncology Group (all enrolled patients were required to have ECOG performance status 0-2 at baseline); Hb: hemoglobin; PLT: platelet; WBC: white blood cells; EUTOS: European Treatment and Outcome Study; CCA Ph+: clonal chromosome abnormalities in Ph+ cells.

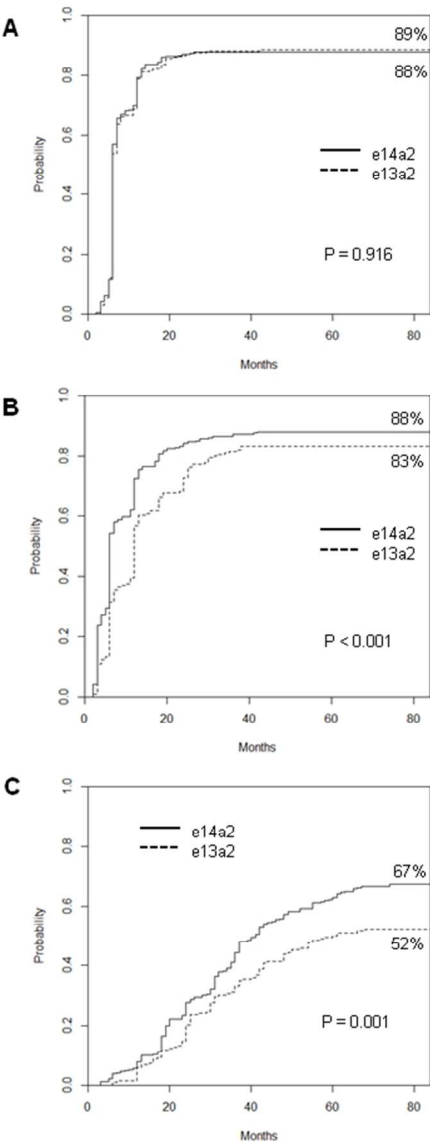


Figure 1. Time to response by transcript type. Estimates of (A) time to complete cytogenetic response, (B) time to major molecular response, and (C) time to deep molecular response (MR4.0), according to the fusion transcript type (patients included: 203 patients with e13a2 transcript and 290 patients with e14a2 transcript).

190x254mm (96 x 96 DPI)

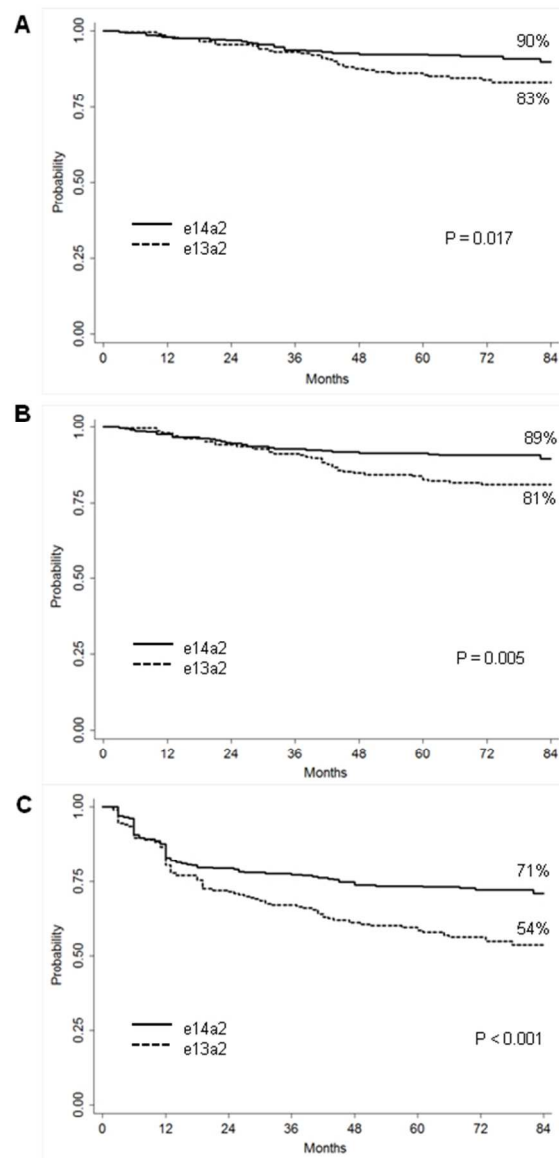


Figure 2. Outcome by transcript type.

Estimates of (A) overall survival, (B) progression-free survival, (C) failure-free survival, according to the fusion transcript type (patients included: 203 patients with e13a2 transcript and 290 patients with e14a2 transcript). The definitions of progression and failure are detailed in the methods section.

190x254mm (96 x 96 DPI)

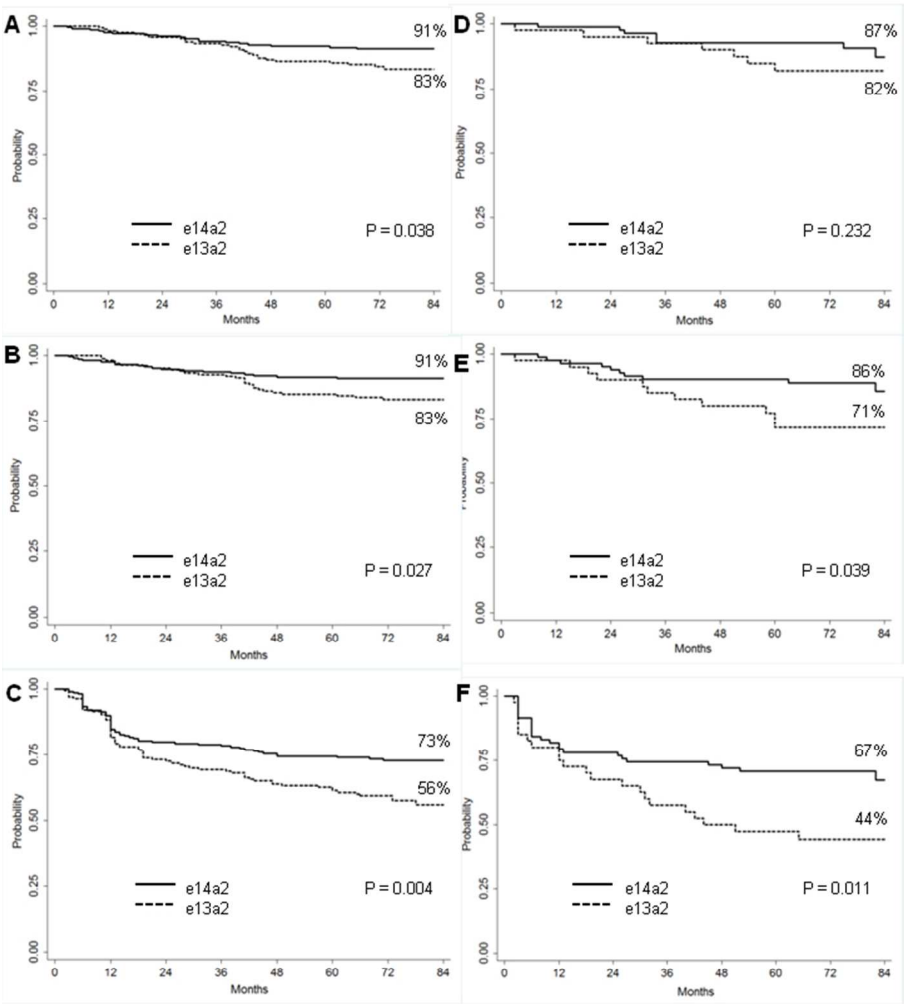


Figure 3. Outcome by transcript type in patients treated with standard- or high-dose imatinib. Estimates of (A) overall survival, (B) progression-free survival, (C) failure-free survival, according to the fusion transcript type in patients receiving standard-dose imatinib (patients included: 163 patients with b2a2 transcript and 208 patients with b3a2 transcript). Estimates of (D) overall survival, (E) progression-free survival, (F) failure-free survival, according to the fusion transcript type in patients receiving high-dose imatinib (patients included: 40 patients with b2a2 transcript and 82 patients with b3a2 transcript; all patients treated with high-dose imatinib had intermediate or high Sokal score). The definitions of progression and failure are detailed in the methods section.

190x254mm (96 x 96 DPI)