



Age, seasonality, and correlates of aggression in female Apennine chamois

This is the peer reviewed version of the following article:

Original:

Fattorini, N., Lovari, S., Brunetti, C., Baruzzi, C., Cotza, A., Macchi, E., et al. (2018). Age, seasonality, and correlates of aggression in female Apennine chamois. BEHAVIORAL ECOLOGY AND SOCIOBIOLOGY, 72(10), 1-17 [10.1007/s00265-018-2584-5].

Availability:

This version is available <http://hdl.handle.net/11365/1063724> since 2021-04-05T09:40:19Z

Published:

DOI:10.1007/s00265-018-2584-5

Terms of use:


Open Access

The terms and conditions for the reuse of this version of the manuscript are specified in the publishing policy. Works made available under a Creative Commons license can be used according to the terms and conditions of said license.

For all terms of use and more information see the publisher's website.

(Article begins on next page)

Age, seasonality, and correlates of aggression in female Apennine chamois

Niccolò Fattorini¹ & Sandro Lovari^{1,2}  Claudia Brunetti¹ & Carolina Baruzzi¹ & Antonella Cotza¹ & Elisabetta Macchi³ & Maria Chiara Pagliarella⁴ & Francesco Ferretti¹

* Sandro Lovari sandro.lovari@gmail.com

¹ Department of Life Sciences, University of Siena, Via P.A. Mattioli 4, 53100 Siena, Italy

² Maremma Natural History Museum, Strada Corsini 5, 58100 Grosseto, Italy

³ Department of Veterinary Sciences, University of Torino, Largo P. Braccini 2, 10095 Grugliasco (TO), Italy

⁴ Department of Bioscience and Territory, University of Molise, Via F. De Sanctis, 86100 Campobasso, Italy

Abstract

Intrinsic and environmental stressors, such as age and seasonality, may influence social behavior and endocrine levels in gregarious foragers, but little is known about how season and age affect both behavioral and physiological responses. We evaluated seasonal/age variation of aggression and vigilance, and seasonal/age variation of endocrine levels (fecal cortisol and testosterone metabolites), in a gregarious herbivore, the Apennine chamois *Rupicapra pyrenaica ornata*. We examined a period of decreasing resource abundance and maternal care from July to October, a key period for nursing, weaning, and early growth of offspring. Aggression rate, vigilance, and cortisol levels decreased throughout July–October, while aggression intensity showed the reverse. Aggression intensity peaked when chamois were on the most nutritious vegetation patches. Dominance increased with age, and prime-aged females (4–8 years old) showed higher cortisol and testosterone levels and were involved in aggressive interactions more often than subadult or older females. Our findings suggest that, in early summer, when nursing effort is the greatest, selection of nutritious food patches leads to frequent encounters between female chamois, enhancing aggression rate, vigilance, and endogenous stress response. The progressive decrease in food abundance throughout July–October triggers competition for scarce resources and increased intensity of aggression. Most likely, the energetic demands of lactation and offspring guarding were key determinants of behavioral and physiological stress of female chamois. Our results suggest a multi-factorial compromise between reproductive state and stress levels, in a group-living species.

Significance statement

The cost of motherhood: in female chamois, aggression, vigilance, and stress peak during lactation, despite abundant food resources. In females, aggression and dominance increase with age. A multi-factorial compromise between reproductive stage and stress may be necessary in a group-living animal. We suggest that motherhood is a stressful event for female chamois.

Keywords Aggression · Vigilance · Stress · Cortisol · Testosterone · Social dominance

Communicated by K. E. Ruckstuhl

Electronic supplementary material The online version of this article (<https://doi.org/10.1007/s00265-018-2584-5>) contains supplementary material, which is available to authorized users.

Introduction

The investigation of proximate physiological processes underlying behavior may help to understand its evolution, because those processes may affect the relative fitness of individuals (Bonier et al. 2009; Boonstra 2013). In gregarious species, competition may involve a trade-off with safety (fish: Hoare et al. 2004; birds: Caraco 1979; mammals: Molvar and Bowyer 1994), and agonistic interactions between individuals are frequent. Various agonistic interactions, ranging from ritualized dominance displays to aggressive threats, are involved in establishing dominance, which, in turn, allows reducing dangerous fighting (Rowell 1974; Gauthereaux 1978; Syme and Syme 1979). In gregarious foragers, aggression is also driven by competition for food, reflecting feeding interference (fish: Noël et al. 2005; birds: Goldberg et al. 2001; mammals: Monaghan and Metcalfe 1985). An endogenous response to stress could be related to intraspecific aggression (DeVries et al. 2003), with a transient acute stress response related to aggressive events (Soma et al. 2000; Clement et al. 2005). Conversely, the long-term effects of competition (e.g., Krebs et al. 2001; but see Le Saout et al. 2016), social density/crowding (e.g., Viblanc et al. 2014; but see Michelena et al. 2012) and establishment of dominance relations (e.g., Sapolsky 1983; but see Taillon and Côté 2008) can lead to a chronic increase of basal stress levels.

Aggressive behavior may also interfere with group dynamics, by increasing vigilance to avoid attacks by conspecifics (Treyes 2000; Favreau et al. 2010, 2018). Hence, although vigilance is mainly an antipredator behavior (Lima 1987; Frid 1997), it is also expected to reflect individual responses to social stressors such as the presence or rank of competitors

(Beauchamp 2015a). If so, vigilance may reflect endogenous stress (Michelena et al. 2012; Voellmy et al. 2014; but see Thierry et al. 2014).

In vertebrates, a number of studies have related adrenocortical activity to stress (Romero 2002, for a review) and have emphasized the role of androgens in promoting aggressive behavior (Adkins-Regan 1981, for a review). Patterns of endocrine levels are species-specific (Adkins-Regan 1981; Reeder and Krämer 2005; Keay et al. 2006) and vary greatly according to endogenous and environmental factors (e.g., Finch and Rose 1995; Wingfield et al. 1997; Romero 2002; Millsbaugh and Washburn 2004; Wingfield 2005; Keay et al. 2006). Short-term production of glucocorticoids and androgens is adaptive, because it mediates behavioral adjustments to the environment (Wingfield et al. 1998), whereas the effect of a prolonged increase of endocrine levels remains uncertain. A long-term increase of glucocorticoids/androgens may underlie chronic stress and/or immunosuppression, potentially reducing survival and reproductive success (Folstad and Karter 1992; Sapolsky 1992; Möstl and Palme 2002; Bonier et al. 2009). Alternatively, chronic stress may also underlie adaptive mechanisms (Boonstra 2013). Studies considering both hormonal and behavioral responses to environmental determinants could increase our understanding of their effects on animal populations.

In temperate ecosystems, seasonality is a major determinant of variation in social behavior and activity of individuals, because it affects availability of resources (e.g., Albon and Langvatn 1992). As competitive interactions between individuals are influenced by resource abundance (Sirot 2000), aggression and vigilance should also vary seasonally (Stokes 1962; Taillon and Côté 2007; Favreau et al. 2018). In addition, endocrine levels can be driven by seasonal mechanisms/events such as food availability (Kitaysky et al. 1999) or reproduction (Pavitt et al. 2015, 2016).

Aspects of social behavior such as aggression and vigilance, and their endocrine correlates, are also expected to change according to age and/or social status of individuals (DeVries et al. 2003; Reeder and Krämer 2005; Bartoš et al. 2010; Beauchamp 2015b). Among various taxa, dominance is positively correlated with both age and androgen level (fish: Taves et al. 2009; birds: Searcy and Wingfield 1980; mammals: Pelletier et al. 2003; but see also Wingfield et al. 1990, for the challenge hypothesis). It is unclear, however, how social rank affects the response to stress: glucocorticoid secretion can be higher either in subordinate individuals or in dominant ones (reviews: Creel 2001; Goyman and Wingfield 2004; Koolhaas et al. 2011).

The assessment of endocrine and behavioral responses to both intrinsic and environmental stressors such as age and seasonality should increase our understanding of adaptations of wild species, especially those living in highly seasonal ecosystems. Yet, few studies have examined both behavior and physiology in wild animal populations.

We evaluated how season and age affected key aspects of social behavior and endocrine levels in a mountain-dwelling herbivore, the Apennine chamois *Rupicapra pyrenaica ornata*, in the central Apennines (Italy). In these strongly seasonal mountainous environments, cold and snow cover limit the availability of food for herbivores during the long winter. High-quality forage is only available during the short 3–4-month green-up season and usually decreases from summer to autumn (Pettorelli et al. 2007; Villamuelas et al. 2016). In summer, access to high-quality food is essential, especially for juveniles that have to grow and store fat reserves for winter survival (Festa-Bianchet 1988; Lenihan and Van Vuren 1996; Côté and Festa-Bianchet 2001a; Pettolelli et al. 2007). Lactation creates a significant energy cost for adult females, who also have to recover from gestation (Gittleman and Thompson 1988; Therrien et al. 2007). The best food resources for Apennine chamois are vegetation patches dominated by *Trifolium thalii* and other forbs (Ferrari et al. 1988; Ferretti et al. 2015). Depletion of these patches can reduce offspring survival (Lovari et al. 2014; Ferretti et al. 2015), with negative effects on population dynamics (Ferretti et al. 2015; Scornavacca et al. 2016). The phenology of forbs in the high grasslands of the Apennines shows the typical seasonal trend of vegetation growth in temperate habitats: pasture quality increases from the green-up after snow melt, in late May–early June, to a peak in July, and then decreases from late August to autumn/early winter (Ferrari et al. 1988; Primi et al. 2016). Accordingly, maternal care by female chamois peaks in early summer and decreases with approaching autumn (Scornavacca et al. 2016, 2018; see also Ruckstuhl and Ingold 1994, for Northern chamois *R. rupicapra*).

To assess the effects of seasonality and age, we examined intraspecific aggression and vigilance behavior of female chamois throughout summer–autumn, during the temporal decrease of resource abundance and nursing effort, and in relation to age. To evaluate seasonal/age variation of proximate determinants of behavior, we also determined levels of fecal cortisol and fecal testosterone metabolites of females, as physiological indicators related to basal stress levels (Zwijacz-Kozica et al. 2013; Corlatti et al. 2014) and, possibly, to aggressiveness (Corlatti et al. 2012).

The seasonal decrease in quantity and quality of food could be the major determinant of social behavior and of endocrine correlates in female chamois. As competitive interactions between individuals are expected to increase when resources are limited (Sirot 2000), intraspecific aggression could increase from summer through autumn, leading to greater vigilance and higher endocrine levels (hypothesis 1). If so, we predicted that, from July to October, chamois would show the following: (1a) an increasing rate and intensity of aggressive interactions among females; (1b) an increasing rate and duration of vigilance behavior; (1c) increasing levels of fecal testosterone and cortisol metabolites. Alternatively, the seasonal decrease in nursing behavior could be the major driver of behavior and endocrine levels in females (Pavitt et al. 2016). As females should maximize access to resource because of high energetic demands of lactation, feeding interference could decrease from summer through autumn (hypothesis 2). If so, we predicted that, from July to October, chamois would show the following: (2a) a decreasing rate and intensity of aggressive interactions between females; (2b) a decreasing rate and duration of vigilance

behavior; (2c) decreasing levels of fecal testosterone and cortisol metabolites.

Social behavior and endocrine correlates are also expected to be influenced by social rank, which increases with age in female chamois (Lovari and Rosta 1985; Locati and Lovari 1991), leading to two sets of alternative predictions (Bstress of dominants[^] versus Bstress of subordinates[^] hypotheses; Creel 2001). Dominant, adult females, could afford potentially costlier aggression rather than ritualized patterns (Lovari 1985), to assert or reinforce their rank (Eccles and Shackleton 1986; Lovari et al. 2015), as well as higher androgen levels (Searcy and Wingfield 1980; Pelletier et al. 2003). They could also increase vigilance to monitor potential competitors, because of increased aggression to maintain their status (Hall 1960; Stahl et al. 2001). In turn, they could tolerate the greatest endogenous stress, revealing the cost of dominance (hypothesis 3; Creel 2001). If so, we predicted that adult female chamois would show the following: (3a) the greatest use of direct forms of aggression, i.e., threats; (3b) the greatest rate and duration of vigilance; (3c) the highest fecal testosterone and fecal cortisol levels. Alternatively, dominant, adult females could show lower androgen levels (Wingfield et al. 1990; Taillon and Côté 2008) and/or lower aggressiveness

(Fairbanks 1994; Côté 2000) than subadult, lower-ranking females. However, displacements by dominant individuals could lead to increased vigilance (Keverne et al. 1978; Waite 1987) and endogenous stress for subadults, thus revealing costs of subordination (hypothesis 4; Creel 2001). If so, we predicted that adult female chamois would show the following: (4a) the lowest use of direct forms of aggression, i.e., threats; (4b) the lowest rate and duration of vigilance; (4c) the lowest fecal testosterone and fecal cortisol levels.

Methods

Study area and population

Our study was conducted in alpine meadows of Mt. Meta (c. 30 ha, c. 2100–2242 m asl), in the Abruzzo, Lazio and Molise National Park (ALMNP; Central Apennines, Italy), throughout July–October 2014 and 2015. This area lies in the temperate oceanic bioclimate, lower orotemperate thermotype, and lower/upper humid ombrotype (Pesaresi et al. 2014). There is no dry season and snow cover usually lasts from late November to May–June (Bruno and Lovari 1989). Vegetation cover includes forb-dominated patches (c. 24%, e.g., *Trifolium* spp. and *Anthyllis vulneraria*), palatable graminoids (c. 39%, mainly *Festuca* spp.), unpalatable graminoids (c. 1%, *Brachypodium genuense*), and rocks/screes with sparse vegetation (c. 36%) (Ferretti et al. 2015).

Female chamois give birth in May (Lovari 1977). Mixed group of chamois with adult females, yearlings, and juveniles graze on alpine meadows from late spring–early summer (after parturition and snowmelt) to late autumn–early winter (Lovari and Cosentino 1986; Bruno and Lovari 1989). Nursing lasts until October, at least (Scornavacca et al. 2016, 2018). Male chamois are solitary outside the rut, mainly living in forests, at lower altitudes (Lovari and Cosentino 1986). Previous observations reported that only 4–5 solitary males inhabited our study area in 1970s–1980s, with no mixed groups of chamois (SL, personal observations). Nowadays, a substantial chamois herd is present (Ferretti et al. 2015). For groups of females, yearlings, and juveniles, the maximum number of individuals observed at the same time was 69 and 78 in 2014 and 2015, respectively.

Red deer *Cervus elaphus* occasionally move through the area, but overlap little with the chamois altitudinal range (Ferretti et al. 2015). Potential predators in our study area are gray wolf *Canis lupus*, brown bear *Ursus arctos*, and golden eagle *Aquila chrysaetos* (which may prey on juveniles), although predation on chamois is negligible (Patalano and Lovari 1993; Ciucci et al. 2014; Scornavacca and Brunetti 2015; Baruzzi et al. 2017). For further details of our study area, see Ferretti et al. (2015).

Behavioral data

Behavioral observations were conducted from July through October, in 2014 and 2015, from dawn to dusk (05:00–20:00). We performed c. 7 h of observations/day, for at least 7 days/month. We attempted to balance behavioral sampling across months (July: 63 h, August: 62 h, September: 50 h, October: 51 h) and across periods of the day (dawn to midday: 120 h, midday to dusk: 96 h). Chamois were observed using binoculars (Nikon 10x30, Zeiss 15x70) or spotting scopes (Nikon 20-60x), at distances of at least 200 m, depending on terrain and range of vision. In our study area, chamois were habituated and could be approached to within a few meters without moving away from the observer or showing alert behavior (staring in the direction of the observer or orientating their ears to him/her, or raising the tail; Lovari 1985). We avoided recording data whenever we felt that the animals were reacting to our presence (cf. Winnie Jr and Creel 2007). It was not possible to record data blind because our study involved focal animals in the field.

Intraspecific aggression

Aggressive interactions among females (≥ 2 years old) were assessed through continuous focal-group sampling (Altmann 1974) by 2–3 observers, on foraging groups of females, yearlings, and juveniles. Among group-living species, aggressive interactions should be relatively rare events within the overall time budget (e.g., birds: Caraco 1979; mammals: Molvar and Bowyer 1994). Dawkins (2007, p. 93) suggests longer sampling bouts to record infrequent events. Thus, we observed each focal group for at least 30 min, depending on group movements and visibility. Whenever possible, when the group did not split, we continued observing the focal group up to a maximum of *c.* 6 h. During focal-group observations, we recorded group size/structure (number of adult and subadult females; number of yearling; number of juveniles; number of males) and number of foraging females (percentage of active females) every 5 min (sampling periods), through instantaneous scan sampling (Altmann 1974). We considered a group as at least two animals staying in sight and less than 40 m apart from each other at the time of observation[^] (e.g., Krämer 1969; Bruno and Lovari 1989). We recorded all occurrences of interactions between females during each 5-min sampling interval, in a portable dictaphone. For each aggression event, we also recorded date and time (hh:mm), behavior patterns used by each individual during the interaction, age class of dominant and subordinate chamois, type of interaction (see below), and the type of vegetation (forbs; palatable graminoids; sparse vegetation on cliff/scree) where the interaction occurred. Four age classes were assessed according to Lovari (1985) by estimating the ratio between horn height and ear length (subadult, i.e., 2–3 years old; 4–5 years old; 6–8 years old; ≥ 9 years old). This procedure has been validated on individuals of known age (Lovari 1985). The dominant individual was defined as the female who performed the last dominance pattern and/or did not withdraw (Locati and Lovari 1991; Corlatti et al. 2012). Conversely, the subordinate was considered as the female who escaped and/or responded with a submissive pattern (Locati and Lovari 1991; Corlatti et al. 2012). As the aggressor was not always dominant, we also recorded who initiated the interaction. The type of interaction was defined as a single aggression (a dominance pattern followed by an immediate submission/escape by the opponent), or sequence (a series of consecutive dominance behavior patterns performed by both opponents). The latter case implied that the attacked individual reacted to the aggressor; thus, we considered it as an escalation. Dominance and submissive behavior patterns performed by female chamois were recorded following Lovari (1985). Dominance patterns include both indirect and direct forms of aggression to intimidate/displace rivals (Lovari 1985). Indirect forms involve visual dominance postures (Lovari 1985). Direct threats such as approaches/chases are the least ritualized and may include attempts at physical contact, although this is rare (Locati and Lovari 1990). Submissive patterns include withdrawal and several ritualized, subordinate postures, e.g., low stretch and reactive urination (Lovari 1985). We did not record vocal-based patterns because of the complexity in their detection and interpretation (Lovari 1985). Dominance behavior patterns performed by female chamois were divided into direct and indirect forms of aggression (hereafter *threats* and *displays*, respectively; e.g., Schaller 1977; Walther 1974), to evaluate the intensity of interactions. Threats were considered more aggressive than displays (Walther 1974; Schaller 1977; Lovari et al. 2015; in Apennine chamois: Lovari 1985).

Vigilance behavior

Vigilance behavior of foraging females was assessed by continuous focal-animal sampling (Altmann 1974), by 2–3 observers. As vigilance events are more frequent than agonistic events (e.g., birds: Caraco 1979; mammals: Molvar and Bowyer 1994), we used shorter sampling periods to record them (Dawkins 2007, p. 93). Observations were conducted in 10-min bouts (e.g., Favreau et al. 2018), and each bout was divided into 1-min sampling intervals, to record variation of group size/structure. Group size and structure (number of adult and subadult females; number of yearlings; number of juveniles; number of males) as well as distance to the nearest cliff (i.e., distance from escape terrain, to account for predation risk: 0–25 m; 25–75 m; > 75 m) were assessed by instantaneous scan sampling (Altmann 1974). We recorded the number of head lifts performed by a female chamois during each 1-min sampling interval. We considered a head lift when a female interrupted grazing and raised her head above her

shoulders while scanning (e.g., Lipetz and Bekoff 1982). For each head lift, we recorded date, time (hh:mm), duration (seconds), and type (*chewing*: the individual keeps on chewing while scanning; *no chewing*: the individual does not chew while scanning; *indeterminate*: we could not see the mouth of the individual). Chewing was used to evaluate the cost of vigilance: head lifts where individuals did not keep on chewing are expected to interfere with foraging processes more than those where chewing continues (e.g., Underwood 1982; Fortin et al. 2004; McDougall and Ruckstuhl 2018). We avoided recording vigilance behavior on the same individual in the same day: whenever possible, we observed chamois that could be distinguished by their respective positions on the slope (Frid 1997), while another observer helped to follow those who had already been sampled. Morphological details (horn patterns, e.g., broken horns; coat/color features, e.g., scars/spots; Lovari and Rolando 2004, p. 78), visible at close range, helped to further decrease the probability of recording data from the same individual repeatedly in the same day (Ferretti et al. 2014, 2015; Lovari et al. 2014).

Endocrine data

The assessment of fecal hormone metabolites can provide unbiased results as it does not involve stressing the animal (Millspaugh and Washburn 2004; Sheriff et al. 2011). Furthermore, this non-invasive tool provides information on long-

term hormonal levels of wild species (Millsbaugh and Washburn 2004; Sheriff et al. 2010).

We collected fresh fecal samples from subadult and adult female chamois to measure the concentrations of fecal androgen (FAMs) and cortisol (FCMs) metabolites as hormonal indicators of aggressiveness and stress, respectively (cf. Southern chamois: Dalmau et al. 2007; Northern chamois: Corlatti et al. 2012, 2014; Zwijacz-Kozica et al. 2013; Hadinger et al. 2015). Fresh fecal samples were collected from July to October 2015, immediately after we observed defecation. We stored samples in a portable freezer box, which prevented changes because of air temperature and immunoreaction of metabolites (Möstl et al. 1999). We recorded date, time (hh:mm), and age class of female chamois. Fecal samples were frozen at -20°C as soon as back from the field, no later than 10 h from collection (Corlatti et al. 2012, 2014; Ezenwa et al. 2012). We tried to balance fecal sample collection by month, time of day, and chamois age class. We avoided collecting samples from the same individual in the same day (see above). However, anonymized sampling of feces should still provide robust estimates of endocrine levels of chamois, especially during the non-mating season (Corlatti 2018, for Northern chamois).

Extraction and determination of fecal steroids were conducted as previously reported by Pecorella et al. (2016), for fallow deer *Dama dama*. FCMs and FAMs were determined respectively using a multi-species cortisol enzyme immunoassay kit (K003; Arbor Assays, Ann Arbor, MI) and a multi-species testosterone enzyme immunoassay kit (K032; Arbor Assays, Ann Arbor, MI) both designed to quantitatively measure cortisol and testosterone in dried fecal extracts.

Inter- and intra-assay coefficients of variation were 11.7% and 9.9%, respectively. The FCMs and FAMs test sensitivities were determined by measuring the least amount of hormone standard consistently distinguishable from the zero concentration of standard and were calculated to be 17.3 ng/g feces and 9.92 pg/g feces respectively. The mean recovery rates of cortisol and testosterone added to dried feces were 96.7% and 107.6% respectively ($N = 8$). All fecal samples were analyzed at multiple dilutions (1:4, 1:8, 1:16, and 1:32) and all regression slopes were parallel to the standard curve ($r^2 = 0.985$). According to the manufacturer, the cortisol antibody used to quantify FCM cross reacts 100% with cortisol, 18.8% with dexamethasone, 7.8% with prednisolone, 1.2% with corticosterone, and 1.2% with cortisone. The testosterone antibody cross reacts 100% with testosterone, 56.8% with 5 α -dihydrotestosterone, and 0.27% with androstenedione.

Statistical analyses

We discarded focal-group bouts that lasted less than 15 min from the analysis of aggressive interactions and focal-animal bouts that lasted less than 5 min from the analysis of vigilance. A short bout occurred when the focal group/individual moved away from our sight, or when poor weather limited our range of vision. Overall, we analyzed 77 focal-group bouts to assess female-female aggression (mean \pm SE: 2.4 ± 0.2 h of observation/group), 316 focal-animal bouts to assess female vigilance (mean \pm SE: 8.1 ± 0.1 min of observation/individual), and 76 fecal samples to assess endocrine correlates.

We investigated seasonal/age variation of female chamois social behavior (aggression, vigilance) and hormone levels through generalized linear models and generalized linear mixed models (GLMs and GLMMs, respectively; Bolker et al. 2009). Statistical analyses were conducted according to the information-theoretic approach (Burnham and Anderson 2002), by evaluating multiple competing a priori hypotheses, for each indicator. Beside seasonality and age, previous studies identified further influencing factors of aggression, vigilance, and hormone levels (Table S1). We could not discard, in advance, any combination of these variables, because all the relevant hypotheses could be biologically meaningful. We performed a model selection to rank all possible models, as each of them could represent a different plausible a priori hypothesis. We modeled nine response variables separately: three indicators concerning

aggression, four indicators concerning vigilance, and two endocrine indicators (Table S2). For each indicator, the relevant global model included some biologically meaningful fixed effects, which could influence the response variable (Table S2).

We expected that female social behavior and endocrine correlates would be affected by the decreasing gradient of food availability and/or investment in maternal care through summer–autumn, which decrease linearly from July through October (food availability: Ferrari et al. 1988; maternal care: Scornavacca et al. 2016, 2018). A preliminary explorative analysis did not support quadratic variations of our response variables through summer–autumn. In turn, to evaluate the role of seasonality, we included the linear effect of Julian day (i.e., the no. of days elapsed from the first of January) as numeric predictor. The effect of age on aggression, vigilance, and hormones was assessed by including age class as categorical predictor (reference category: subadult, i.e., 2–3 years old). The use of actual age as a continuous variable would have been a better predictor than age class, but we used age class to further reduce the probability of a mistake in age assessment.

As feeding interference is influenced by number (Sirot 2000) and activity (Kortet and Hedrick 2007) of competitors, we considered the number of females in a group and the percentage of active females as numeric predictors of aggression rate. The intensity and outcome of aggression between two opponents can vary with both the type of aggression event (e.g., whether the fight is escalated: e.g., Clutton-Brock et al. 1979) and the resource value (e.g., food quality: Sirot 2000). Consequently, models to assess the intensity/outcome of an aggression also included the aggression type (reference category: sequence) and the vegetation patch where female chamois interacted (reference category: graminoids) as categorical

predictors.

Vigilance is affected by predation risk (Lima 1987; Frid 1997) and mountain ungulates use rocky cliffs/ridges to escape from predators (cf. Baruzzi et al. 2017, for Apennine chamois). Vigilance also varies greatly according to group size (Beauchamp 2008). Therefore, models on vigilance behavior included distance to the nearest cliff (Frid 1997) as categorical predictor (reference category: 25–75 m), and group size as numeric predictor.

Daily activity rhythms of herbivores are bimodal, peaking at dusk/dawn (in *Rupicapra* spp.: Bruno and Lovari 1989; Rüttimann et al. 2008; Darmon et al. 2014; Mason et al. 2014; Brivio et al. 2016; Carnevali et al. 2016; but see Šprem et al. 2015, for forest-dwelling chamois). In addition, potential ecological drivers such as predation risk could vary over the day and further influence behavior. Hormone levels also show circadian rhythms (Breuner et al. 1999; Romero and Ramage-Healey 2000; Touma et al. 2003; Millspaugh and Washburn 2004; Reeder and Krämer 2005). In turn, to account for bimodal daily variation of behavioral/endocrine indicators, all global models included both linear and quadratic effects of time of day as numeric predictors. Time of day (hh:mm) was included as hours from midnight. For all the behavioral indicators, as they were recorded in two sampling years, we included year as a categorical predictor (reference category: year 2014), to account for potential inter-annual differences.

When required by the recording procedure, random effects were included. In models of aggression rate, we treated the focal group of chamois as a random intercept, to account for repeated observations conducted on the same group and potential unbalanced sampling among groups (van de Pol and Wright 2009, p. 794). In models concerning the outcome and the intensity of aggressions between female chamois, as both response variables were recorded as repeated measures on the same aggressive event, we treated each event as a random intercept. In models on vigilance behavior, we considered the focal female chamois as a random intercept, to account for repeated observations conducted on the same individual.

Numeric predictors were standardized according to Gelman (2008), to compare effect size of predictors (i.e., their relative importance). Multicollinearity among predictors was tested for each full model by calculating the variance inflation factor (VIF) for all predictors. All VIF values were < 2 , indicating no multicollinearity between the explanatory variables (Zuur et al. 2009). VIFs were calculated through the R package *car* (Fox and Weisberg 2011).

Model selection was performed following the minimum Akaike's information criterion, corrected for small samples (AICc: Burnham and Anderson 2002). For each response variable, all alternative models, each one representing a plausible, a priori hypothesis, were ranked and weighted from the global model (Table S2). Despite the large number of models evaluated (sensu Freedman and Pee 1989), the ratio between the number of variables and the number of observations was small (Table S2). Models with $\Delta\text{AICc} \geq 4$ of the best model, as well as models with an AICc value greater than that of any simpler, nested alternative, were not selected (Table S3).

For each response variable, standardized coefficients of predictors, standard errors, 95% confidence intervals, and variance of random effects were estimated for the top-ranked model (Table S3). The significance of predictors was assessed by checking whether 95% confidence intervals included 0. Model selection, GLMs, and GLMMs were performed through the R packages *MuMIn* (Bartoń 2012), *stats* (R Core Team 2013), *VGAM* (Yee 2015), and *glmmADMB* (Bolker et al. 2012).

Data availability

The datasets analyzed during the current study are available from the corresponding author on reasonable request.

Results

Intraspecific aggression

All the indices of aggressive behavior varied throughout the study period, although the effect of Julian day was smaller compared to other predictors (Table 1). Female-female aggression rate decreased over summer–autumn (Fig. 1a; Table 1a). Aggression rate increased with increasing number of females in the group, which had the greatest effect size, and with the proportion of active females (Table 1a). Time of day did not influence the frequency of aggression.

The proportion of threats increased over summer–autumn (Fig. 1b; Table 1b). Time of day had the greatest effect on the intensity of aggression: the probability to perform a threat peaked in the central part of the day. Vegetation type influenced aggression intensity: female chamois used more often threats when on patches of forbs rather than on palatable graminoids or cliffs with sparse vegetation (Table 1b). Threats were more likely to be performed in single aggression events, while displays were the most used when an opponent reacted to the attacking individual. Age class of the sender greatly influenced the intensity of aggression, but relative age of the recipient did not: subadult females sent threats as often as displays, whereas adult females performed more threats than subadults (Fig. 2a; Table 1b).

For an individual, the outcome of an aggression was only influenced by age class: the older the female, the greater the probability to win (Fig. 2b; Table 1c), which increased from individuals aged 2–3 and 4–5 years (c. 20% of won interactions, with no difference between these age classes) to those aged 6–8 years (c. 50%) and to ≥ 9 -year-old females (c. 80%). Age class affected the probability of being involved in aggressive interactions: females aged 6–8 years were observed in significantly more aggressions than expected from their relative occurrence in the population (Table S4a) and interacted more often than expected with females aged ≥ 8 years (Table S4b).

Vigilance behavior

All vigilance indicators but one were influenced by Julian day, but not by age class (Table 2). Head lift rate decreased from July through October (Fig. 1c; Table 2a) and did not differ among age classes (Fig. 2c; Table 2a). Time of day had the greatest effect on head lift rate, which peaked at crepuscular periods. The frequency of head lifts decreased as group size increased, and it was lower in 2015.

In the majority of cases (*c.* 90%; $N = 929$ head lifts), we could assess whether the female was chewing or not. The probability to stop chewing during scans decreased through- out July–October and was positively affected by group size. (Table 2b). Year of sampling had the greatest effect size on this indicator: the occurrence of non-chewing vigilance was great- er in 2015.

Table 1 Parameters estimated from the top-ranked models on aggres- sive behavior (β : standardized coefficient, SE: standard error; CI: confi- dence interval). Variance of random factors is also shown. Asterisks mark the confidence intervals which do not include 0. Effect of Julian day and age class, when present, is shown in italic. The reference categories of categorical predictors are: single aggression (for aggression type), 2– 3 years (for age class); graminoids (for vegetation patch)

Indicator	Predictor	β	SE	95% CI
(a) Aggression rate (focal group) variance=0.36770	Intercept	– 1.37896	0.09555	– 1.56623; – 1.19168 *
	<i>Julian day</i>	– <i>0.00031</i>	<i>0.00013</i>	– <i>0.00056</i> ; – <i>0.00005</i> *
	Time	0.28199	0.14516	– 0.00252; 0.56650
	No. females in group	0.01380	0.00205	0.00978; 0.01782 *
	% active females	0.00105	0.00013	0.00079; 0.00130 *
(b) Aggression intensity (aggression event) variance=0.00747	Intercept	0.65244	0.05117	0.55215; 0.75273 *
	<i>Julian day</i>	<i>0.00004</i>	<i>0.00001</i>	<i>0.00002</i> ; <i>0.00006</i> *
	Time	0.38675	0.18155	0.03091; 0.74259 *
	Time ²	– 0.39879	0.17847	– 0.74859; – 0.04899 *
	Aggression type (sequence)	– 0.11440	0.02058	– 0.15474; – 0.07406 *
	<i>Sender age class (4–5 years)</i>	<i>0.31203</i>	<i>0.05811</i>	<i>0.19813</i> ; <i>0.42592</i> *
	<i>Sender age class (6–8 years)</i>	<i>0.29726</i>	<i>0.05211</i>	<i>0.19512</i> ; <i>0.39939</i> *
	<i>Sender age class (≥ 9 years)</i>	<i>0.28351</i>	<i>0.05181</i>	<i>0.18196</i> ; <i>0.38506</i> *
	Vegetation patch (forbs)	0.04595	0.02259	0.00167; 0.09023 *
Vegetation patch (rocks)	– 0.00094	0.02751	– 0.05486; 0.05298 *	
(c) Aggression outcome (aggression event) variance <0.0000	Intercept	0.13881	0.03750	0.06531; 0.21231 *
	<i>Winner age class (4–5 years)</i>	<i>0.01028</i>	<i>0.04705</i>	– <i>0.08194</i> ; <i>0.10250</i>
	<i>Winner age class (6–8 years)</i>	<i>0.38450</i>	<i>0.04717</i>	<i>0.29204</i> ; <i>0.47695</i> *
	<i>Winner age class (≥ 9 years)</i>	<i>0.74041</i>	<i>0.04469</i>	<i>0.65282</i> ; <i>0.82800</i> *

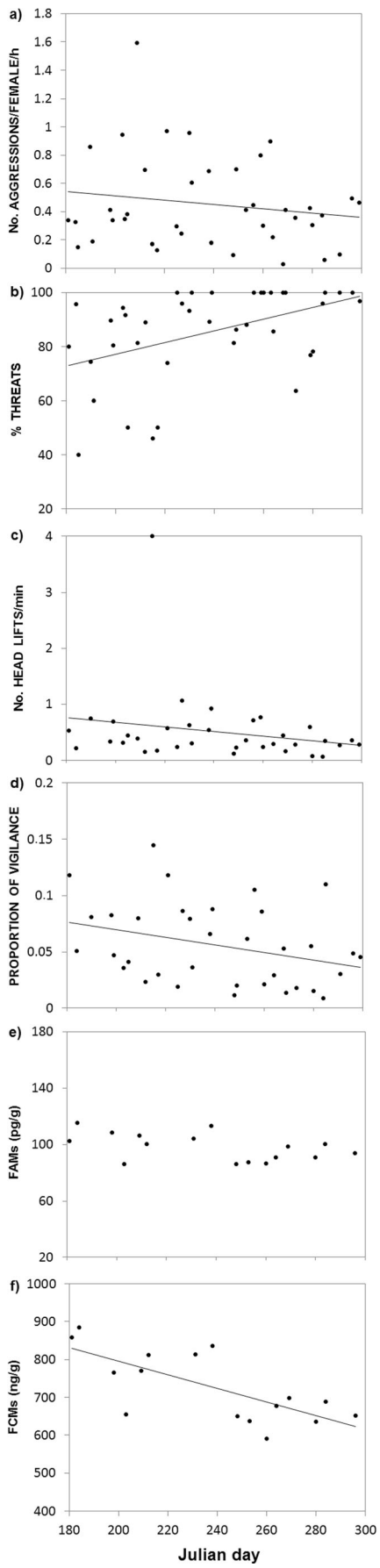


Fig. 1 Seasonal variation in daily a aggression rate between chamois, b proportion of threats performed by a female, c female vigilance rate, d proportion of time spent vigilant by a female, e female FAMs concentration, and f female FCMs concentration. A regression line was added when variation through Julian days was supported by GLMMs

The duration of head lifts did not vary with season (Table 2c). The proportion of costly head lifts performed in vigilance bouts had the greatest effect on this indicator: the greater the percentage of non-chewing head lifts, the greater the mean duration of vigilance. Group size did not influence this index, which peaked at dusk. The duration of head lifts was affected nonlinearly by distance from escape terrain: it did not vary between 0 and 75 m, but increased on grazing patches at least 75 m from the nearest cliff.

Time spent in vigilance decreased throughout summer–autumn (Fig. 1d; Table 2d) and did not differ between age classes (Fig. 2d; Table 2d). Time of day had the greatest effect on this indicator, which peaked at crepuscular periods and was lower in 2015.

Hormone levels

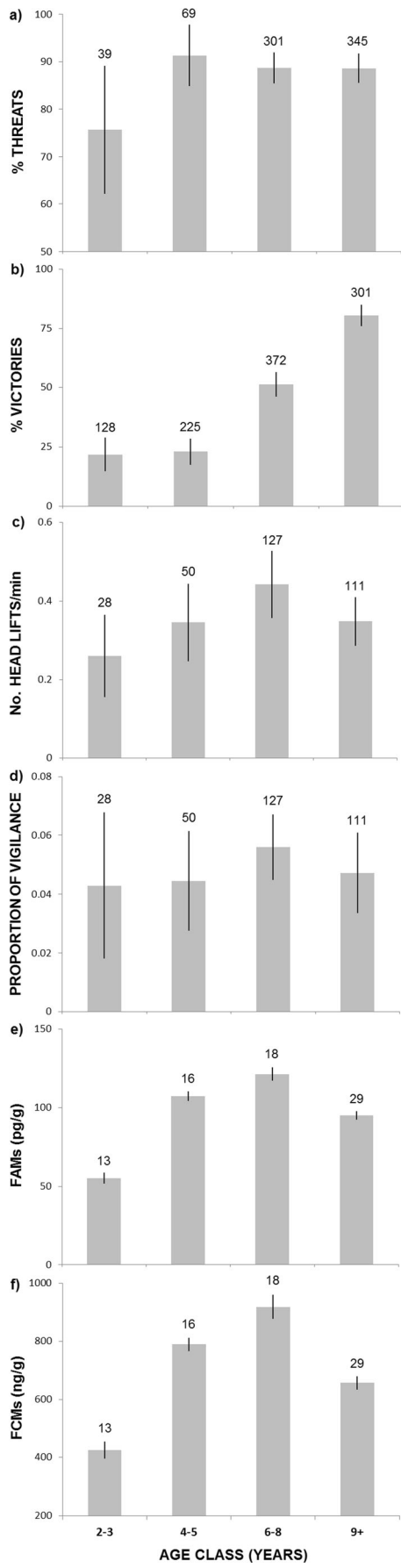
Levels of fecal androgen metabolites (FAMs) did not vary throughout the study period (Fig. 1e; Table 3a), whereas those of fecal cortisol metabolites (FCMs) decreased from July through October (Fig. 1f; Table 3b).

Age class showed the greatest effect size on fecal hormone metabolites (Table 3). Four-to-five and 6–8-year-old females showed both the highest FAMs and FCMs, whereas subadult and older females showed lower levels of both endocrine indices (Fig. 2e, f; Table 3). Time of day had no effect on fecal metabolites.

FAMs and FCMs measured on the same sample were positively correlated (Fig. 3; two-tailed t test: $N = 76$; $t = 14.885$; $df = 74$; $r = 0.86$; $p < 0.0001$).

Discussion

Our results show that social behavior of chamois and its endocrine correlates differed both throughout the summer–autumn progression and between age classes, although the effect size of seasonality and age depended on the indicator and varied according to other influencing factors. The frequency of aggression between grazing females mainly increased both with the number and activity of potential competitors, suggesting the occurrence of feeding interference over resources. In contrast to our prediction (1a), the rate of aggression between females decreased throughout summer–autumn, but intensity of aggression showed the opposite pattern (our prediction, 1a). Thus, aggressions were more frequent when both quality and quantity of resources were the highest (Ferrari et al. 1988; Ferretti et al. 2015), but females performed a greater proportion of threats than dominance displays, when resources became poorer. The best food resources for Apennine chamois include snowbed vegetation dominated by *Trifolium thalii* and other nutritious forbs, which grow in patches, on slightly acidic terrain with prolonged snow cover (Ferrari et al. 1988). Lactation peaks in summer (Scornavacca et al. 2016, 2018), which imposes heavy energetic demands upon females (Gross et al. 1995; Ruckstuhl et al. 2003; Froy et al. 2016; Pavitt et al. 2016). In summer, females select high-quality foraging sites (Ferrari et al. 1988), which may increase the probability of having to challenge a lactating conspecific over a rich food resource (Boness et al. 1982; McDonough 1994). Subordinate individuals could quickly withdraw to other nutritious patches, possibly explaining the lower occurrence of threats in summer than in autumn. Conversely, after nursing/weaning and before the winter rigors, females could escalate to direct forms of aggression over a scarcer resource, explaining the increase in aggression intensity throughout summer–autumn. Accordingly, Bruno and Lovari (1989) observed that female chamois increased the rate of steps caused by social displacements in autumn compared to summer, which may reflect a response to more intense aggressive interactions. These results suggest that investment in maternal care and seasonal variation of food availability may have contributed to shape different aspects of female aggressiveness, providing partial support to both our predictions (1a, 1b). Another explanation for the higher rate of aggression when food was more abundant might be that some vegetation patches were closer to anti-predator escape terrain such as cliffs, thus reducing predation risk. Aggression rate between females might have increased in summer, when newborns were more vulnerable, to access safer food patches (Kim et al. 2004).



f Fig. 2 Age-related variation of a proportion of victories in interactions between female chamois, b proportion of threats performed by a female, c female vigilance rate, d proportion of time spent vigilant by a female, e female FAMS concentration, and f female FCMS concentration. Error bars/numbers indicate the bootstrapped 95% confidence intervals and sample size, respectively

In contrast to our prediction (1b), vigilance behavior of female chamois decreased throughout summer–autumn. Among ungulates, vigilance is usually greater in females than in males, mainly as an antipredatory strategy to protect offspring (Lipetz and Bekoff 1982; Alados 1985; Ferretti et al. 2014). If so, females may have been particularly wary in summer because of the high vulnerability of newborns (Ruckstuhl and Ingold 1999, for Northern chamois), leading to a greater scanning rate than in autumn. The greater vigilance rate/effort showed by females in the crepuscular periods, as well as the greater probability to perform less intense aggression, may have resulted from the higher perception of predation risk as darkness approached. In fact, wolves are mainly nocturnal in our study area (Mancinelli et al. 2018). Predators may have also played a role in the observed inter-annual differences on vigilance behavior.

Table 2 Parameters estimated from the top-ranked models on vigilance behavior (β : standardized coefficient, SE: standard error; CI: confidence interval). For GLMMs, variance of random factors is also shown. Asterisks mark the confidence intervals which do not include 0. Effect of Julian day and age class, when present, is shown in italic. The reference categories of categorical predictors are: year 2014 (for year); 25–75 m (for cliff distance); 2–3 years (for age class)

Indicator	Predictor	β	SE	95% CI
(a) Vigilance rate (focal individual) variance=0.37180	Intercept	-0.82141	0.07765	-0.97360; -0.66922 *
	<i>Julian day</i>	-0.22624	0.10975	-0.44135; -0.01113 *
	Time	-2.01460	0.96854	-3.91294; -0.11626 *
	Time ²	2.17659	0.96144	0.29217; 4.06101 *
	Year (2015)	-0.73945	0.10298	-0.94129; -0.53761 *
	Group size	-0.29676	0.11164	-0.51557; -0.07794 *
(b) Vigilance cost (focal individual) variance=0.08195	Intercept	0.49810	0.15816	0.18811; 0.80809 *
	<i>Julian day</i>	-0.00194	0.00067	-0.00325; -0.00063 *
	Year (2015)	0.28000	0.04666	0.18855; 0.37145 *
	Group size	0.00432	0.00134	0.00169; 0.00695 *
(c) Vigilance duration	Intercept	1.89464	0.09645	1.70560; 2.08368 *
	<i>Julian day</i>	-0.22248	0.11550	-0.65854; 0.00390
	Time ²	0.33912	0.09394	0.15500; 0.52324 *
	Cliff distance (0–25 m)	0.15573	0.11838	-0.07629; 0.38775
	Cliff distance (> 75 m)	0.38416	0.14135	0.10711; 0.66121 *
	Group size	0.16205	0.10267	-0.03918; 0.36328
	% costly head lifts	0.53859	0.10023	0.34214; 0.73504 *
(d) Vigilance effort	Intercept	-2.69503	0.22418	-3.13442; -2.25564 *
	<i>Julian day</i>	-0.60598	0.13085	-0.86245; -0.34951 *
	Time	-2.96122	1.19209	-5.29772; -0.62472 *
	Time ²	3.39001	1.17750	1.08211; 5.69791 *
	Year (2015)	-0.85061	0.12486	-1.09533; -0.60588 *
	<i>Age class (4–5 years)</i>	0.38147	0.23898	-0.08693; 0.84987
	<i>Age class (6–8 years)</i>	0.06220	0.21350	-0.35626; 0.48066
	<i>Age class (\geq 9 years)</i>	-0.18405	0.21395	-0.60339; 0.23529

Table 3 Parameters estimated from the top-ranked models on hormone levels (β : standardized coefficient, SE: standard error; CI: confidence interval).

Asterisks mark the confidence intervals which do not include 0. Effect of Julian day and age class, when present, is shown in italic. The reference category for age class is 2–3 years

Indicator	Predictor	β	SE	95% CI
(a) FAMs (pg/g)	Intercept	55.46374	1.08423	53.33865; 57.58883 *
	Time	- 24.02011	13.87170	- 51.20864; 3.16842
	Time ²	26.60420	14.00297	- 0.84162; 54.05002
	<i>Age class (4–5 years)</i>	<i>51.31064</i>	<i>2.76611</i>	<i>45.88906; 56.73221 *</i>
	<i>Age class (6–8 years)</i>	<i>65.31186</i>	<i>3.09296</i>	<i>59.24966; 71.37406 *</i>
	<i>Age class (≥ 9 years)</i>	<i>40.14460</i>	<i>1.92932</i>	<i>36.36313; 43.92607 *</i>
(b) FCMs (ng/g)	Intercept	432.95764	18.02165	397.63521; 468.28007 *
	<i>Julian day</i>	<i>- 30.86646</i>	<i>15.25049</i>	<i>- 60.75742; - 0.97550 *</i>
	Time	- 18.69168	15.45082	- 48.97529; 11.59193
	<i>Age class (4–5 years)</i>	<i>353.53687</i>	<i>24.47397</i>	<i>305.5679; 401.50585 *</i>
	<i>Age class (6–8 years)</i>	<i>485.18387</i>	<i>23.76984</i>	<i>438.59498; 531.77276 *</i>
	<i>Age class (≥ 9 years)</i>	<i>222.11726</i>	<i>21.78588</i>	<i>179.41693; 264.81758 *</i>

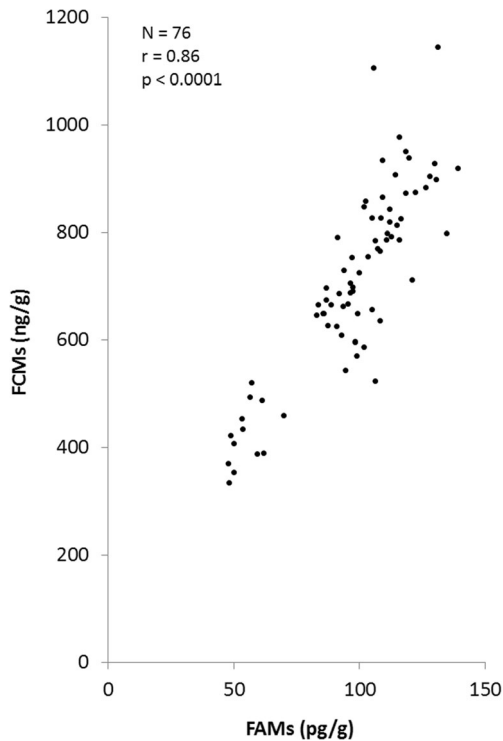


Fig. 3 Relationship between FAMs and FCMs concentrations of female chamois

A further confirmation of the antipredatory function of female vigilance was the increased head lift duration at a distance greater than 75 m from the nearest cliff (Frid 1997).

Although head lift rate decreased with increasing group size (Bmany-eye or detection effect[^]; Barnard and Thompson 1985; Elgar 1989; Lima 1995), occurrence of no chewing vigilance showed an opposite trend. Feeding interference also increased with increasing group size. Among foraging individuals, the risk of an aggression can elicit social monitoring of conspecifics, thus resulting in increased cost of vigilance (Treves 2000; Fortin et al. 2004; Favreau et al. 2010). We suggest that, in summer, both the greater offspring vulnerability and feeding interference could lead to greater vigilance levels of female chamois, compared to autumn (our prediction, 2b).

The evaluation of FAMs and FCMs as hormonal indicators of aggressiveness and stress, respectively, has been used widely among mammals (primates: Barrett et al. 2002; carnivores: Dloniak et al. 2006; ungulates: Pavitt et al. 2016), with limitations (Touma and Palme 2005). FAMs of female chamois showed no seasonal variation, whereas FCMs

decreased from July through October, thus partially supporting our prediction (2c). Seasonal decrease of FCMs accompanied that of vigilance behavior. In lactating females, glucocorticoid secretion is associated with higher frequency and intensity of suckling stimuli (Walker et al. 1992; Pavitt et al. 2016). Accordingly, frequency of suckling events decreased from July to October, in our study population (Scornavacca et al. 2016, 2018). Romero (2002) reported that the seasonal variation of basal glucocorticoid concentration is species/sex-specific and depends on the relative energetic costs of the different seasons for each species and on life-history patterns^A. We suggest that three factors could explain the higher level of FCMs in summer than in autumn: (a) greater offspring vulnerability, (b) higher aggression rate, and/or (c) greater costs of lactation. If so, seasonal variation of nursing behavior may be more important than seasonality of food resources per se in determining response to stress of female chamois, supporting our hypothesis 2.

In addition to seasonality, variation in behavior and endocrine levels was related to age. In most mammals, social dominance is positively associated to age and/or androgens (Anderson 1986; Creel et al. 1992; Coltman et al. 2002; Pelletier and Festa-Bianchet 2006; Martin et al. 2013). Accordingly, probability to win a challenge increased with age in female chamois (Lovari and Locati 1991). Aggression intensity and androgens were related to age: both the use of threats and FAMs levels were higher in adult than in subadult females, supporting our predictions (3a, 3c). Although we cannot rule out that adult females showed higher FAMs levels because of the age-dependent sexual maturation (Murray et al. 1998; Vendola et al. 1998), higher androgens may have helped them to establish social dominance by promoting aggression (Floody 1983; Giammanco et al. 2005). Threats were more likely to lead the opponent to withdraw than displays, as the latter were used more often when the attacked female reacted. Also, the attacking individual won 99.9% of aggressions ($N = 1912$ aggressive events) (see also Lovari and Locati 1991). Thus, female chamois initiated interactions when they had a high probability of winning, suggesting that their age-based dominance relied on both experience and fighting ability/physical clues such as body mass, leading the oldest, heaviest females to dominate other age classes (Locati and Lovari 1991; Jennings et al. 2004). The establishment of a dominance hierarchy is common in polygynous male mammals, mainly to achieve mating advantages (Clutton-Brock and Huchard 2013). Yet, the adaptive significance of female dominance in polygynous species is less clear, ranging from male choice^A to resource defense (for reviews: Rosvall 2011; Stockley and Bro-Jørgensen 2011; Clutton-Brock and Huchard 2013; Stockley and Campbell 2013). Gaining advantages for male choice may not play a major role in explaining dominance among female chamois, at least in our study period, not inclusive of the mating season (November: Lovari and Locati 1991). As the intensity of female aggression peaked on the most nutritious forb patches, we suggest that social dominance in female chamois may have developed to establish priority access to crucial resources (Boness et al. 1982; Hutchins and Geist 1987; Locati and Lovari 1990; McDonough 1994; Ceacero et al. 2012). Access to better pasture is likely to provide advantages in terms of a better production of milk (Festa-Bianchet and Jorgenson 1998; Min et al. 2005; Therrien et al. 2007). If so, female dominance may ultimately enhance growth and survival of offspring (Côté and Festa-Bianchet 2001b).

In contrast to both our predictions (3b, 4b), vigilance was not associated to age. This is in apparent contrast to what reported by Lovari and Rosto (1985) who found that subadult females showed greater vigilance than adult ones, in another area of the Apennine chamois range. The area where Lovari and Rosto (1985) conducted their observations had richer, concentrated patches of vegetation dominated by *Trifolium thalii* and other forbs, than our study area (Ferrari et al. 1988). Larger, closely knit groups form on rich, concentrated food resources (Bruno and Lovari 1989), which may promote a greater feeding interference where subadults are disadvantaged, thereby more vigilant.

Adult females, in particular those 4–8 years old, were the most stressed, showing the greatest FCMs concentration. No data are available on the age-related breeding success of female Apennine chamois. In this study, the ratio of juveniles to adult females was 24:30 in 2014 and 28:31 in 2015. As chamois gives birth to 1 offspring/year (Lovari and Bruno 2003), these ratios may support the view that subadult females of Apennine chamois do not reproduce (Tettamanti et al. 2015; Morin et al. 2016, for Northern chamois). In the closely-related Northern chamois, female breeding peaks between 4 and 8 years, and decreases in older individuals (Tettamanti et al. 2015; Morin et al. 2016). Thus, our results suggest that motherhood is stressful for female chamois, likely because of the high metabolic costs of lactation (Walker et al. 1992; Kenagy and Place 2000; Goymann et al. 2001; Pavitt et al. 2016). Feeding interference may have played an additional role in influencing stress levels among females, because 6–8 years old individuals were involved in more aggressions than the other age classes and showed the highest FAMs levels.

Overall, as adult females were more aggressive and more stressed than subadult ones, our results provided a stronger support to our hypothesis 3, suggesting a greater response to stress in high-ranking individuals (Creel 2001). However, as the 4–8 years old, middle-ranking females were the most stressed of adult age classes, our results ultimately support neither the stress of dominants^A, nor the stress of subordinates^A hypotheses (Creel 2001). Rather, they suggest that reproduction and feeding interference were key determinants of stress in female chamois (sensu Goymann and Wingfield 2004).

Previous studies reported contradictory relationships between androgens and glucocorticoids (positive relationship: Mooring et al. 2006; negative relationship: Bartoš et al. 2010; no relationship: Pavitt et al. 2016). A high level of circulating androgens could result in significant costs to individuals (Folstad and Karter 1992). Accordingly, female chamois with greater level of FAMs also showed higher FCMs, suggesting physiological stress from increased individual aggressiveness, which is energetically demanding (Mooring et al. 2006; Taillon and Côté 2008; Pavitt et al. 2015). To this end,

the adaptive significance of retaining greater androgen levels should reflect a further advantage to females (e.g. Dantzer et al. 2011). Androgens are commonly associated with the development of male characteristics (Fletcher 1978). Yet, in mammals, androgens may be converted to estrogens (Adkins-Regan 1981), which promote feminine traits and/or behavior (Trainor and Marler 2001, 2002). The greater levels of FAMS showed by 4–8-year-old females might be ultimately associated—via conversion to estrogens—to development of maternal care, e.g., milk production. If so, 4–8-year-old females would additionally benefit from increased levels of FAMS in achieving a greater reproductive success. Androgens can inhibit glucocorticoids, whereas estrogen can enhance them (Handa et al. 1994); as stressed females also retained greater androgen levels, the occurrence of androgen-estrogen conversion in female chamois may be supported.

Although long-term evaluation of fitness is required to assess female reproductive success, our results show that seasonal and age-related variation underlies the phenology of social behavior and response to stress, suggesting complex trade-offs between access to food, dominance, and nursing behavior, for females. Adult females were the most aggressive and the most dominant, with higher endocrine levels. We suggest that their higher stress was ultimately linked to the costs of maternal care, emphasizing the key importance of summer months for the life cycle of mountain herbivores (Festa-Bianchet 1988; Ruckstuhl and Ingold 1994; Pettorelli et al. 2007; Therrien et al. 2007). Individual-level studies could further clarify relationships between nursing-related costs (Froy et al. 2016), hormonal mechanisms such as testosterone-estrogen conversion and potential reproductive benefits.

Acknowledgments We are indebted to D. Febbo, G. Rossi, and A. Carrara for their continuous support and to the ALMNP staff for logistic support. D. Scornavacca, S. Bernardini, and V. Pietrocini helped with data collection in 2014 and N. Pallari in 2015. We are grateful to L. Bartoš, J. Herrero, V.A. Viblanc, and an anonymous reviewer for their helpful comments on early drafts of this manuscript. D.M. Shackleton and M. Festa-Bianchet kindly edited our English and made comments on our last draft.

Authors' contributions SL and FF planned this study; NF participated in study planning, conducted most data collection and data analyses, wrote the first draft, and participated in writing all drafts; FF participated in data collection and analyses, as well as in writing up all drafts. SL supervised all stage of this study and participated in writing up all drafts; CB participated in data collection and analyses; CB and AC participated in data collection; EM carried out hormone assays and wrote the relevant text; MCP provided statistical advice and participated in data analyses.

Funding Financial support was provided by the Italian Ministry of University and Research (PRIN project no. 2010P7LFW4).

Compliance with ethical standards

Conflict of interest The authors declare that they have no conflict of interest.

Ethical approval We received the appropriate permissions for conducting the study in Abruzzo, Lazio and Molise National Park from the responsible authorities. All applicable international, national, and/or institutional guidelines for the use of animals were followed. Ethical approval from ethics committee for involving animals was not required.

References

- Adkins-Regan E (1981) Hormone specificity, androgen metabolism, and social behavior. *Am Zool* 21:257–271
- Alados CL (1985) An analysis of vigilance in the Spanish ibex (*Capra pyrenaica*). *Z Tierpsychol* 68:58–64
- Albon SD, Langvatn R (1992) Plant phenology and the benefits of migration in a temperate ungulate. *Oikos* 65:502–513
- Altmann J (1974) Observational study of behavior: sampling methods. *Behaviour* 49:227–267
- Anderson CM (1986) Female age: male preference and reproductive success in primates. *Int J Primatol* 7:305–326
- Barnard CJ, Thompson DBA (1985) Gulls and plovers: the ecology and behaviour of mixed species feeding groups. Croom Helm, London
- Barrett GM, Shimizu K, Bardi M, Asaba S, Mori A (2002) Endocrine correlates of rank, reproduction, and female-directed aggression in male Japanese macaques (*Macaca fuscata*). *Horm Behav* 42:85–96
- Bartoš L (2012) MuMIn: multi-model inference. R package version 1.15.6, <https://cran.rproject.org/web/packages/MuMIn>
- Bartoš L, Schams D, Bubenik GA, Kotrba R, Tománek M (2010) Relationship between rank and plasma testosterone and cortisol in red deer males (*Cervus elaphus*). *Physiol Behav* 101:628–634
- Baruzzi C, Lovari S, Fattorini N (2017) Catch me if you can: antipredatory behaviour of chamois to the wolf. *Ethol Ecol Evol* 29:589–598
- Beauchamp G (2008) What is the magnitude of the group-size effect on vigilance? *Behav Ecol* 19:1361–1368
- Beauchamp G (2015a) Function of animal vigilance. In: Beauchamp G (ed) *Animal vigilance. Monitoring predators and competitors*. Elsevier, Boston, pp 23–50
- Beauchamp G (2015b) Drivers of animal vigilance. In: Beauchamp G (ed) *Animal vigilance. Monitoring predators and competitors*. Elsevier, Boston, pp 81–116
- Bolker BM, Brooks ME, Clark CJ, Geange SW, Poulsen JR, Stevens MHH, White JSS (2009) Generalized linear mixed models: a practical guide for ecology and evolution. *Trends Ecol Evol* 24:127–135

- Bolker BM, Skaug H, Magnusson A, Nielsen A (2012) Getting started with the Glmm ADMB package, <http://glmmadmb.r-forge.r-project.org>
- Boness DJ, Anderson SS, Cox CR (1982) Functions of female aggression during the pupping and mating season of grey seals, *Halichoerus grypus (fabricius)*. *Can J Zool* 60:2270–2278
- Bonier F, Martin PR, Moore IT, Wingfield JC (2009). Do baseline glu- cocorticoids predict fitness? *Trends Ecol Evol* 24(11), 634–642
- Boonstra R (2013) Reality as the leading cause of stress: rethinking the impact of chronic stress in nature. *Funct Ecol* 27:11–23
- Breuner CW, Wingfield JC, Romero LM (1999) Diel rhythms of basal and stress-induced corticosterone in a wild, seasonal vertebrate, Gambel's white-crowned sparrow. *J Exp Zool* 284:334–342
- Brivio F, Bertolucci C, Tettamanti F, Filli F, Apollonio M, Grignolio S (2016) The weather dictates the rhythms: alpine chamois activity is well adapted to ecological conditions. *Behav Ecol Sociobiol* 70: 1291–1304
- Bruno E, Lovari S (1989) Foraging behaviour of adult female Apennine chamois in relation to seasonal variation in food supply. *Acta Theriol* 34:513–523
- Burnham KP, Anderson DR (2002) Model selection and multimodel inference: a practical information-theoretic approach. Springer- Verlag, New York
- Caraco T (1979) Time budgeting and group size: a theory. *Ecology* 60: 611–617
- Carnevali L, Lovari S, Monaco A, Mori E (2016) Nocturnal activity of a Bdiurnal^ species, the northern chamois, in a predator-free Alpine area. *Behav Process* 126:101–107
- Ceacero F, Garcia AJ, Landete-Castillejos T, Bartošová J, Bartoš L,
- Gallego L (2012) Benefits for dominant red deer hinds under a competitive feeding system: food access behavior, diet and nutrient selection. *PLoS One* 7:e32780
- Ciucci P, Tosoni E, Di Domenico G, Quattrociochi F, Boitani L (2014) Seasonal and annual variation in the food habits of Apennine brown bears, central Italy. *J Mammal* 95:572–586
- Clement TS, Parikh V, Schrupf M, Fernald RD (2005) Behavioral coping strategies in a cichlid fish: the role of social status and acute stress response in direct and displaced aggression. *Horm Behav* 47:336–342
- Clutton-Brock TH, Albon SD, Gibson RM, Guinness FE (1979) The logical stag: adaptive aspects of fighting in red deer (*Cervus elaphus L.*). *Anim Behav* 27:211–225
- Clutton-Brock T, Huchard E (2013) Social competition and its consequences in female mammals. *J Zool* 289:151–171
- Coltman DW, Festa-Bianchet M, Jorgenson JT, Strobeck C (2002) Age- dependent sexual selection in bighorn rams. *Proc R Soc Lond B* 269:165–172
- Corlatti L (2018) Fecal cortisol metabolites under anonymized sampling: robust estimates despite significant individual heterogeneity. *Ecol Indic* 95:775–780
- Corlatti L, Béthaz S, von Hardenberg A, Bassano B, Palme R, Lovari S (2012) Hormones, parasites and male mating tactics in Alpine chamois: identifying the mechanisms of life history trade-offs. *Anim Behav* 84:1061–1070
- Corlatti L, Palme R, Lovari S (2014) Physiological response to etho- ecological stressors in male Alpine chamois: timescale matters! *Naturwissenschaften* 101:577–586
- Côté SD (2000) Dominance hierarchies in female mountain goats: stability, aggressiveness and determinants of rank. *Behaviour* 137:1541–1566
- Côté SD, Festa-Bianchet M (2001a) Birthdate, mass and survival in mountain goat kids: effects of maternal characteristics and forage quality. *Oecologia* 127:230–238
- Côté SD, Festa-Bianchet M (2001b) Reproductive success in female mountain goats: the influence of age and social rank. *Anim Behav* 62:173–181
- Creel S (2001) Social dominance and stress hormones. *Trends Ecol Evol* 16:491–497
- Creel S, Creel N, Wildt DE, Monfort SL (1992) Behavioural and endo- crine mechanisms of reproductive suppression in Serengeti dwarf mongooses. *Anim Behav* 43:231–245
- Dalmau A, Ferret A, Chacon G, Manteca X (2007) Seasonal changes in fecal cortisol metabolites in Pyrenean chamois. *J Wildlife Manage* 71:190–
- Dantzer B, McAdam AG, Palme R, Humphries MM, Boutin S, Boonstra R (2011) Maternal androgens and behaviour in free-ranging North American red squirrels. *Anim Behav* 81:469–479
- Darmon G, Bourgoin G, Marchand P, Garel M, Dubray D, Jullien JM, Loison A (2014) Do ecologically close species shift their daily activities when in sympatry? A test on chamois in the presence of mouflon. *Biol J Linn Soc* 111:621–626
- Dawkins MS (2007) Observing animal behaviour: design and analysis of quantitative data. Oxford University Press, New York
- van de Pol M, Wright J (2009) A simple method for distinguishing within-versus between-subject effects using mixed models. *Anim Behav* 77:753–758
- DeVries AC, Glasper ER, Detillion CE (2003) Social modulation of stress responses. *Physiol Behav* 79:399–407
- Dloniak SM, French JA, Holekamp KE (2006) Rank-related maternal effects of androgens on behaviour in wild spotted hyaenas. *Nature* 440:1190–1193
- Eccles TR, Shackleton DM (1986) Correlates and consequences of social status in female bighorn sheep. *Anim Behav* 34:1392–1401
- Elgar MA (1989) Predator vigilance and group size in mammals and birds. *Biol Rev* 64:13–33
- Ezenwa VO, Stefan Ekernas L, Creel S (2012) Unravelling complex associations between testosterone and parasite infection in the wild. *Funct Ecol* 26:123–133
- Fairbanks WS (1994) Dominance, age and aggression among female pronghorn, *Antilocapra americana* (family: Antilocapridae). *Ethology*

- Favreau FR, Goldizen AW, Pays O (2010) Interactions among social monitoring, anti-predator vigilance and group size in eastern grey kangaroos. *Proc R Soc Lond B* 277:2089–2095
- Favreau FR, Goldizen AW, Fritz H, Pays O (2018) Food supply fluctuations constrain group sizes of kangaroos and in turn shape their vigilance and feeding strategies. *Anim Behav* 135:165–176
- Ferrari C, Rossi G, Cavani C (1988) Summer food habits and quality of female, kid and subadult Apennine chamois, *Rupicapra pyrenaica ornata* Neumann, 1899 (Artiodactyla, Bovidae). *Z Saugetierkd* 53: 170–177
- Ferretti F, Costa A, Corazza M, Pietrocini V, Cesaretti G, Lovari S (2014) Males are faster foragers than females: intersexual differences of foraging behaviour in the Apennine chamois. *Behav Ecol Sociobiol* 68:1335–1344
- Ferretti F, Corazza M, Campana I, Pietrocini V, Brunetti C, Scornavacca D, Lovari S (2015) Competition between wild herbivores: reintroduced red deer and Apennine chamois. *Behav Ecol* 26:550–559
- Festa-Bianchet M (1988) Birthdate and survival in bighorn lambs (*Ovis canadensis*). *J Zool* 214:653–661
- Festa-Bianchet M, Jorgenson JT (1998) Selfish mothers: reproductive expenditure and resource availability in bighorn ewes. *Behav Ecol* 9:144–150
- Finch CE, Rose MR (1995) Hormones and the physiological architecture of life history evolution. *Q Rev Biol* 70:1–52
- Fletcher TJ (1978) The induction of male sexual behavior in red deer *Cervus elaphus* by the administration of testosterone to hinds and estradiol 17-beta to stags. *Horm Behav* 11:74–88
- Floody OR (1983) Hormones and aggression in female mammals. In: Svare BB (ed) *Hormones and aggressive behavior*. Springer, Boston, pp 39–89
- Folstad I, Karter AJ (1992) Parasites, bright males, and the immunocompetence handicap. *Am Nat* 139:603–622
- Fortin D, Boyce MS, Merrill EH, Fryxell JM (2004) Foraging costs of vigilance in large mammalian herbivores. *Oikos* 107:172–180
- Fox J, Weisberg S (2011) *An R companion to applied regression*, 2nd edn. SAGE, Thousand Oaks
- Freedman LS, Pee D (1989) Return to a note on screening regression equations. *Am Stat* 43:279–282
- Frid, A (1997). Vigilance by female Dall's sheep: interactions between predation risk factors. *Anim Behav* 53(4), 799–808
- Froy H, Walling CA, Pemberton JM, Clutton-Brock TH, Kruuk LE (2016) Relative costs of offspring sex and offspring survival in a polygynous mammal. *Biol Lett* 12:20160417
- Gauthreaux SA (1978) The ecological significance of behavioural dominance. In: Bateson PPG, Klopfer PH (eds) *Perspectives in ethology* 3. Plenum, New York, pp 17–54
- Gelman A (2008) Scaling regression inputs by dividing by two standard deviations. *Stat Med* 27:2865–2873
- Giammanco M, Tabacchi G, Giammanco S, Di Majo D, La Guardia M (2005) Testosterone and aggressiveness. *Med Sci Monit* 11: 136–145
- Gittleman JL, Thompson SD (1988) Energy allocation in mammalian reproduction. *Am Zool* 28:863–875
- Goldberg JL, Grant JW, Lefebvre L (2001) Effects of the temporal predictability and spatial clumping of food on the intensity of competitive aggression in the Zenaida dove. *Behav Ecol* 12:490–495
- Goymann W, Wingfield JC (2004) Allostatic load, social status and stress hormones: the costs of social status matter. *Anim Behav* 67:591–602
- Goymann W, East ML, Wachter B, Höner OP, Möstl E, Van't Hof TJ, Hofer H (2001) Social, state-dependent and environmental modulation of faecal glucocorticoid levels in free-ranging female spotted hyenas. *Proc R Soc Lond B* 268:2453–2459
- Gross JE, Demment MW, Alkon PU, Kotzman M (1995) Feeding and chewing behaviours of Nubian ibex: compensation for sex-related differences in body size. *Funct Ecol* 9:385–393
- Hadinger U, Haymerle A, Knauer F, Schwarzenberger F, Walzer C (2015) Faecal cortisol metabolites to assess stress in wildlife: evaluation of a field method in free-ranging chamois. *Methods Ecol Evol* 6:1349–1357
- Hall KRL (1960) Social vigilance behaviour of the Chacma baboon, *Papio ursinus*. *Behaviour* 16:261–294
- Handa RJ, Burgess LH, Kerr JE, O'Keefe JA (1994) Gonadal steroid hormone receptors and sex differences in the hypothalamo-pituitary-adrenal axis. *Horm Behav* 28:464–476
- Hoare DJ, Couzin ID, Godin J-GJ, Krause J (2004) Context-dependent group size choice in fish. *Anim Behav* 67:155–164
- Hutchins M, Geist V (1987) Behavioural considerations in the management of mountain-dwelling ungulates. *Mt Res Dev* 7:135–144
- Jennings DJ, Gammell MP, Carlin CM, Hayden TJ (2004) Effect of body weight, antler length, resource value and experience on fight duration and intensity in fallow deer. *Anim Behav* 68:213–221
- Keay JM, Singh J, Gaunt MC, Kaur T (2006) Fecal glucocorticoids and their metabolites as indicators of stress in various mammalian species: a literature review. *J Zoo Wildlife Med* 37:234–244
- Kenagy GJ, Place NJ (2000) Seasonal changes in plasma glucocorticosteroids of free-living female yellow-pine chipmunks: effects of reproduction and capture and handling. *Gen Comp Endocr* 117:189–199
- Keverne EB, Leonard RA, Scruton DM, Young SK (1978) Visual monitoring in social groups of talapoin monkeys (*Miopithecus talapoin*). *Anim Behav* 26:933–944
- Kim JW, Brown GE, Grant JW (2004) Interactions between patch size and predation risk affect competitive aggression and size variation in juvenile convict cichlids. *Anim Behav* 68:1181–1187
- Kitaysky AS, Piatt JF, Wingfield JC, Romano M (1999) The adrenocortical stress-response of black-legged kittiwake chicks in relation to dietary

restrictions. *J Comp Physiol B* 169:303–310

- Koolhaas JM, Bartolomucci A, Buwalda BD, de Boer SF, Flügge G, Korte SM, Meerlo P, Murison R, Olivier B, Palanza P, Richter- Levin G, Sgoifo A, Steimer T, Stiedl O, van Dijk G, Wöhr M, Fuchs E (2011) Stress revisited: a critical evaluation of the stress concept. *Neurosci Biobehav Rev* 35:1291–1301
- Kortet R, Hedrick ANN (2007) A behavioural syndrome in the field cricket *Gryllus integer*: intrasexual aggression is correlated with activity in a novel environment. *Biol J Linn Soc* 91:475–482
- Krämer A (1969) Soziale Organisation und Sozialverhalten einer Gemspopulation (*Rupicapra rupicapra* L.) der Alpen. *Z Tierpsychol* 26:889–964
- Krebs CJ, Boonstra R, Boutin S, Sinclair AR (2001) What drives the 10- year cycle of snowshoe hares? *Bioscience* 51:25–35
- Le Saout S, Massouh M, Martin JL, Presseault-Gauvin H, Poilvé E, Côté SD, Picot D, Verheyden H, Chamaillé-Jammes S (2016) Levels of fecal glucocorticoid metabolites do not reflect environmental contrasts across islands in black-tailed deer (*Odocoileus hemionus sitkensis*) populations. *Mamm Res* 61:391–398
- Lenihan C, Van Vuren D (1996) Growth and survival of juvenile yellow-bellied marmots (*Marmota flaviventris*). *Can J Zool* 74:297–302
- Lima SL (1987) Vigilance while feeding and its relation to the risk of predation. *J Theor Biol* 124:303–316
- Lima SL (1995) Back to the basics of anti-predatory vigilance: the group-size effect. *Anim Behav* 49:11–20
- Lipetz VE, Bekoff M (1982) Group size and vigilance in pronghorns. *Z Tierpsychol* 58:203–216
- Locati M, Lovari S (1990) Sexual differences in aggressive behaviour of the Apennine chamois. *Ethology* 84:295–306
- Locati M, Lovari S (1991) Clues for dominance in female chamois: age, weight, or horn size? *Aggressive Behav* 17:11–15
- Lovari S (1977) The Abruzzo chamois. *Oryx* 14:47–50
- Lovari S (1985) Behavioural repertoire of the Abruzzo chamois, *Rupicapra pyrenaica ornata* Neumann, 1899 (Artiodactyla: Bovidae). *Säugetierk Mitt* 32:113–116
- Lovari S, Bruno E (2003) *Rupicapra pyrenaica*. In: Boitani L, Lovari S, Vigna-Taglianti A (eds) *Fauna d'Italia: Mammalia III, Carnivora-Artiodactyla*. Calderini, Bologna, pp 403–412
- Lovari S, Cosentino R (1986) Seasonal habitat selection and group size of the Abruzzo chamois (*Rupicapra pyrenaica ornata*). *Ital J Zool* 53:73–78
- Lovari S, Locati M (1991) Temporal relationships, transitions and structure of the behavioural repertoire in male Apennine chamois during the rut. *Behaviour* 119:77–103
- Lovari S, Rolando A (2004) Guida allo studio degli animali in natura. Bollati Boringhieri, Torino
- Lovari S, Rosto G (1985) Feeding rate and social stress of female chamois foraging in groups. In: Lovari S (ed) *The biology and management of mountain ungulates*. Croom Helm, London, pp 102–105
- Lovari S, Ferretti F, Corazza M, Minder I, Troiani N, Ferrari C, Saddi A (2014) Unexpected consequences of reintroductions: competition between reintroduced red deer and Apennine chamois. *Anim Conserv* 17:359–370
- Lovari S, Fattorini N, Boesi R, Bocci A (2015) Male ruff colour as a rank signal in a monomorphic-horned mammal: behavioural correlates. *Sci Nat* 102:1–12
- Mancinelli S, Boitani L, Ciucci P (2018) Determinants of home range size and space use patterns in a protected wolf (*Canis lupus*) population in central Apennines, Italy. *Can J Zool* (published online. <https://doi.org/10.1139/cjz-2017-0210>)
- Martin AM, Presseault-Gauvin H, Festa-Bianchet M, Pelletier F (2013) Male mating competitiveness and age-dependent relationship between testosterone and social rank in bighorn sheep. *Behav Ecol Sociobiol* 67:919–928
- Mason TH, Stephens PA, Apollonio M, Willis SG (2014) Predicting potential responses to future climate in an alpine ungulate: interspecific interactions exceed climate effects. *Glob Change Biol* 20: 3872–3882
- McDonough CM (1994) Determinants of aggression in 9-banded armadillos. *J Mammal* 75:189–198
- McDougall PL, Ruckstuhl KE (2018) Vigilance behaviour is more contagious when chewing stops: examining the characteristics of contagious vigilance in bighorn sheep. *Behav Ecol Sociobiol* 72:143
- Michelena P, Pillot MH, Henrion C, Toulet S, Boissy A, Bon R (2012) Group size elicits specific physiological response in herbivores. *Biol Lett* 8:537–539
- Millsbaugh JJ, Washburn BE (2004) Use of fecal glucocorticoid metabolite measures in conservation biology research: considerations for application and interpretation. *Gen Comp Endocr* 138:189–199
- Min BR, Hart SP, Sahlut T, Satter LD (2005) The effect of diets on milk production and composition, and on lactation curves in pastured dairy goats. *J Dairy Sci* 88:2604–2615
- Molvar EM, Bowyer RT (1994) Costs and benefits of group living in a recently social ungulate: the Alaskan moose. *J Mammal* 75:621–630
- Monaghan P, Metcalfe NB (1985) Group foraging in wild brown hares: effects of resource distribution and social status. *Anim Behav* 33:993–999
- Mooring MS, Patton ML, Lance VA, Hall BM, Schaad EW, Fetter GA, Fortin SS, McPeak KM (2006) Glucocorticoids of bison bulls in relation to social status. *Horm Behav* 49:369–375
- Morin A, Rughetti M, Rioux-Paquette S, Festa-Bianchet M (2016) Older conservatives: reproduction in female Alpine chamois (*Rupicapra rupicapra*) is increasingly risk-averse with age. *Can J Zool* 94:311–321
- Möstl E, Palme R (2002) Hormones as indicators of stress. *Domest Anim Endocrinol* 23:67–74

- Möstl E, Messmann S, Bagu E, Robia C, Palme R (1999) Measurement of glucocorticoid metabolite concentrations in faeces of domestic livestock. *J Vet Med* 46:621–631
- Murray AA, Gosden RG, Allison V, Spears N (1998) Effect of androgens on the development of mouse follicles growing in vitro. *J Reprod Fertil* 113:27–33
- Noël MV, Grant JW, Carrigan JG (2005) Effects of competitor-to-resource ratio on aggression and size variation within groups of convict cichlids. *Anim Behav* 69:1157–1163
- Patalano M, Lovari S (1993) Food habits and trophic niche overlap of the wolf *Canis lupus* (L. 1758) and the red fox *Vulpes vulpes* (L. 1758) in a Mediterranean mountain area. *Rev Ecol Terre-Vie* 48:279–294
- Pavitt AT, Walling CA, Möstl E, Pemberton JM, Kruuk LE (2015) Cortisol but not testosterone is repeatable and varies with reproductive effort in wild red deer stags. *Gen Comp Endocrinol* 222:62–68
- Pavitt AT, Pemberton JM, Kruuk LE, Walling CA (2016) Testosterone and cortisol concentrations vary with reproductive status in wild female red deer. *Ecol Evol* 6:1163–1172
- Pecorella I, Ferretti F, Sforzi A, Macchi E (2016) Effects of culling on vigilance behaviour and endogenous stress response of female fallow deer. *Wildlife Res* 43:189–196
- Pelletier F, Festa-Bianchet M (2006) Sexual selection and social rank in bighorn rams. *Anim Behav* 71:649–655
- Pelletier F, Bauman J, Festa-Bianchet M (2003) Fecal testosterone in bighorn sheep (*Ovis canadensis*): behavioural and endocrine correlates. *Can J Zool* 81:1678–1684
- Pesaresi S, Galdenzi D, Biondi E, Casavecchia S (2014) Bioclimate of Italy: application of the worldwide bioclimatic classification system. *J Maps* 10:538–553
- Pettorelli N, Pelletier F, Hardenberg AV, Festa-Bianchet M, Côté SD (2007) Early onset of vegetation growth vs. rapid green-up: impacts on juvenile mountain ungulates. *Ecology* 88:381–390
- Primi R, Filibeck G, Amici A, Bückle C, Cancellieri L, di Filippo A, Gentile C, Guglielmino A, Latini R, Mancini LD, Mensing SA, Rossi CM, Rossini F, Scoppola A, Sulli C, Venanzi R, Ronchi B, Piovesan G (2016) From Landsat to leafhoppers: a multidisciplinary approach for sustainable stocking assessment and ecological monitoring in mountain grasslands. *Agric Ecosyst Environ* 234:118–133
- R Core Team (2013) R: a language and environment for statistical computing. R Foundation for Statistical Computing, Vienna, Austria <http://www.R-project.org>
- Reeder DM, Krämer KM (2005) Stress in free-ranging mammals: integrating physiology, ecology, and natural history. *J Mammal* 86:225–235
- Romero LM (2002) Seasonal changes in plasma glucocorticoid concentrations in free-living vertebrates. *Gen Comp Endocrinol* 128:1–24
- Romero LM, Remage-Healey L (2000) Daily and seasonal variation in response to stress in captive starlings (*Sturnus vulgaris*): corticosterone. *Gen Comp Endocrinol* 119:52–59
- Rosvall KA (2011) Intrasexual competition in females: evidence for sexual selection? *Behav Ecol* 22:1131–1140
- Rowell TE (1974) The concept of social dominance. *Behav Biol* 11:131–154
- Ruckstuhl KE, Ingold P (1994) On the suckling behaviour of alpine chamois *Rupicapra rupicapra*. *Z Saugetierkd* 59:230–235
- Ruckstuhl KE, Ingold P (1999) Aspects of mother-kid behavior in Alpine chamois, *Rupicapra rupicapra rupicapra*. *Z Saugetierkd* 64:76–84
- Ruckstuhl KE, Festa-Bianchet M, Jorgenson JT (2003) Bite rates in Rocky Mountain bighorn sheep (*Ovis canadensis*): effects of season, age, sex and reproductive status. *Behav Ecol Sociobiol* 54:167–173
- Rüttimann S, Giacometti M, McElligott AG (2008) Effect of domestic sheep on chamois activity, distribution and abundance on sub-alpine pastures. *Eur J Wildlife Res* 54:110–116
- Sapolsky RM (1983) Endocrine aspects of social instability in the olive baboon. *Am J Primatol* 5:365–372
- Sapolsky RM (1992) Neuroendocrinology of the stress response. In: Becker JB, Breedlove SM, Crews D (eds) *Behavioral endocrinology*. MIT Press, Cambridge, pp 287–324
- Schaller GB (1977) *Mountain monarchs*. The University of Chicago Press, Chicago
- Scornavacca D, Brunetti C (2015) Cooperative defence of female chamois successfully deters an eagle attack. *Mammalia* 80:453–456
- Scornavacca D, Lovari S, Cotza A, Bernardini S, Brunetti C, Pietrocini V, Ferretti F (2016) Pasture quality affects juvenile survival through reduced maternal care in a mountain-dwelling ungulate. *Ethology* 122:1–11
- Scornavacca D, Cotza A, Lovari S, Ferretti F (2018) Suckling behaviour and allonursing in the Apennine chamois. *Ethol Ecol Evol* (published online). <https://doi.org/10.1080/03949370.2017.1423115>
- Searcy WA, Wingfield JC (1980) The effects of androgen and antiandrogen on dominance and aggressiveness in male red-winged blackbirds. *Horm Behav* 14:126–135
- Sheriff MJ, Krebs CJ, Boonstra R (2010) Assessing stress in animal populations: do fecal and plasma glucocorticoids tell the same story? *Gen Comp Endocrinol* 166:614–619
- Sheriff MJ, Dantzer B, Delehanty B, Palme R, Boonstra R (2011) Measuring stress in wildlife: techniques for quantifying glucocorticoids. *Oecologia* 166:869–887
- Sirot E (2000) An evolutionarily stable strategy for aggressiveness in feeding groups. *Behav Ecol* 11:351–356
- Soma KK, Sullivan KA, Tramontin AD, Saldanha CJ, Schlinger BA, Wingfield JC (2000) Acute and chronic effects of an aromatase inhibitor on territorial aggression in breeding and nonbreeding male song sparrows. *J Comp Physiol A* 186:759–769
- Šprem N, Zanella D, Ugarković D, Prebanić I, Gančević P, Corlatti L (2015) Unimodal activity pattern in forest-dwelling chamois: typical behaviour or interspecific avoidance? *Eur J Wildlife Res* 61:789–794

- Stahl J, Tolsma PH, Loonen MJJE, Drent RH (2001) Subordinates explore but dominants profit: resource competition in high Arctic barnacle goose flocks. *Anim Behav* 61:257–264
- Stockley P, Bro-Jørgensen J (2011) Female competition and its evolutionary consequences in mammals. *Biol Rev* 86:341–366
- Stockley P, Campbell A (2013) Female competition and aggression: interdisciplinary perspectives. *Phil Trans R Soc B* 368:20130073
- Stokes AW (1962) Agonistic behaviour among blue tits at a winter feeding station. *Behaviour* 19:118–137
- Syme GJ, Syme LA (1979) Social structure in farm animals. Elsevier, Amsterdam
- Taillon J, Côté SD (2007) Social rank and winter forage quality affect aggressiveness in white-tailed deer fawns. *Anim Behav* 74:265–275
- Taillon J, Côté SD (2008) Are faecal hormone levels linked to winter progression, diet quality and social rank in young ungulates? An experiment with white-tailed deer (*Odocoileus virginianus*) fawns. *Behav Ecol Sociobiol* 62:1591–1600
- Taves MD, Desjardins JK, Mishra S, Balshine S (2009) Androgens and dominance: sex-specific patterns in a highly social fish (*Neolamprologus pulcher*). *Gen Comp Endocrinol* 161:202–207
- Tettamanti F, Grignolio S, Filli F, Apollonio M, Bize P (2015) Senescence in breeding success of female Alpine chamois (*Rupicapra rupicapra*): the role of female quality and age. *Oecologia* 178: 187–195
- Therrien JF, Côté SD, Festa-Bianchet M, Ouellet JP (2007) Conservative maternal care in an iteroparous mammal: a resource allocation experiment. *Behav Ecol Sociobiol* 62:193–199
- Thierry AM, Brajon S, Spée M, Raclot T (2014) Differential effects of increased corticosterone on behavior at the nest and reproductive output of chick-rearing Adélie penguins. *Behav Ecol Sociobiol* 68: 721–732
- Touma C, Palme R (2005) Measuring fecal glucocorticoid metabolites in mammals and birds: the importance of validation. *Ann N Y Acad Sci* 1046:54–74
- Touma C, Sachser N, Möstl E, Palme R (2003) Effects of sex and time of day on metabolism and excretion of corticosterone in urine and feces of mice. *Gen Comp Endocrinol* 130:267–278
- Trainor BC, Marler CA (2001) Testosterone, paternal behaviour, and aggression in the monogamous California mouse (*Peromyscus californicus*). *Horm Behav* 40:32–42
- Trainor BC, Marler CA (2002) Testosterone promotes paternal behaviour in a monogamous mammal via conversion to oestrogen. *Proc R Soc Lond B* 269:823–829
- Treves A (2000) Theory and method in studies of vigilance and aggregation. *Anim Behav* 60:711–722
- Underwood R (1982) Vigilance behaviour in grazing African antelopes. *Behaviour* 79:81–107
- Vendola KA, Zhou J, Adesanya OO, Weil SJ, Bondy CA (1998) Androgens stimulate early stages of follicular growth in the primate ovary. *J Clin Invest* 101:2622–2629
- Viblanc VA, Gineste B, Stier A, Robin JP, Groscolas R (2014) Stress hormones in relation to breeding status and territory location in colonial king penguin: a role for social density? *Oecologia* 175: 763–772
- Villamuelas M, Fernández N, Albanell E, Gálvez-Cerón A, Bartolomé J, Mentaberre G, López-Olvera JR, Fernández-Aguilar X, Colom-Cadena A, López-Martín JM, Pérez-Barbería J, Garel M, Marco I, Serrano E (2016) The enhanced vegetation index (EVI) as a proxy for diet quality and composition in a mountain ungulate. *Ecol Indic* 61:658–666
- Voellmy IK, Goncalves IB, Barrette MF, Monfort SL, Manser MB (2014) Mean fecal glucocorticoid metabolites are associated with vigilance, whereas immediate cortisol levels better reflect acute anti-predator responses in meerkats. *Horm Behav* 66:759–765
- Waite TA (1987) Dominance-specific vigilance in the tufted titmouse: effects of social context. *Condor* 89:932–935
- Walker CD, Lightman SL, Steele MK, Dallman MF (1992) Suckling is a persistent stimulus to the adrenocortical system of the rat. *Endocrinology* 130:115–125
- Walther F (1974) Some reflections on expressive behavior in combat and courtship of certain horned ungulates. In: Geist V, Walther F (eds) Behavior of ungulates and its relation to management. IUCN Publ. 24, Morges, pp 56–106
- Wingfield JC (2005) The concept of allostasis: coping with a capricious environment. *J Mammal* 86:248–254
- Wingfield JC, Hegner RE, Dufty AM Jr, Ball GF (1990) The challenge hypothesis: theoretical implications for patterns of testosterone secretion, mating systems, and breeding strategies. *Am Nat* 136:829–846
- Wingfield JC, Jacobs J, Hillgarth N (1997) Ecological constraints and the evolution of hormone-behavior interrelationships. *Ann N Y Acad Sci* 807:22–41
- Wingfield JC, Maney DL, Breuner CW, Jacobs JD, Lynn S, Ramenofsky M, Richardson RD (1998) Ecological bases of hormone behavior interactions: the emergency life-history stage. *Am Zool* 38:191–206
- Winnie J Jr, Creel S (2007) Sex-specific behavioural responses of elk to spatial and temporal variation in the threat of wolf predation. *Anim Behav* 73:215–225
- Yee TW (2015) Vector generalized linear and additive models: with an implementation in R. Springer, New York
- Zuur AF, Ieno EN, Walker NJ, Saveliev AA, Smith GM (2009) Mixed effects models and extensions in ecology with R. Springer, New York
- Zwijacz-Kozica T, Selva N, Barja I, Silván G, Martínez-Fernández L, Illera JC, Jodłowski M (2013) Concentration of fecal cortisol metabolites in chamois in relation to tourist pressure in Tatra National Park (South Poland). *Acta Theriol* 58:215–222