

# Trapping in proton irradiated $p^+ - n - n^+$ silicon sensors at fluences anticipated at the HL-LHC outer tracker

To cite this article: W. Adam *et al* 2016 *JINST* 11 P04023

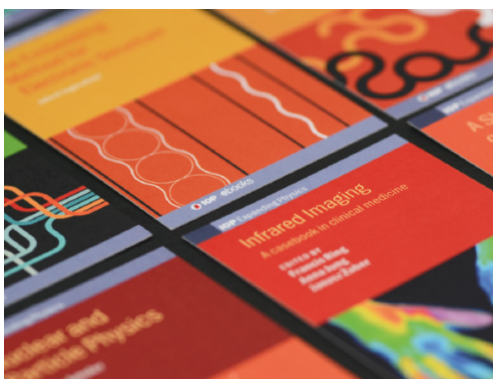
View the [article online](#) for updates and enhancements.

## Related content

- [Heavily irradiated N-in-p thin planar pixel sensors with and without active edges](#)  
S Terzo, L Andricek, A Macchiolo *et al*.
- [Characterisation of strip silicon detectors for the ATLAS Phase-II Upgrade with a micro-focused X-ray beam](#)  
L. Poley, A. Blue, R. Bates *et al*.
- [Radiation hardness study of Silicon Detectors for the CMS High Granularity Calorimeter \(HGCAL\)](#)  
E. Currás, M. Mannelli, M. Moll *et al*.

## Recent citations

- [Study of interpad-gap of HPK 3.1 production LGADs with Transient Current Technique](#)  
S. Bharthuar *et al*
- [Measurements with silicon detectors at extreme neutron fluences](#)  
I. Mandi *et al*
- [Properties of HPK UFSD after neutron irradiation up to  \$6e15\$  n/cm<sup>2</sup>](#)  
Z. Galloway *et al*



**IOP | ebooks™**

Bringing together innovative digital publishing with leading authors from the global scientific community.

Start exploring the collection—download the first chapter of every title for free.

## Trapping in proton irradiated $p^+ - n - n^+$ silicon sensors at fluences anticipated at the HL-LHC outer tracker



### Tracker group of the CMS collaboration

*E-mail:* [thomas.poehlsen@cern.ch](mailto:thomas.poehlsen@cern.ch)

**ABSTRACT:** The degradation of signal in silicon sensors is studied under conditions expected at the CERN High-Luminosity LHC. 200  $\mu\text{m}$  thick n-type silicon sensors are irradiated with protons of different energies to fluences of up to  $3 \cdot 10^{15}$  neq/cm<sup>2</sup>. Pulsed red laser light with a wavelength of 672 nm is used to generate electron-hole pairs in the sensors. The induced signals are used to determine the charge collection efficiencies separately for electrons and holes drifting through the sensor. The effective trapping rates are extracted by comparing the results to simulation. The electric field is simulated using Synopsys device simulation assuming two effective defects. The generation and drift of charge carriers are simulated in an independent simulation based on PixelAV. The effective trapping rates are determined from the measured charge collection efficiencies and the simulated and measured time-resolved current pulses are compared. The effective trapping rates determined for both electrons and holes are about 50% smaller than those obtained using standard extrapolations of studies at low fluences and suggest an improved tracker performance over initial expectations.

**KEYWORDS:** Detector modelling and simulations II (electric fields, charge transport, multiplication and induction, pulse formation, electron emission, etc); Radiation damage to detector materials (solid state); Radiation-hard detectors; Si microstrip and pad detectors

ARXIV EPRINT: [1505.01824](https://arxiv.org/abs/1505.01824)

Corresponding author: Thomas Poehlsen.



---

## Contents

|          |   |           |
|----------|---|-----------|
| <b>1</b> | <b>Introduction</b>   | <b>1</b>  |
| <b>2</b> | <b>Sensors and measurement technique</b>                          | <b>2</b>  |
| <b>3</b> | <b>Simulation of charge collection</b>                            | <b>3</b>  |
| <b>4</b> | <b>Comparison of measurements with simulation</b>                 | <b>5</b>  |
| <b>5</b> | <b>Extracted trapping rates</b>                                   | <b>7</b>  |
| <b>6</b> | <b>Applicability to eh-pairs generated along the sensor depth</b> | <b>9</b>  |
| <b>7</b> | <b>Summary</b>  | <b>10</b> |
|          | <b>Tracker group of the CMS collaboration</b>                     | <b>12</b> |

---

## 1 Introduction

After the upgrade of the Large Hadron Collider (LHC) to the High-Luminosity LHC (HL-LHC), which is foreseen in 2022, the radiation damage the tracking detectors will experience increases significantly. For both the development of sensors with performance optimised for HL-LHC fluences and the development of Monte Carlo simulation, a quantitative description of signal loss in irradiated silicon sensors is needed, especially in the inner layers of the general-purpose experiments ATLAS [1] and CMS [2].

Radiation damage during operation will degrade tracker performance because of the generation of electrically active defects in the bulk of the silicon sensors [3]. The main consequences are:

- higher sensor leakage current leading to increased noise, heat generation, and power consumption;
- a change in the space charge distribution reducing the active part of the sensor volume and thus requiring higher operating voltages;
- trapping of charge carriers leading to lower signals and hence the degradation of the spatial resolution and the efficiency.

In this work we will concentrate on the effects of charge loss due to trapping.

In previous work [4, 5] charge loss was studied at 1 MeV neutron equivalent fluences,<sup>1</sup>  $\phi_{\text{neq}}$ , of up to  $2.4 \cdot 10^{14}$  neq/cm<sup>2</sup>. This fluence range is relevant for large parts of the current CMS Tracker.

---

<sup>1</sup>Neutron equivalent scaling is motivated by the leakage current, which was shown to be proportional to the non-ionising energy loss (NIEL) [3]. However, charge losses do not scale to the NIEL [4, 5].

The assumption of voltage-independent trapping rates was made. The measured signal currents are corrected with an exponential,

$$I_{\text{corrected}}(t) = I_{\text{measured}}(t) \cdot \exp(t/\tau_{tr}), \quad (1.1)$$

with a free parameter  $\tau_{tr}$  that is tuned so that the integrals of the corrected currents give equal charges for voltages above the full-depletion voltage. This method does not require information about the charge collection efficiency, as it could not be determined experimentally using the measurements that were taken. A linear dependence of the trapping rate on the fluence was found:

$$1/\tau_{e,h} = \beta_{e,h}(T) \cdot \phi_{\text{neq}}, \quad (1.2)$$

where  $1/\tau_{e,h}$  is the effective trapping rate and  $\beta_{e,h}(T)$  is the temperature-dependent damage parameter for electrons and holes, respectively. For electrons (holes) at a sensor temperature of  $-20^\circ\text{C}$  a value of  $\beta_e = (5.8 \pm 0.2) \cdot 10^{-16} \text{ cm}^2/\text{ns}$  ( $\beta_h = (8.2 \pm 0.2) \cdot 10^{-16} \text{ cm}^2/\text{ns}$ ) was found for sensors after charged-hadron irradiation [4]. The quoted uncertainties do not include the 10% uncertainty associated with the dosimetry. In studies at higher fluences [6–8] charge collection measurements were found to be in tension with those presented in ref. [4], when considering only the voltage range where no charge multiplication is expected. It is therefore important to also determine effective trapping rates at the higher fluences expected at the HL-LHC of between  $3 \cdot 10^{14}$  and  $3 \cdot 10^{15} \text{ neq/cm}^2$  separately for electrons and for holes.

This fluence range is expected after the collection of  $3000 \text{ fb}^{-1}$  of HL-LHC data at a radius in the range between 10 cm and 60 cm from the interaction point. At the inner radii the highest fluences are expected and most of the HL-LHC fluence arises from pions created in pp collisions, with mechanisms for causing damage that are similar to those of high energy protons. In this paper we do not investigate the damage caused by the neutrons. We used a simple trapping model that does not depend on local variation of the electric field, or on the charge carrier concentration. This is equivalent to an effective trapping rate that does not depend on the position in the sensor.

In the study presented here electron-hole pairs ( $eh$ -pairs) are generated using pulsed laser light of 672 nm wavelength on both the  $p^+$  (front) and the  $n^+$  (rear) side of pad sensors of  $p^+ \text{-n-n}^+$  float-zone silicon. Using this set-up, the charge collection efficiencies are determined, and effective trapping rates are extracted through simulation. The simulation is based on the expected electric field distributions in the presence of two defect levels. This method of describing the electric field is also used in refs. [8–11]. Finally, the extracted trapping rates are checked using pulsed laser light of 1062 nm wavelength to generate the  $eh$ -pairs.

## 2 Sensors and measurement technique

The  $p^+ \text{-n-n}^+$  silicon pad sensors are produced by Hamamatsu Photonics<sup>2</sup> from  $\langle 100 \rangle$ -oriented float-zone wafers of  $200 \mu\text{m}$  thickness with an oxygen concentration of about  $8 \cdot 10^{16} \text{ cm}^{-3}$ . This oxygen concentration is similar to that of the oxygen-enriched float zone sensors studied in ref. [11] (about  $10^{17} \text{ cm}^{-3}$ ). Oxygen enriched sensors were also studied previously in ref. [4] where no significant dependence of trapping on the level of oxygen-enrichment was detected. The pad area of the

<sup>2</sup>Hamamatsu webpage: <http://www.hamamatsu.com/>.

sensors under study is  $0.25 \text{ cm}^2$ . The full-depletion voltage before irradiation is about 90 V. Other measurements made using sensors from the same production run were reported in refs. [12–16].

Electron-hole pairs are generated at either the front or the rear side of the  $p^+ - n - n^+$  sensors. Pulsed laser light with a wavelength of 672 nm is used, which has a penetration depth in silicon of about  $3.5 \mu\text{m}$  at the temperature used ( $-20^\circ\text{C}$ ). The time-resolved charge collection measurements are performed in 10 V steps from 0 V up to 1000 V and analysed in detail at 600 V. The voltage of 600 V is chosen because it represents the upper limit for the outer tracker bias voltages arising from the current power supplies and safety limits on cables. The light pulses have a duration of about 60 ps full width half maximum, the number of  $eh$ -pairs generated by each pulse is about  $10^6$ , and the laser repetition rate is set to 200 Hz.

The current signal induced in the pad is read out by a digital oscilloscope with 1 GHz bandwidth and 5 GHz sampling rate (Tektronix DPO 4104). The induced charge,  $Q$ , is calculated by integrating the time-resolved current signal over 30 ns, and the charge collection efficiency (CCE) is determined as the ratio of the collected charge after irradiation to that measured for a fully depleted non-irradiated reference sensor at 400 V bias (full-depletion voltage 90 V). The total uncertainty of the CCE determined by this procedure is estimated to be 3%. The main contributions to the uncertainty are a spread of  $Q$  after reassembling a sensor into the setup and measuring it again (about 2%) and a systematic uncertainty of  $Q$  because of a voltage dependence (about 2%) which is observed for non-irradiated sensors (figure 1). The voltage dependence of  $Q$  may be explained by the voltage dependent charge collection time in combination with the used electronic circuit and the integration time window of 30 ns. At 30 ns the electronic circuit of the setup leads to negative contributions in the current signal. More details about the setup, the CCE determination, and the CCE uncertainty can be found in ref. [15]. The CCE as a function of bias voltage is shown in figure 1. As expected for light with a short penetration depth the CCE is 0 for voltages below full depletion and 1 at voltages above full depletion, if the non-irradiated sensor is illuminated at the  $n^+$  side.

Five sensors were irradiated at the PS (CERN) with 23 GeV protons. These sensors were not cooled during irradiation, which took up to about two weeks for the highest fluence. They were investigated without additional annealing after irradiation. One sensor was irradiated at KIT (Karlsruhe) with 23 MeV protons. This sensor was cooled during irradiation to below  $0^\circ\text{C}$  and investigated after 10 minutes of annealing at  $60^\circ\text{C}$ . No significant dependence of the effective trapping times on annealing time has been observed in ref. [4] for the short term annealing, so that no significant impact is expected as a result of the different annealing scenarios.

### 3 Simulation of charge collection

The electric field is calculated using Synopsys device simulation,<sup>3</sup> assuming two effective traps: a deep acceptor,  $A$ , and a deep donor,  $D$ , with energy levels of  $E_D = E_V + 0.48 \text{ eV}$  and  $E_A = E_C - 0.525 \text{ eV}$  [10], where  $E_V$  and  $E_C$  represent the energy levels of the valence band and the conduction band. Different defect concentrations and cross sections are used for the different irradiation types and for the different fluences. The values relevant for the studies presented in this paper are reported in table 1. Some values were extracted for silicon sensors after 23 GeV

<sup>3</sup>Synopsys webpage: <http://www.synopsys.com>.

proton irradiation from grazing-angle test beam measurements that are described in ref. [11] (in literature [4, 11] the proton energy is often cited with the full energy of 24 GeV, but in this document we refer to the kinetic energy of 23 GeV). They are used to describe measurements after 23 GeV proton irradiation. The other values are taken from ref. [8]. They were tuned to describe capacitance, current, and time-resolved charge collection measurements on single-pad silicon sensors after 23 MeV proton irradiation. They are used to describe measurements after 23 MeV proton irradiation.

**Table 1.** The key parameter values used in the Synopsys device simulation. These include: donor and acceptor concentrations,  $N_D$  and  $N_A$ , and their electron and hole capture cross sections,  $\sigma_{D,A}^{e,h}$ , for silicon sensors after irradiation with 23 GeV protons (top rows) [11], and for sensors after irradiation with 23 MeV protons (bottom rows) [8].

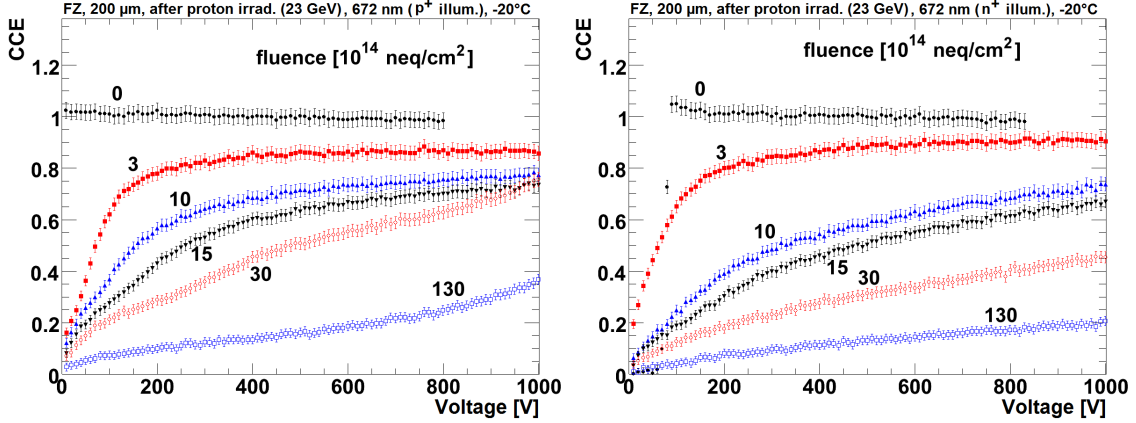
| $\phi_{\text{neq}}$<br>[ $10^{14}$ neq/cm $^2$ ] | $N_A$<br>[ $10^{14}$ cm $^{-3}$ ] | $N_D$<br>[ $10^{14}$ cm $^{-3}$ ] | $\sigma_A^e$<br>[ $10^{-15}$ cm $^2$ ] | $\sigma_D^e$<br>[ $10^{-15}$ cm $^2$ ] | $\sigma_A^h$<br>[ $10^{-15}$ cm $^2$ ] | $\sigma_D^h$<br>[ $10^{-15}$ cm $^2$ ] |
|--|-----------------------------------|-----------------------------------|--|--|--|--|
| 2 (23 GeV) [11]                                  | 6.8                               | 10                                | 6.6                                    | 6.6                                    | 1.65                                   | 6.6                                    |
| 6 (23 GeV) [11]                                  | 16                                | 40                                | 6.6                                    | 6.6                                    | 1.65                                   | 1.65                                   |
| 12 (23 GeV) [11, 18] <sup>4</sup>                | 30                                | 69                                | 3.8                                    | 3.8                                    | 0.94                                   | 0.94                                   |
| 24 (23 GeV) [11, 18] <sup>4</sup>                | 61                                | 138                               | 3.8                                    | 3.8                                    | 0.94                                   | 0.94                                   |
| 3 (23 MeV) [8]                                   | 4.2                               | 13                                | 10                                     | 10                                     | 10                                     | 10                                     |
| 10 (23 MeV) [8]                                  | 12.5                              | 52                                | 10                                     | 10                                     | 10                                     | 10                                     |

In figure 2 it can be seen that the electric field distribution is different for sensors after 23 MeV proton irradiation compared to that simulated for 23 GeV proton irradiation. The figure shows the electric field distribution for the defect values specified in ref. [8], namely, for an irradiation with 23 MeV protons and a fluence of  $10^{15}$  neq/cm $^2$ , and for the defect values given in ref. [11] for an irradiation with 23 GeV protons and a fluence of  $1.2 \cdot 10^{15}$  neq/cm $^2$ .

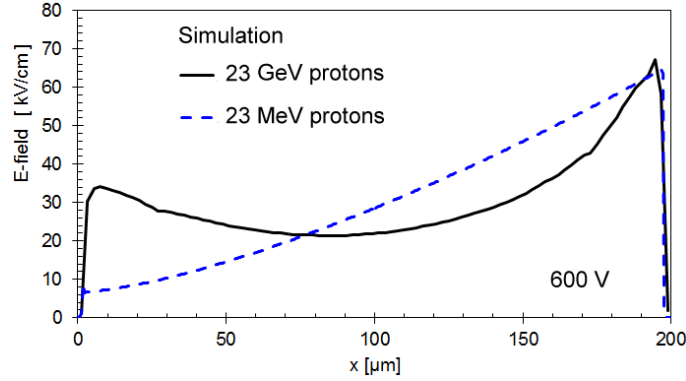
The PixelAV detector simulation package [11] is used to simulate the transport of charge carriers. The effective trapping rates in the simulation are assumed to be constant over the depth of the sensor. Some modifications are made in order to describe the measurements reported here:

- Drift parameters are adjusted to describe the drift in  $\langle 100 \rangle$ -oriented silicon [19] (changes in the assumed mobility directly impact the resulting trapping rates);
- Charges are generated at the front or the rear side of the sensor with a penetration depth of  $3.5 \mu\text{m}$  to simulate the charge generation by laser light of 672 nm wavelength. The number of charges generated is fixed to 40 000  $eh$ -pairs;
- The induced signal is calculated using a linear weighting potential between front and rear contact;
- The trapping rates are tuned iteratively to match the predicted CCE to the measured CCE.

<sup>4</sup> The data for the fluence points  $12 \cdot 10^{14}$  neq/cm $^2$  and  $24 \cdot 10^{14}$  neq/cm $^2$  have not been published. They were determined using the same methods as in ref. [11].



**Figure 1.** The CCE as a function of bias voltage is shown for 200  $\mu\text{m}$  thick n-type sensors after different fluences of 23 GeV proton irradiation. Laser light of 672 nm wavelength is used to generate  $eh$ -pairs close to the  $p^+$ -side (left), so that the signals are dominated by electron drift, or close to the  $n^+$ -side (right), so that the signal is dominated by hole drift.

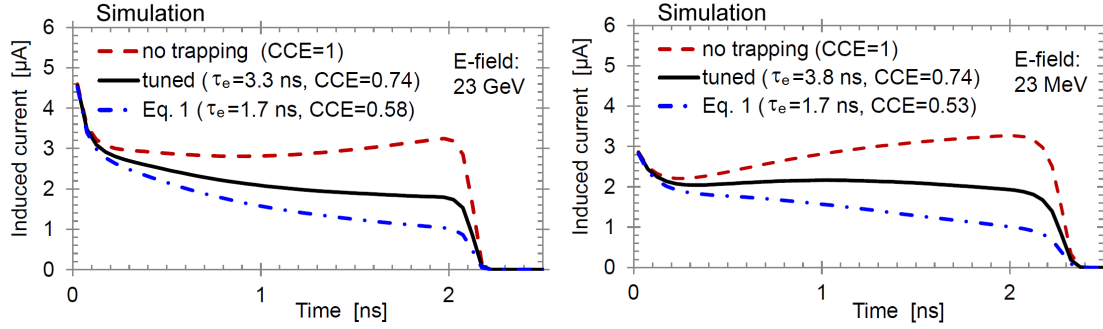


**Figure 2.** The simulated electric field at 600 V as a function of sensor depth,  $x$ , for a 200  $\mu\text{m}$  thick n-type sensor after proton irradiation with different proton energies. The  $p^+$  implant is at  $x = 0 \mu\text{m}$ , and the  $n^+$  implant is at  $x = 200 \mu\text{m}$ . The field is calculated using parameters from ref. [11] for irradiation with 23 GeV protons ( $1.2 \cdot 10^{15} \text{ neq/cm}^2$ ) and ref. [8] for irradiation with 23 MeV protons ( $1 \cdot 10^{15} \text{ neq/cm}^2$ ).

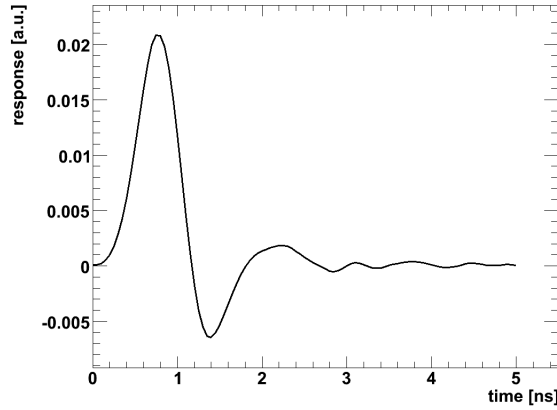
In figure 3 the resulting time-resolved current signals are shown for three different effective trapping rates and for two different electric fields. For the “no trapping” case, the integrated signals are  $Q = 40\,000$  electrons, i.e. all charges are collected ( $CCE = 1$ ). For the other cases the CCE decreases monotonically with increasing  $1/\tau$ . The effective trapping rate can be tuned to reproduce the measured CCE.

#### 4 Comparison of measurements with simulation

In order to compare the simulation to the sensor measurements, the electronic response of the experimental setup must be taken into account. This is achieved by convolving the simulated current signals with the response of the setup to a delta function; the latter is shown in figure 4. The response was extracted by studying the charge collection in non-irradiated sensors and has been reported in ref. [17].



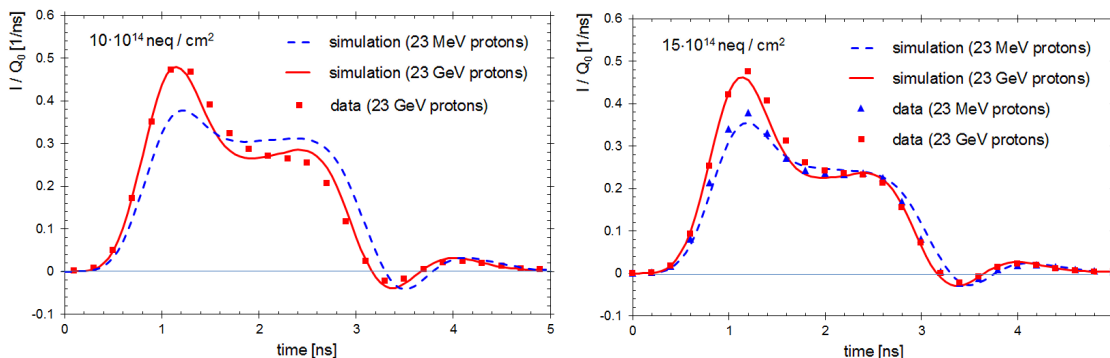
**Figure 3.** Simulated current signals at 600 V bias for a proton-irradiated 200  $\mu\text{m}$  thick n-type sensor after 40 000  $eh$ -pairs are generated instantaneously close to the  $p^+$ -side. A penetration depth of 3.5  $\mu\text{m}$  is used to simulate light with 672 nm wavelength. The signals are dominated by electron drift. Different electron trapping rates are used: no trapping, trapping tuned to  $CCE = 0.74$  (the value 0.74 is taken from figure 1 for  $\phi_{\text{neq}} = 10^{15}$   $\text{neq}/\text{cm}^2$ ), and trapping according to equation (1.2) with  $\phi_{\text{neq}} = 10^{15}$   $\text{neq}/\text{cm}^2$ . For the two proton energies the respective electric field distributions from figure 2 are used. Left: simulation for 23 GeV protons. Right: simulation for 23 MeV protons.



**Figure 4.** Transfer characteristic of the circuit (response of the setup to a delta function for the sensor current).

The simulated current signals, after the electronic response of the setup is taken into account, are compared to measured signals in figure 5. The measurements are performed after proton irradiation of  $10^{15}$   $\text{neq}/\text{cm}^2$  (23 GeV protons) and  $1.5 \cdot 10^{15}$   $\text{neq}/\text{cm}^2$  (23 GeV protons and 23 MeV protons). A fluence of  $1.5 \cdot 10^{15}$   $\text{neq}/\text{cm}^2$  is expected after the collection of 3000  $\text{fb}^{-1}$  of HL-LHC data at a radius of 20 cm from the interaction point. In the simulation the effective trapping rates are adjusted so that the simulated CCE agrees with the measured CCE. As seen in figure 2 the expected electric field distribution is different for sensors after 23 MeV proton irradiation compared to that expected after 23 GeV proton irradiation. The same electric field is used for both fluences ( $10^{15}$   $\text{neq}/\text{cm}^2$  and  $1.5 \cdot 10^{15}$   $\text{neq}/\text{cm}^2$ ) as there are only limited data available on the two effective traps. For 23 GeV protons the field is based on parameters tuned to sensors irradiated to  $1.2 \cdot 10^{15}$   $\text{neq}/\text{cm}^2$  using 23 GeV protons. For 23 MeV protons the field is based on parameters for the fluence  $10^{15}$   $\text{neq}/\text{cm}^2$  [8] and 23 MeV protons. In ref. [8] the field has only been studied up to this fluence.





**Figure 5.** Comparison of simulated and measured current signals,  $I(t)$ , at 600 V, normalised to the deposited charge,  $Q_0$ . The signals are mainly induced by electrons drifting from the front side to the rear side of the sensor. The results from a  $200\ \mu\text{m}$  thick n-type sensor are shown after 23 GeV proton irradiation to a fluence of  $10^{15}\ \text{neq/cm}^2$  (left) and  $1.5 \cdot 10^{15}\ \text{neq/cm}^2$  (right), and after 23 MeV proton irradiation to a fluence of  $1.5 \cdot 10^{15}\ \text{neq/cm}^2$  (right). At  $10^{15}\ \text{neq/cm}^2$  no sensors that were irradiated with 23 MeV protons are available.

The simulated current signals are in good agreement with the measured currents, especially in light of the crude assumptions used in the simulation. Taking into account the fact that the measured pulse shapes are quite different after 23 GeV proton irradiation compared to after 23 MeV proton irradiation (figure 5), it is clear that different electric field distributions must be used for sensors that have undergone 23 MeV proton irradiation versus those that have undergone 23 GeV proton irradiation. However, even if quite different electric field distributions are used, the measured CCE is reproduced using similar trapping rates for the two cases (figure 3).

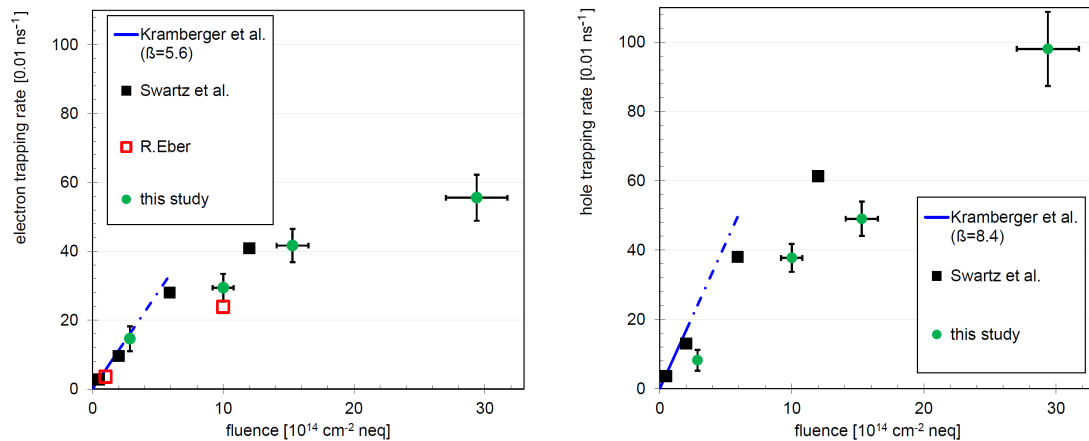
## 5 Extracted trapping rates

The effective trapping rates that provide the best description of the measurements in terms of CCE are listed in table 2. They are also shown in figure 6, where they are compared to the trapping rates reported in refs. [4, 8, 11]. For  $3 \cdot 10^{14}\ \text{neq/cm}^2$  the results show little dependence on the electric field: they are the same regardless of whether the parameters for  $2 \cdot 10^{14}\ \text{neq/cm}^2$  or  $6 \cdot 10^{14}\ \text{neq/cm}^2$  (table 1) are used. For  $3 \cdot 10^{15}\ \text{neq/cm}^2$  the electric field was calculated according to ref. [11] with the electric field tuned to describe pixel sensors irradiated with a similar fluence of  $2.4 \cdot 10^{15}\ \text{neq/cm}^2$ . The CCE uncertainties quoted in table 2 are the statistical and systematic uncertainties added in quadrature. To determine the E-field uncertainty different electric field distributions were tested, for each fluence the two that correspond to the closest fluences available, e.g. for  $1 \cdot 10^{15}\ \text{neq/cm}^2$  the values in table 1 are used to calculate the electric fields that correspond to  $6 \cdot 10^{14}\ \text{neq/cm}^2$  and to  $1.2 \cdot 10^{15}\ \text{neq/cm}^2$ . The CCE measurements taken at the highest fluence of  $1.3 \cdot 10^{16}\ \text{neq/cm}^2$  (figure 1) are not analysed, since no simulation of the electric field at similar fluences is available.

For electron trapping the results of this work are compatible with the results presented in refs. [4, 8, 11] for the fluences studied there. However, it is clear that the results presented in ref. [4] cannot be extrapolated to fluences of  $10^{15}\ \text{neq/cm}^2$  and above as this leads to an overestimate of trapping rates (and consequently an underestimate of the CCE). This has already been observed

**Table 2.** Trapping rates extracted from the CCE at  $T = -20^\circ\text{C}$  and  $V = 600\text{ V}$  after irradiation with 23 GeV protons. Note that the trapping rates are effective rates describing the CCE for electrons drifting from the p-n junction to the rear side, and holes drifting from the rear side to the p-n junction.

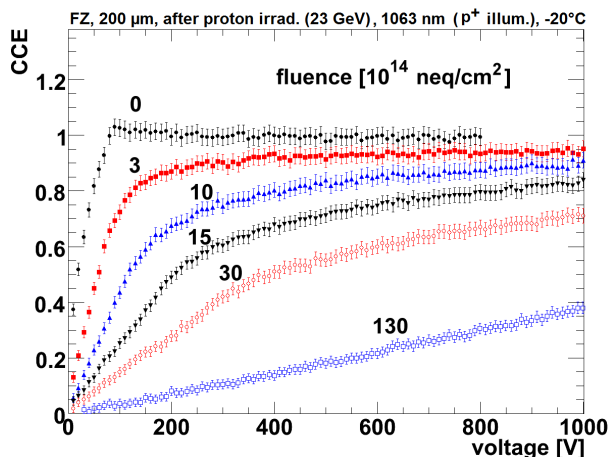
| $\phi_{\text{neq}} [\text{neq}/\text{cm}^2]$ | $1/\tau_e [1/\text{ns}]$                                | $1/\tau_h [1/\text{ns}]$                                |
|--|---|---|
| $3 \cdot 10^{14}$                            | $0.145 \pm 0.035(\text{CCE}) \pm 0.005(\text{E-field})$ | $0.085 \pm 0.025(\text{CCE}) \pm 0.005(\text{E-field})$ |
| $1 \cdot 10^{15}$                            | $0.30 \pm 0.04(\text{CCE}) \pm 0.03(\text{E-field})$    | $0.38 \pm 0.04(\text{CCE}) \pm 0.04(\text{E-field})$    |
| $1.5 \cdot 10^{15}$                          | $0.42 \pm 0.04(\text{CCE}) \pm 0.03(\text{E-field})$    | $0.49 \pm 0.05(\text{CCE}) \pm 0.03(\text{E-field})$    |
| $3 \cdot 10^{15}$                            | $0.55 \pm 0.06(\text{CCE}) \pm 0.06(\text{E-field})$    | $0.98 \pm 0.10(\text{CCE}) \pm 0.12(\text{E-field})$    |



**Figure 6.** Effective trapping rates for electrons (left) and holes (right) at  $V = 600\text{ V}$  according to this study (23 GeV protons,  $T = -20^\circ\text{C}$ ) compared to studies by G. Kramberger et al. [4] (23 GeV protons,  $T = -10^\circ\text{C}$ ), M. Swartz et al. [11] (23 GeV protons,  $T = -10^\circ\text{C}$ ), and R. Eber [8] (23 MeV protons,  $T = -10^\circ\text{C}$ ). The vertical error bars show the CCE uncertainties (table 2). No significant difference has been observed between  $T = -10^\circ\text{C}$  and  $T = -20^\circ\text{C}$ .

in refs. [6, 8]. For hole trapping lower trapping rates compared to refs. [4] and [11] are already observed at  $3 \cdot 10^{14}\text{ neq}/\text{cm}^2$ . This corresponds to the high CCE measured at this fluence (figure 1). Note that for our measurements higher bias voltages and thinner sensors are used compared to those analysed in ref. [4] and that in ref. [11] the trapping rates are based on those from ref. [4].

For one irradiation ( $1 \cdot 10^{15}\text{ neq}/\text{cm}^2$  of 23 GeV protons) the electron trapping rate was extracted not only at 600 V but also at 400 V and at 900 V. For this fluence we do not expect charge multiplication below 1000 V, since charge multiplication starts to be relevant only above 120 kV/cm [7]. Simulated fields are below 70 kV/cm at 600 V (figure 2). Only for higher fluences of  $3 \cdot 10^{15}\text{ neq}/\text{cm}^2$  and above the CCE measurements indicate charge multiplication for electrons above 800 V (figure 1). It is found that the trapping rates are similar, but slightly higher at 400 V ( $0.33\text{ ns}^{-1}$ ) and slightly smaller at 900 V ( $0.28\text{ ns}^{-1}$ ) compared to the rate at 600 V ( $0.3\text{ ns}^{-1}$ ). Similar effects have been reported in refs. [6, 7]. However, due to the uncertainties in the order of 10% (table 2), which are partly systematic uncertainties, it is not clear whether this effect is significant.



**Figure 7.** CCE as a function of bias voltage for 200  $\mu\text{m}$  thick n-type sensors after irradiation with different fluences of 23 GeV protons. Laser light of 1062 nm wavelength was used to generate  $eh$ -pairs throughout the whole sensor depth.

## 6 Applicability to $eh$ -pairs generated along the sensor depth

To test the applicability of the results reported in table 2 to cases where  $eh$ -pairs are generated along the whole sensor depth (as is the case for charged particles traversing the sensor) further simulations are performed and compared to the measurements.

A separate simulation is performed in which  $eh$ -pairs are generated along the whole sensor depth using an attenuation length of 1000  $\mu\text{m}$ . The simulation was used to describe CCE measurements where  $eh$ -pairs are generated using light of 1062 nm wavelength (front-side illumination). The measured CCE as a function of bias voltage is shown in figure 7 and a comparison of the simulated and measured CCE at 600 V bias is presented in table 3.

The simulated CCE is, on average, 0.06 below the measured CCE if the trapping rates from table 2 (simulation A) are used. This indicates that the effective trapping rates for the measurements using 1062 nm light are lower than for the measurements where  $eh$ -pairs are generated close to the implants only. This is expected if the leakage current leads to a non-uniform occupation of defects that are relevant for trapping. We conclude that charge losses might be overestimated if the rates given in table 2 are used to predict charge collection in cases where  $eh$ -pairs are generated along the whole sensor depth. However, compared to the widely used extrapolation of effective trapping rates at low fluences the overestimation is significantly reduced (table 3).

The results presented here may be used in further simulations of irradiated silicon sensors. Due to the complex (and sometimes non-linear) generation of defects in the irradiation process we have not described the results with a parameterisation. Instead a linear interpolation may be used to simulate fluences lying in between those considered in this work. For significantly different bias voltages a correction may be applied (effective trapping rates appear about 10% higher when the bias voltage is decreased by 200 V). The applicability of the results was not tested using segmented sensors. However, comparison with other studies [11] shows that similar values of the effective trapping rates are used to describe data in strip sensors (figure 6).

**Table 3.** Simulated values of the CCE compared to measurements at 600 V using 1062 nm light to generate  $eh$ -pairs. In simulation A, the trapping parameters from table 2 are used, in simulation B, extrapolated trapping rates (equation (1.2),  $\beta_e = 5.8 \cdot 10^{-16} \text{cm}^2/\text{ns}$ ,  $\beta_h = 8.2 \cdot 10^{-16} \text{cm}^2/\text{ns}$ ) according to ref. [4] are used.

| $\phi_{\text{neq}}$ [neq/cm <sup>2</sup> ] | CCE measured    | CCE simulated A | CCE simulated B |
|--|-----------------|-----------------|-----------------|
| $3 \cdot 10^{14}$                          | $0.93 \pm 0.03$ | $0.92 \pm 0.03$ | $0.85 \pm 0.02$ |
| $1 \cdot 10^{15}$                          | $0.85 \pm 0.03$ | $0.76 \pm 0.03$ | $0.60 \pm 0.03$ |
| $1.5 \cdot 10^{15}$                        | $0.75 \pm 0.03$ | $0.70 \pm 0.03$ | $0.50 \pm 0.03$ |
| $3 \cdot 10^{15}$                          | $0.60 \pm 0.03$ | $0.51 \pm 0.03$ | $0.27 \pm 0.02$ |

## 7 Summary

Time-resolved charge collection measurements using red laser light of 672  $\mu\text{m}$  wavelength have been used to determine the effective trapping rates for electrons (holes) moving from the  $p^+$  to the  $n^+$  ( $n^+$  to the  $p^+$ ) contact in silicon single-pad sensors irradiated with protons with fluences up to  $3 \cdot 10^{15} \text{neq/cm}^2$ . Light of this wavelength has a penetration depth of about 3.5  $\mu\text{m}$  in silicon. The time-resolved measurements are described using simulation. The electric fields have been calculated assuming two effective traps with energy levels, concentrations, and cross-sections taken from the literature [8, 10, 11].

It is found that at the lowest investigated fluence ( $3 \cdot 10^{14} \text{neq/cm}^2$ ) the effective electron trapping rate is compatible with the results presented in ref. [4] using fluences up to  $2.4 \cdot 10^{14} \text{neq/cm}^2$ . However, at higher fluences the extracted trapping rates are a factor of 2–3 below the trapping rates expected if the results from ref. [4] are extrapolated. The effective hole trapping rates are also a factor of up to about 3 below the extrapolations. These results confirm previous studies that found higher signals than expected at high fluences [6–8] and are important for the description of the tracker performances after a few years of operation at the High-Luminosity LHC.

## Acknowledgments

The research leading to these results has received funding from the European Commission under the FP7 Research Infrastructures project AIDA, grant agreement no. 262025. The information herein only reflects the views of its authors and not those of the European Commission and no warranty expressed or implied is made with regard to such information or its use. Support was also provided by the Helmholtz Alliance “Physics at the Terascale” and the German Ministry of Science, BMBF, through the Forschungsschwerpunkt “Particle Physics with the CMS-Experiment”. The measurements presented in this document have been performed at the University of Hamburg.

## References

- [1] ATLAS collaboration, *Letter of Intent for the Phase-II Upgrade of the ATLAS Experiment*, [CERN-LHCC-2012-022](#) (2012).
- [2] CMS collaboration, *Technical Proposal for the Phase-II Upgrade of the Compact Muon Solenoid*, [CERN-LHCC-2015-010](#) (2015).

- [3] M. Moll, *Radiation Damage in Silicon Particle Detectors*, Ph.D. Thesis, University of Hamburg, Hamburg Germany (1999).
- [4] G. Kramberger et al., *Effective trapping time of electrons and holes in different silicon materials irradiated with neutrons, protons and pions*, *Nucl. Instrum. Meth. A* **481** (2002) 297.
- [5] G. Kramberger et al., *Determination of effective trapping times for electrons and holes in irradiated silicon*, *Nucl. Instrum. Meth. A* **476** (2002) 645.
- [6] J. Lange, *Radiation Damage in Proton-Irradiated Epitaxial Silicon Detectors*, MSc Thesis, University of Hamburg, Hamburg Germany, DESY-THESIS-2009-022 (2008).
- [7] T. Pöhlens, *Charge Collection and Space Charge Distribution in Neutron-Irradiated Epitaxial Silicon Detectors*, MSc Thesis, University of Hamburg, Hamburg Germany, DESY-THESIS-2010-013 (2010).
- [8] R. Eber, *Untersuchung neuartiger Sensorkonzepte und Entwicklung eines effektiven Modells der Strahlenschädigung für die Simulation hochbestrahlter Silizium-Teilchendetektoren*, Ph.D. Thesis, Karlsruhe Institut für Technologie (KIT), Karlsruhe Germany, IEKP-KA/2013-27 (2013).
- [9] E. Borchi, M. Bruzzi, Z. Li and S. Pirollo, *A two-level model for heavily irradiated silicon detectors*, *Nucl. Instrum. Meth. A* **425** (1999) 343.
- [10] V. Eremin, Z. Li and E. Verbitskaya, *The origin of double peak electric field distribution in heavily irradiated silicon detectors*, *Nucl. Instrum. Meth. A* **476** (2002) 556.
- [11] M. Swartz et al., *Simulation of Heavily Irradiated Silicon Pixel Detectors*, [physics/0605215](#).
- [12] A. Dierlamm on behalf of the CMS TRACKER collaboration, *CMS HPK sensor characterisation*, [PoS\(Vertex 2012\)016](#).
- [13] G. Steinbrück for the CMS TRACKER collaboration, *Towards Radiation Hard Sensor Materials for the CMS Tracker Upgrade*, [CMS-CR-2012-308](#) (2012).
- [14] T. Poehlsen on behalf of the CMS TRACKER collaboration, *Radiation hard silicon sensors for the CMS tracker upgrade*, [CMS-CR-2013-405](#) (2013).
- [15] T. Poehlsen, *Charge Losses in Silicon Sensors and Electric-Field Studies at the Si-SiO<sub>2</sub> Interface*, Ph.D. Thesis, University of Hamburg, Hamburg Germany, DESY-THESIS-2013-025 (2013).
- [16] J. Erfle, *Irradiation study of different silicon materials for the CMS tracker upgrade*, Ph.D. Thesis, University of Hamburg, Hamburg Germany, DESY-THESIS-2014-010 (2014).
- [17] C. Scharf and R. Klanner, *Determination of the electronics transfer function for current transient measurements*, [arXiv:1407.2761](#).
- [18] M. Swartz, private communication.
- [19] J. Becker, E. Fretwurst and R. Klanner, *Measurements of charge carrier mobilities and drift velocity saturation in bulk silicon of  $\langle 111 \rangle$  and  $\langle 100 \rangle$  crystal orientation at high electric fields*, *Solid State Electron.* **56** (2011) 104.

## **Tracker group of the CMS collaboration**

### **Institut für Hochenergiephysik der Österreichischen Akademie der Wissenschaften (HEPHY), Vienna, Austria**

W. Adam, T. Bergauer, M. Dragicevic, M. Friedl, R. Fruehwirth, M. Hoch, J. Hrubec, M. Krammer, W. Treberspurg, W. Waltenberger

### **Universiteit Antwerpen, Belgium**

S. Alderweireldt, W. Beaumont, X. Janssen, S. Luyckx, P. Van Mechelen, N. Van Remortel, A. Van Spilbeeck

### **Brussels-ULB, Belgium**

P. Barria, C. Caillol, B. Clerbaux, G. De Lentdecker, D. Dobur, L. Favart, A. Grebenyuk, Th. Lenzi, A. Léonard, Th. Maerschalk, A. Mohammadi, L. Perniè, A. Randle-Conde, T. Reis, T. Seva, L. Thomas, C. Vander Velde, P. Vanlaer, J. Wang, F. Zenoni

### **Brussels-VUB, Belgium**

S. Abu Zeid, F. Blekman, I. De Bruyn, J. D'Hondt, N. Daci, K. Deroover, N. Heracleous, J. Keaveney, S. Lowette, L. Moreels, A. Olbrechts, Q. Python, S. Tavernier, P. Van Mulders, G. Van Onsem, I. Van Parijs, D.A. Strom

### **CP3/IRMP - Université catholique de Louvain - Louvain-la-Neuve – Belgium**

S. Basegmez, G. Bruno, R. Castello, A. Caudron, L. Ceard, B. De Callatay, C. Delaere, T. Du Pree, L. Forthomme, A. Giammanco, J. Hollar, P. Jez, D. Michotte, C. Nuttens, L. Perrini, D. Pagano, L. Quertenmont, M. Selvaggi, M. Vidal Marono

### **University of Mons, Belgium**

N. Belyi, T. Caebegs, E. Daubie, G.H. Hammad

### **Helsinki Institute of Physics, Finland**

J. Härkönen, T. Lampén, P.-R. Luukka, T. Mäenpää, T. Peltola, E. Tuominen, E. Tuovinen

### **University of Helsinki and Helsinki Institute of Physics, Finland**

P. Eerola

### **Lappeenranta University of Technology, Lappeenranta, Finland**

T. Tuuva

### **Université de Lyon, Université Claude Bernard Lyon 1, CNRS/IN2P3, Institut de Physique Nucléaire de Lyon, France**

G. Beaulieu, G. Boudoul, C. Combaret, D. Contardo, G. Gallbit, N. Lumb, H. Mathez, L. Mirabito, S. Perries, D. Sabes, M. Vander Donckt, P. Verdier, S. Viret, Y. Zoccarato

### **Groupe de Recherches en Physique des Hautes Energies, Université de Haute Alsace, Mulhouse, France**

J.-L. Agram, E. Conte, J.-Ch. Fontaine

**Institut Pluridisciplinaire Hubert Curien, Université de Strasbourg, IN2P3-CNRS, Strasbourg, France**

J. Andrea, D. Bloch, C. Bonnin, J.-M. Brom, E. Chabert, L. Charles, Ch. Goetzmann, L. Gross, J. Hosselet, C. Mathieu, M. Richer, K. Skovpen

**I. Physikalisches Institut, RWTH Aachen University, Germany**

C. Pistone, G. Fluegge, A. Kuensken, M. Geisler, O. Pooth, A. Stahl

**III. Physikalisches Institut, RWTH Aachen University, Germany**

C. Autermann, M. Edelhoff, H. Esser, L. Feld, W. Karpinski, K. Klein, M. Lipinski, A. Ostapchuk, G. Pierschel, M. Preuten, F. Raupach, J. Sammet, S. Schael, G. Schwering, B. Wittmer, M. Wlochal, V. Zhukov

**DESY, Hamburg, Germany**

N. Bartosik, J. Behr, A. Burgmeier, L. Calligaris, G. Dolinska, G. Eckerlin, D. Eckstein, T. Eichhorn, G. Fluke, J. Garay Garcia, A. Gizhko, K. Hansen, A. Harb, J. Hauk, A. Kalogeropoulos, C. Kleinwort, I. Korol, W. Lange, W. Lohmann, R. Mankel, H. Maser, G. Mittag, C. Muhl, A. Mussgiller, A. Nayak, E. Ntomari, H. Perrey, D. Pitzl, M. Schroeder, C. Seitz, S. Spannagel, A. Zuber

**University of Hamburg, Germany**

H. Biskop, V. Blobel, P. Buhmann, M. Centis-Vignali, A.-R. Draeger, J. Erfle, E. Garutti, J. Haller, M. Hoffmann, A. Junkes, T. Lapsien, S. Mättig, M. Matysek, A. Perieanu, J. Poehlsen, T. Poehlsen, Ch. Scharf, P. Schleper, A. Schmidt, V. Sola, G. Steinbrück, J. Wellhausen

**Karlsruhe-IEKP, Germany**

T. Barvich, Ch. Barth, F. Boegelspacher, W. De Boer, E. Butz, M. Casele, F. Colombo, A. Dierlamm, R. Eber, B. Freund, F. Hartmann<sup>1</sup>, Th. Hauth, S. Heindl, K.-H. Hoffmann, U. Husemann, A. Kornmeyer, S. Mallows, Th. Muller, A. Nuernberg, M. Printz, H. J. Simonis, P. Steck, M. Weber, Th. Weiler

**Department of Physics and Astrophysics, University of Delhi, Delhi, India**

A. Bhardwaj, A. Kumar, A. Kumar, K. Ranjan

**Institute for Research in Fundamental Sciences (IPM), Tehran, Iran**

H. Bakhshiansohl, H. Behnamian, M. Khakzad, M. Naseri

**INFN Bari, Italy**

P. Cariola, G. De Robertis, L. Fiore, M. Franco, F. Loddo, G. Sala, L. Silvestris

**INFN and Dipartimento Interateneo di Fisica, Bari, Italy**

D. Creanza, M. De Palma, G. Maggi, S. My, G. Selvaggi

**INFN and University of CATANIA, Italy**

S. Albergo, G. Cappello, M. Chiorboli, S. Costa, F. Giordano, A. Di Mattia, R. Potenza, M.A. Saizu<sup>2</sup>, A. Tricomi, C. Tuvè

**INFN Firenze, Italy**

G. Barbagli, M. Brianzi, R. Ciaranfi, C. Civinini, E. Gallo, M. Meschini, S. Paoletti, G. Sguazzoni

**INFN and University of Firenze, Italy**

V. Ciulli, R. D'Alessandro, S. Gonzi, V. Gori, E. Focardi, P. Lenzi, E. Scarlini, A. Tropiano,  
L. Viliani

**INFN Genova, Italy**

F. Ferro, E. Robutti

**INFN and University of Genova, Italy**

M. Lo Vetere

**INFN Milano-Bicocca, Italy**

S. Gennai, S. Malvezzi, D. Menasce, L. Moroni, D. Pedrini

**INFN and Università degli Studi di Milano-Bicocca, Italy**

M. Dinardo, S. Fiorendi, R.A. Manzoni

**INFN Padova, Italy**

P. Azzi, N. Bacchetta

**INFN and University of Padova, Italy**

D. Bisello, M. Dall'Osso, T. Dorigo, P. Giubilato, N. Pozzobon, M. Tosi, A. Zucchetta

**INFN Pavia and University of Bergamo, Italy**

F. De Canio, L. Gaioni, M. Manghisoni, B. Nodari, V. Re, G. Traversi

**INFN Pavia and University of Pavia, Italy**

D. Comotti, L. Ratti

**INFN Perugia, Italy**

G. M. Bilei, L. Bissi, B. Checcucci, D. Magalotti<sup>3</sup>, M. Menichelli, A. Saha, L. Servoli, L. Storchi

**INFN and University of Perugia, Italy**

M. Biasini, E. Conti, D. Ciangottini, L. Fanò, P. Lariccia, G. Mantovani, D. Passeri, P. Placidi,  
M. Salvatore, A. Santocchia, L.A. Solestizi, A. Spiezia

**INFN Pisa, Italy**

K. Androso<sup>4</sup>, P. Azzurri, S. Arezzini, G. Bagliesi, A. Basti, T. Boccali, F. Bosi, R. Castaldi,  
A. Ciampa, M. A. Ciocci<sup>4</sup>, R. Dell'Orso, G. Fedi, A. Giassi, M. T. Grippo<sup>4</sup>, T. Lomtadze,  
G. Magazzu, E. Mazzoni, M. Minuti, A. Moggi, C. S. Moon<sup>4</sup>, F. Morsani, F. Palla, F. Palmonari,  
F. Raffaelli, A. Savoy-Navarro<sup>5</sup>, A.T. Serban<sup>6</sup>, P. Spagnolo, R. Tenchini, A. Venturi, P.G. Verdini

**University of Pisa and INFN Pisa, Italy**

L. Martini, A. Messineo, A. Rizzi, G. Tonelli

**Scuola Normale Superiore di Pisa and INFN Pisa, Italy**

F. Calzolari, S. Donato, F. Fiori, F. Ligabue, C. Vernieri

**INFN Torino, Italy**

N. Demaria, A. Rivetti



**INFN and University of Torino, Italy**

R. Bellan, S. Casasso, M. Costa, R. Covarelli, E. Migliore, E. Monteil, M. Musich, L. Pacher, F. Ravera, A. Romero, A. Solano, P. Trapani

**Instituto de Física de Cantabria (IFCA), CSIC-Universidad de Cantabria, Santander, Spain**

R. Jaramillo Echeverria, M. Fernandez, G. Gomez, D. Moya, F.J. Gonzalez Sanchez, F.J. Munoz Sanchez, I. Vila, A.L. Virto

**European Organization for Nuclear Research (CERN), Geneva, Switzerland**

D. Abbaneo, I. Ahmed, E. Albert, G. Auzinger, G. Berruti, G. Bianchi, G. Blanchot, H. Breuker, D. Ceresa, J. Christiansen, K. Cichy, J. Daguin, M. D'Alfonso, A. D'Auria, S. Detraz, S. De Visscher, D. Deyrail, F. Faccio, D. Felici, N. Frank, K. Gill, D. Giordano, P. Harris, A. Honma, J. Kaplon, A. Kornmayer, L. Kottelat, M. Kovacs, M. Mannelli, A. Marchioro, S. Marconi, S. Martina, S. Mersi, S. Michelis, M. Moll, A. Onnela, T. Pakulski, S. Pavis, A. Peisert, J.-F. Pernot, P. Petagna, G. Petrucciani, H. Postema, P. Rose, M. Rzonca, M. Stoye, P. Tropea, J. Troska, A. Tsirou, F. Vasey, P. Vichoudis, B. Verlaat, L. Zwalinski

**ETH Zürich, Zürich, Switzerland**

F. Bachmair, R. Becker, L. Bäni, D. di Calafiori, B. Casal, L. Djambazov, M. Donega, M. Dünser, P. Eller, C. Grab, D. Hits, U. Horisberger, J. Hoss, G. Kasieczka, W. Lustermann, B. Mangano, M. Marionneau, P. Martinez Ruiz del Arbol, M. Masciovecchio, L. Perrozzi, U. Roeser, M. Rossini, A. Starodumov, M. Takahashi, R. Wallny

**University of Zürich, Switzerland**

C. AMSLER<sup>7</sup>, K. Bösiger, L. Caminada, F. Canelli, V. Chiochia, A. de Cosa, C. Galloni, T. Hreus, B. Kilminster, C. Lange, R. Maier, J. Ngadiuba, D. Pinna, P. Robmann, S. Taroni, Y. Yang

**Paul Scherrer Institut, Villigen, Switzerland**

W. Bertl, K. Deiters, W. Erdmann, R. Horisberger, H.-C. Kaestli, D. Kotlinski, U. Langenegger, B. Meier, T. Rohe, S. Streuli

**National Taiwan University, Taiwan, ROC**

P.-H. Chen, C. Dietz, U. Grundler, W.-S. Hou, R.-S. Lu, M. Moya, R. Wilken

**University of Bristol, Bristol, United Kingdom**

D. Cussans, H. Flacher, J. Goldstein, M. Grimes, J. Jacob, S. Seif El Nasr-Storey

**Brunel University, Uxbridge, United Kingdom**

J. Cole, P. Hobson, D. Leggat, I. D. Reid, L. Teodorescu

**Imperial College, London, United Kingdom**

R. Bainbridge, P. Dauncey, J. Fulcher, G. Hall, A.-M. Magnan, M. Pesaresi, D. M. Raymond, K. Uchida

**STFC, Rutherford Appleton Laboratory, Chilton, Didcot, United Kingdom**

J.A. Coughlan, K. Harder, J. Ilic, I.R. Tomalin

**Brown University, Providence, Rhode Island, USA**

A. Garabedian, U. Heintz, M. Narain, J. Nelson, S. Sagir, T. Speer, J. Swanson, D. Tersegno, J. Watson-Daniels

**University of California, Davis, California, USA**

M. Chertok, J. Conway, R. Conway, C. Flores, R. Lander, D. Pellett, F. Ricci-Tam, M. Squires, J. Thomson, R. Yohay

**University of California, Riverside, California, USA**

K. Burt, J. Ellison, G. Hanson, M. Malberti, M. Olmedo

**University of California, San Diego, California, USA**

G. Cerati, V. Sharma, A. Vartak, A. Yagil, G. Zevi Della Porta

**University of California, Santa Barbara, California, USA**

V. Dutta, L. Gouskos, J. Incandela, S. Kyre, N. McColl, S. Mullin, D. White

**University of Colorado, Boulder, Colorado, USA**

J.P. Cumalat, W.T. Ford, A. Gaz, M. Krohn, K. Stenson, S.R. Wagner

**Fermi National Accelerator Laboratory (FNAL), Batavia, Illinois, USA**

B. Baldin, G. Bolla, K. Burkett, J. Butler, H. Cheung, J. Chramowicz, D. Christian, W.E. Cooper, G. Deptuch, G. Derylo, C. Gingu, S. Gruenendahl, S. Hasegawa, J. Hoff, J. Howell, M. Hrycyk, S. Jindariani, M. Johnson, A. Jung, U. Joshi, F. Kahlid, C. M. Lei, R. Lipton, T. Liu, S. Los, M. Matulik, P. Merkel, S. Nahn, A. Prosser, R. Rivera, A. Shenai, L. Spiegel, N. Tran, L. Uplegger, E. Voirin, H. Yin

**University of Illinois, Chicago, Illinois, USA**

M.R. Adams, D.R. Berry, A. Evdokimov, O. Evdokimov, C.E. Gerber, D.J. Hofman, B.K. Kapustka, C. O'Brien, D.I. Sandoval Gonzalez, H. Trauger, P. Turner

**Purdue University Calumet, Hammond, Indiana, USA**

N. Parashar, J. Stupak, III

**Purdue University, West Lafayette, Indiana, USA**

D. Bortoletto, M. Bubna, N. Hinton, M. Jones, D.H. Miller, X. Shi

**University of Iowa, Iowa City, Iowa, USA**

P. Tan

**University of Kansas, Lawrence, Kansas, USA**

P. Baringer, A. Bean, G. Benelli, J. Gray, D. Majumder, D. Noonan, S. Sanders, R. Stringer

**Kansas State University, Manhattan, Kansas, USA**

A. Ivanov, M. Makouski, N. Skhirtladze, R. Taylor

**Johns Hopkins University, Baltimore, Maryland, USA**

I. Anderson, D. Fehling, A. Gritsan, P. Maksimovic, C. Martin, K. Nash, M. Osherson, M. Swartz, M. Xiao

**University of Mississippi, Mississippi, USA**

J.G. Acosta, L.M. Cremaldi, S. Oliveros, L. Perera, D. Summers

**University of Nebraska, Lincoln, Nebraska, USA**

K. Bloom, S. Bose, D.R. Claes, A. Dominguez, C. Fangmeier, R. Gonzalez Suarez, F. Meier, J. Monroy

**Northwestern University, Evanston, Illinois, USA**

K. Hahn, S. Sevova, K. Sung, M. Trovato

**Rutgers University, Piscataway, New Jersey, USA**

E. Bartz, D. Duggan, E. Halkiadakis, A. Lath, M. Park, S. Schnetzer, R. Stone, M. Walker

**University of Puerto Rico, Mayaguez, Puerto Rico, USA**

S. Malik, H. Mendez, J.E. Ramirez Vargas

**State University of New York, Buffalo, New York, USA**

M. Alyari, J. Dolen, J. George, A. Godshalk, I. Iashvili, J. Kaisen, A. Kharchilava, A. Kumar, S. Rappoccio

**Cornell University, Ithaca, New York, USA**

J. Alexander, J. Chaves, J. Chu, S. Dittmer, G. Kaufman, N. Mirman, A. Ryd, E. Salvati, L. Skinnari, J. Thom, J. Thompson, J. Tucker, L. Winstrom

**Rice University, Houston, Texas, USA**

B. Akgün, K.M. Ecklund, T. Nussbaum, J. Zabel

**University of Rochester, New York, USA**

B. Betchart, R. Covarelli, R. Demina, O. Hindrichs, G. Petrillo

**Texas A&M University, College Station, Texas, USA**

R. Eusebi, I. Osipenkov, A. Perloff, K.A. Ulmer

**Vanderbilt University, Nashville, Tennessee, USA**

A. G. Delannoy, P. D'Angelo, W. Johns

- 1: Also at CERN, European Organization for Nuclear Research, Geneva, Switzerland
- 2: Also at Horia Hulubei National Institute of Physics and Nuclear Engineering (IFIN-HH), Bucharest, Romania
- 3: Also at Modena and Reggio Emilia University, Italy
- 4: Also at University of Siena, Italy
- 5: Also at CNRS-IN2P3, Paris, France
- 6: Also at University of Bucharest, Bucharest, Romania
- 7: Now at University of Bern, Switzerland