

STUDIA ASIANA

- 10 -

STUDIA ASIANA

Collana fondata da Alfonso Archi, Onofrio Carruba e Franca Pecchioli Daddi

Comitato Scientifico

Alfonso Archi, Fondazione OrMe – Oriente Mediterraneo

Amalia Catagnoli, Università degli Studi di Firenze

Anacleto D'Agostino, Università di Pisa

Rita Francia, Sapienza – Università di Roma

Gianni Marchesi, Alma Mater Studiorum – Università di Bologna

Stefania Mazzoni, Università degli Studi di Firenze

Valentina Orsi, Università degli Studi di Firenze

Marina Pucci, Università degli Studi di Firenze

Elena Rova, Università Ca' Foscari – Venezia

Giulia Torri, Università degli Studi di Firenze

The Uşaklı Höyük Survey Project (2008-2012)

A final report

Edited by
STEFANIA MAZZONI, FRANCA PECCHIOLI DADDI

FIRENZE UNIVERSITY PRESS

2015

The Uşaklı Höyük Survey Project (2008-2012) : a final report /
edited by Stefania Mazzoni, Franca Pecchioli Daddi. – Firenze
: Firenze University Press, 2015.
(Studia Asiana ; 10)

<http://digital.casalini.it/9788866559023>

ISBN 978-88-6655-901-6 (print)
ISBN 978-88-6655-902-3 (online)

Graphic design: Alberto Pizarro Fernández, Pagina Maestra
Front cover photo: View of Uşaklı Höyük, from North (August 2009)

The volume was published with the contribution of *Ente Cassa di Risparmio di Firenze*.



P. Watson edited the English text, N. Birgen translated the summaries in Turkish

Picture and illustration credits

The pictures of sites, landscapes, objects and sherds in plates 1-4, 8-43 were taken by A. D'Agostino a part Pl. 3.1a, 3.2, and 13.5 taken by S. Mazzoni, Pl. 3.3 taken by F. and G. Summers Pl. 42 and 43.1 taken by S. Martelli; those in plates 5-7 were taken by R. Salvini.

Line drawings of ceramic sherds and objects are by S. Martelli.

Illustrations, graphic visualization and GIS data processing concerning the collecting units, scattering of sherds and archaeological materials have been drawn by S. Bernardoni and R. Trojanis – Studio KULLA (studiokulla.com); the topographic plan used in those visualizations has been realised by E. Mariotti, the geophysics plots by G. Carpentiero; A. D'Agostino and V. Orsi have elaborated the ceramics database.

Composition of all plates and figures of the volume are by A. D'Agostino.

Peer Review Process

All publications are submitted to an external refereeing process under the responsibility of the FUP Editorial Board and the Scientific Committees of the individual series. The works published in the FUP catalogue are evaluated and approved by the Editorial Board of the publishing house. For a more detailed description of the refereeing process we refer to the official documents published on the website and in the online catalogue of the FUP (www.fupress.com).

Firenze University Press Editorial Board

G. Nigro (Co-ordinator), M.T. Bartoli, M. Boddi, R. Casalbuoni, C. Ciappei, R. Del Punta, A. Dolfi, V. Fargion, S. Ferrone, M. Garzaniti, P. Guarnieri, A. Mariani, M. Marini, A. Novelli, M.C. Torricelli, M. Verga, A. Zorzi.

This work is licensed under a Creative Commons Attribution 4.0 International License
(CC BY 4.0: <http://creativecommons.org/licenses/by/4.0/legalcode>).

CC 2015 Firenze University Press
Università degli Studi di Firenze
Firenze University Press
Borgo degli Albizi, 28 50122
www.fupress.com
Printed in Italy

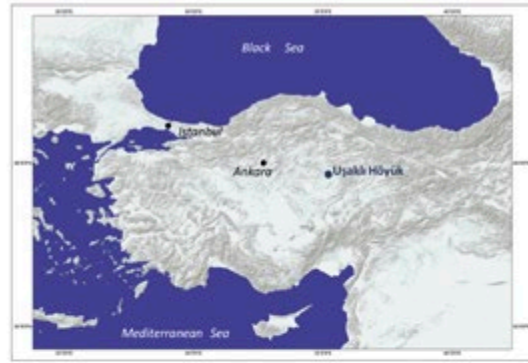
CONTENTS

PREFACE	IX
<i>Stefania Mazzoni</i>	
UŞAKLI HÖYÜK AND ITS HINTERLAND THE 2008-2012 SURVEY	1
<i>Stefania Mazzoni</i>	
1. Introduction: methodology and programme of the 2008-2012 operations	2
2. The name of the site	3
3. Uşaklı Höyük and its hinterland	3
3.1 The setting: the river and the plain	3
3.2 The survey in the territory	4
3.2.1 The southern sector	4
3.2.2 The northern sector	5
3.3 Descriptive list of sites and archaeological features	5
4. Surveying the site	6
4.1 Morphology and surface features	6
4.2 The geophysical survey	7
4.3 Interpreting the buried structures	8
5. First explorations on the site	9
6. The settlement and its historical context	10
References	12
Figures	15
FIRST RESULTS FROM TOPOGRAPHIC AND GEOLOGICAL MAPPING IN THE AREA OF UŞAKLI HÖYÜK	19
<i>Riccardo Salvini, Maria Cristina Salvi, Alice Cartocci, Eleonora Magnani</i>	
1. Introduction	19
2. Materials and Methods	21
2.1 GPS survey	21
2.2 Images orientation and stereorestitution	21
2.3 Production of digital terrain model and orthoimages	22
2.4 Topographic mapping	22
2.5 Preliminary geological mapping	22
3. Results and discussion	22
4. Conclusions	23
Acknowledgements	24
References	24
INFORMATION FROM THE SURFACE. TOPOGRAPHICAL SURVEY AT UŞAKLI HÖYÜK	29
<i>Emanuele Mariotti</i>	
1. Foreword	29
2. The topographic survey at Uşaklı Höyük	30
2.1 Methodology and purposes	30
References	31
Figures	32

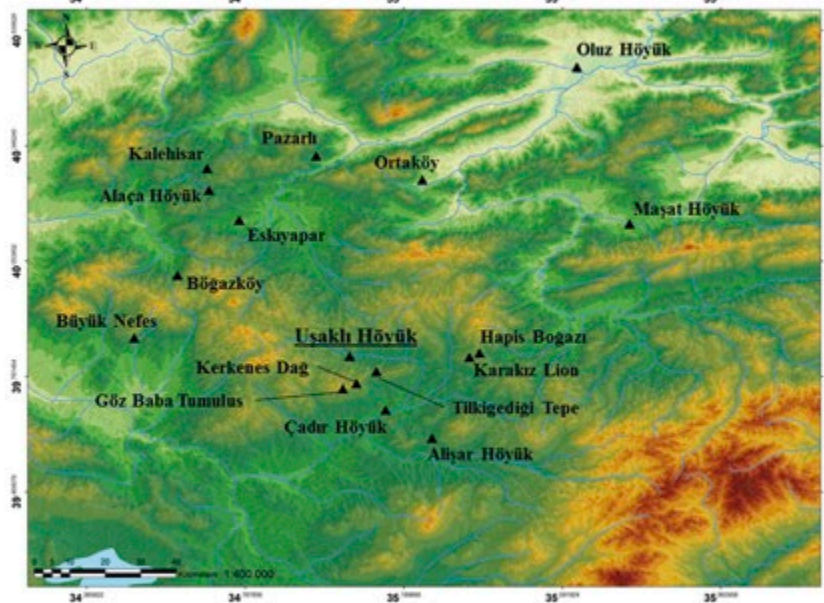
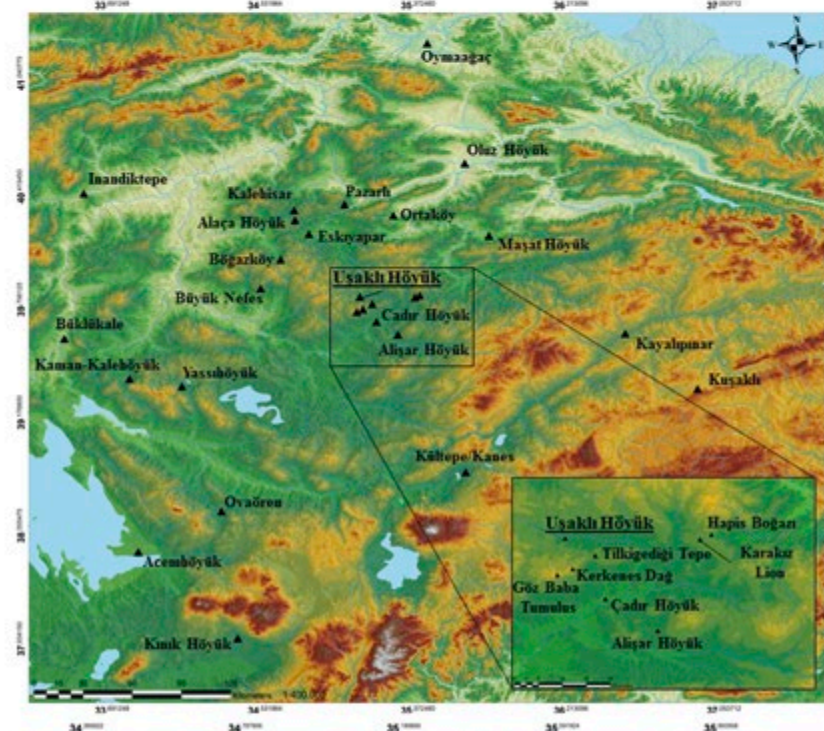
THE ARCHAEOLOGICAL SURVEY: METHODS AND MATERIALS	35
<i>Anacleto D'Agostino, Valentina Orsi</i> (with the collaboration of Guido della Lena Guidiccioni)	
1. Introduction	36
2. Uşaklı Höyük	37
2.1 Methodology and activities	37
2.1.1 Surface collecting	37
2.1.2 Surface scraping on the slope of the high mound	39
2.1.3 Test soundings on the mound	40
2.2 The pottery assemblage	41
2.2.1 The Pottery analysis	42
2.2.1. ₁ Function	43
2.2.1. ₂ Morphology	43
2.2.1. ₃ Technology	46
2.2.2 Fabrics	48
2.2.3 Wares	58
2.2.3. ₁ Brown Burnished Ware [Bb]	59
2.2.3. ₂ Coarse Grained Ware [Cg]	60
2.2.3. ₃ Drab Ware [D]	61
2.2.3. ₄ Glazed Ware [Gl]	64
2.2.3. ₅ Gold Wash Ware [Gw]	65
2.2.3. ₆ Grey Ware [G] [Gp] [Gr]	66
2.2.3. ₇ Kitchen Ware [K]	67
2.2.3. ₈ Orange Slip Ware – [Os]	68
2.2.3. ₉ Orange Fine Ware [O]	69
2.2.3. ₁₀ Painted Wares	70
2.2.3. ₁₁ Pink Slip Ware [Ps]	81
2.2.3. ₁₂ Plain Ware [P]	81
2.2.3. ₁₃ Pseudo-Brittle Ware [Br]	82
2.2.3. ₁₄ Red Slip Ware [Rs]	83
2.2.3. ₁₅ Reddish Brown Ware [Rb]	91
2.2.3. ₁₆ Yellow Slip Ware [Ys]	91
2.2.3. ₁₇ Handmade wares	92
2.2.3. ₁₈ Other sites	96
2.2.4 The typology	98
2.2.4. ₁ Ceramic Classification Codes	98
2.2.4. ₂ Morphological types	99
2.2.4. ₃ Other morphological components	160
2.2.5 Comparisons and tentative dating	166
2.2.5. ₁ The earlier phases of occupation: from the faint traces of Late Chalcolithic to evidence of the Early Bronze Age/Middle Bronze Age transition	166
2.2.5. ₂ The 2 nd millennium BC occupation, between the karum and Hittite periods	169
2.2.5. ₃ The Iron Age occupation	174
2.2.5. ₄ The Later Periods: from the second half of 1 st millennium BC to the modern occupation	177
2.3 Small objects and other finds	180
2.4 Scatters of sherds and other materials	182
3. Other noteworthy identified sites: survey methods and findings	184
3.1 Taşlık Höyük (site no. 3)	185
3.2 Aşağı Karakaya Höyük (site no. 9)	186
4. Concluding remarks	188
References	190

General Charts of materials recovered on the site of Uşaklı Höyük	195
List of Diagrams	199
List of Schemes	200
List of Charts	200
Catalogue of Plates	201
Figures	213
BULLA WITH ANATOLIAN HIEROGLYPHS	345
<i>Massimo Poetto</i>	
References	346
Figures	348
EPIGRAPHIC FINDINGS	349
<i>Alfonso Archi, Carlo Corti, Franca Pecchioli Daddi, Giulia Torri</i>	
1. Tablet UK09.E.2	350
2. Tablet UK12.E.3	351
3. Tablet UK12.E.4	352
4. Tablet UK12.E.5	352
5. Tablet UK14.E.3	352
6. Tablet UK15.E.62	353
7. KBo 52.280	353
References	356
Figures and copies	357
EPIGRAPHIC EVIDENCE ABOUT ZIPPALANDA	365
<i>Giulia Torri</i>	
References	366
GENERAL BIBLIOGRAPHY ON UŞAKLI HÖYÜK	369
SURVEY EXPEDITION TEAM MEMBERS (2008-2012)	373
PLATES	375
CONTRIBUTORS	421

PLATES



(by R. Salvini)



(by M. Raccidi)

Maps of the Central Anatolian Plateau.

Plate 2



from North-North-West



from North



from South-East



from East-South-East



from West-North-West



from North-West



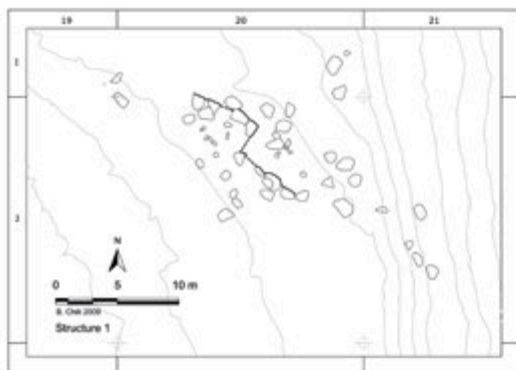
1a – Granitic blocks at the foot of the terrace.
(ESE slope)



1b – The granitic block on the western edge of the terrace.



2 – The granitic stones on the eastern edge of the terrace.



3 – Plan of the stones on the eastern edge of the terrace.



4 – Uşaklı Höyük, picture taken from the blimp.
The granitic stones are visible on the limit of the terrace
(by G. e F. Summers, Kerkenes Project, 1994).

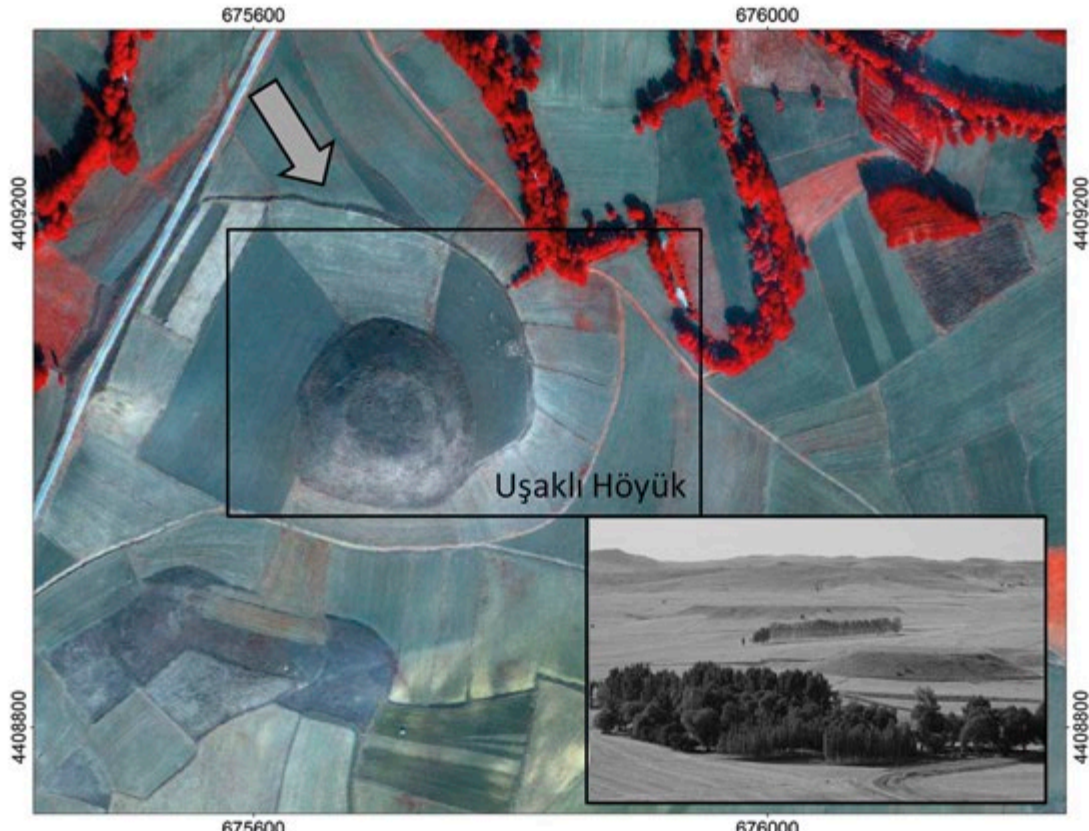


5 – The stones partially still in place, from South-East
(summer 2009).



6 – The stones removed by the landowner and piled up
(2012).

Plate 4



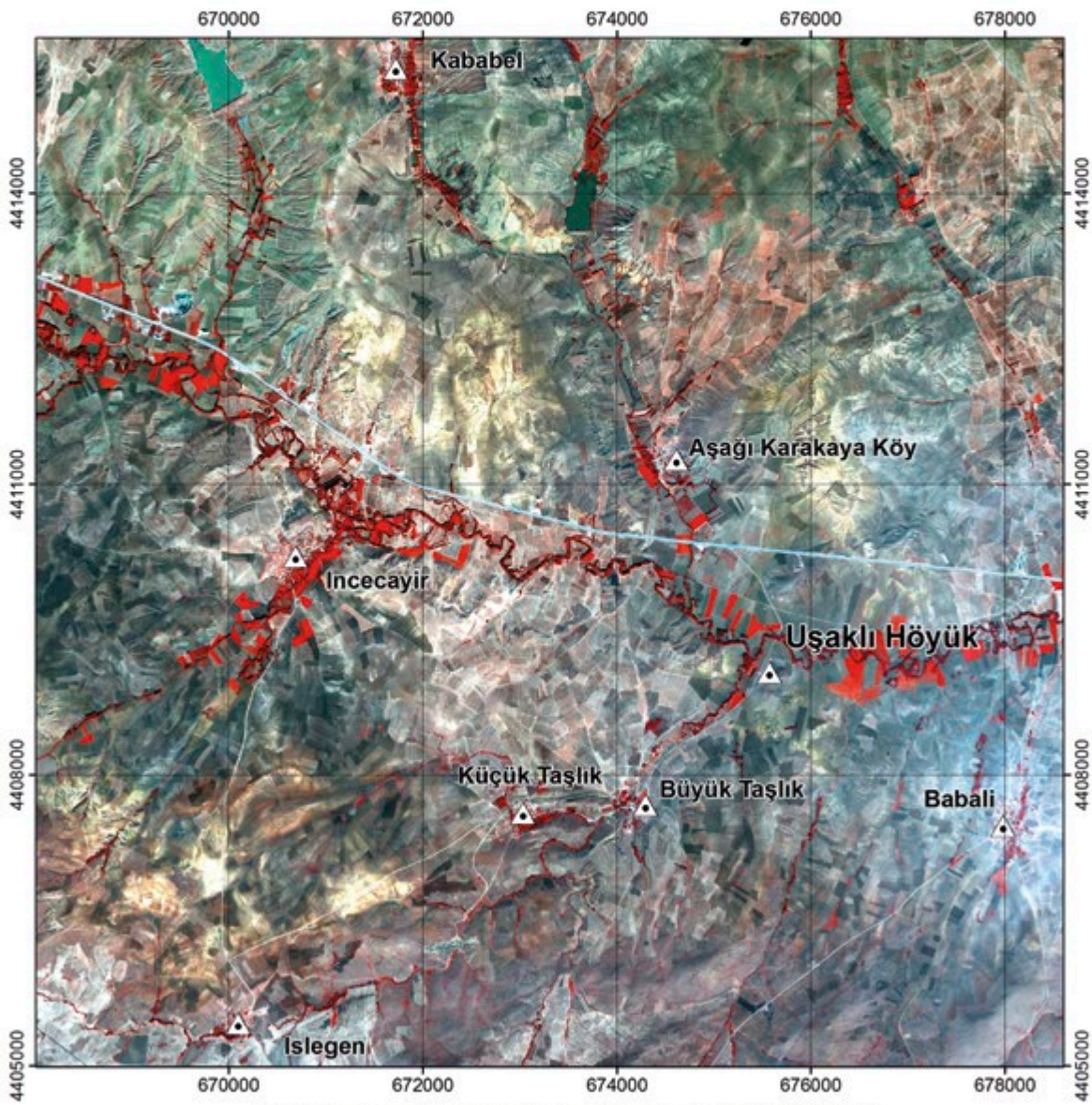
1 – Uşaklı Höyük showed in the GeoEye-1 satellite imagery (FCC 421 RGB). The grey arrow shows the direction of acquisition of the panoramic BW picture.



2 – Mountain chains and massifs of the Eastern Mediterranean: the Central Anatolian Crystalline Complex (CACC).

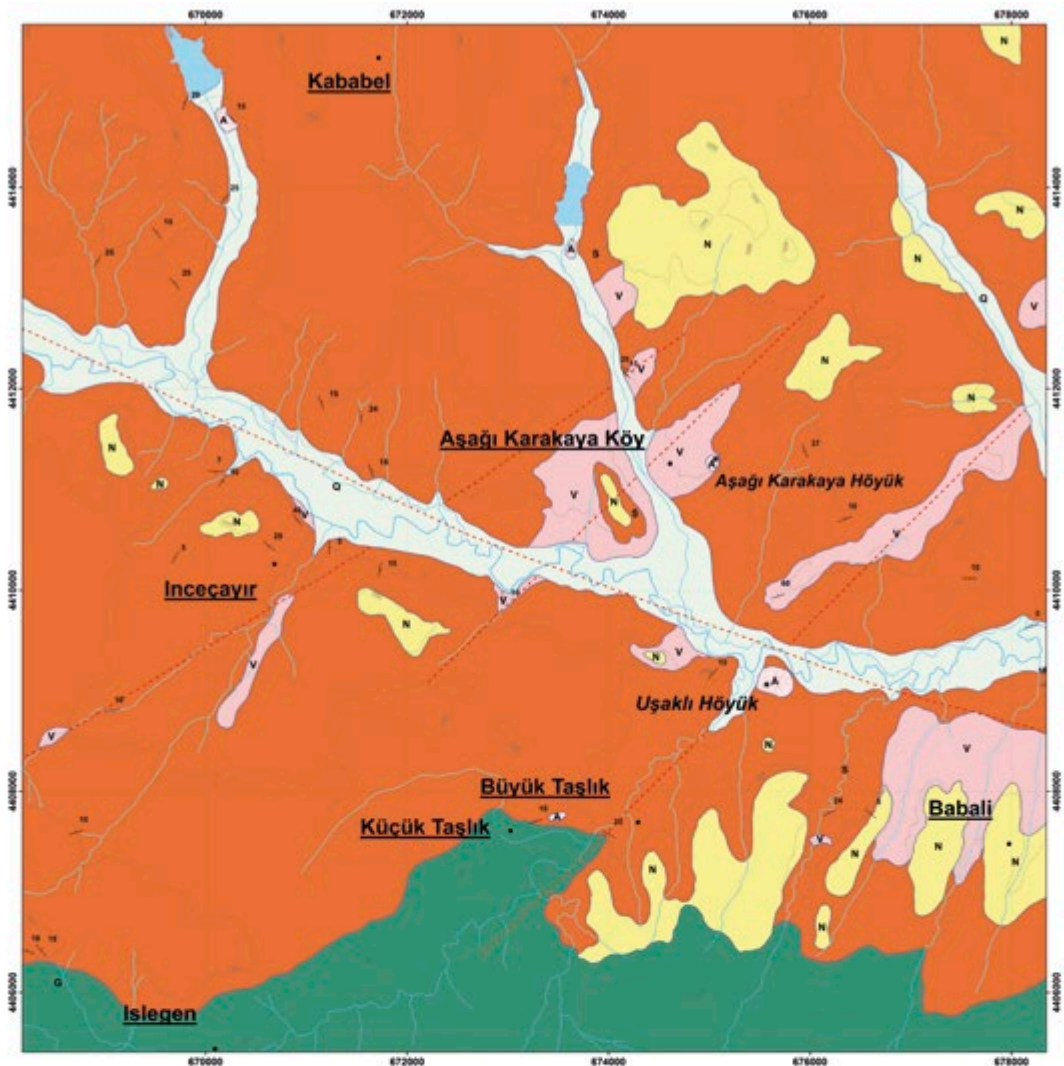


1 – Differential GPS survey: Static modality (left) and Real Time Kinematic (right).



2 – Orthoimagery of the whole study area (from GeoEye-1, FCC 421 RGB).

Plate 6



1 – Preliminary geological map of the study area; Anthropogenic debris (A), Quaternary alluvial deposits (Q), İç Anadolu Group (N), Alimpinar Volcanic Member (V), Boğazköy Formation (S), Granitoids of the CACC (G). Red dashed line represent uncertain fractures.



2 – Outcrop of granitic rocks S of Babalı (above) and detailed photo of a sample collected near Büyük Taşlık (below)



3 – Limestones with nummulites outcropping S of Kababel (a-b); outcrop of conglomerate near Incecaayır (c).



1 – Sandy limestones outcropping N of Küçük Taşlık (a); outcrop of marls E of Inceçayir (b).



2 – Outcrop of basalts with prismatic structure N of Babalı (top); pillow lavas outcropping NW of Babalı (bottom).



3 – Outcrop of olistoliths N of Uşaklı Höyük



4 – Outcrop of unconsolidated conglomerates with underlying sands and clays NW of Babalı.

Plate 8



a-i – Uşaklı Höyük: surveyors at work.



1-9 – Removal of the superficial layer of grasses and earth.

Plate 10

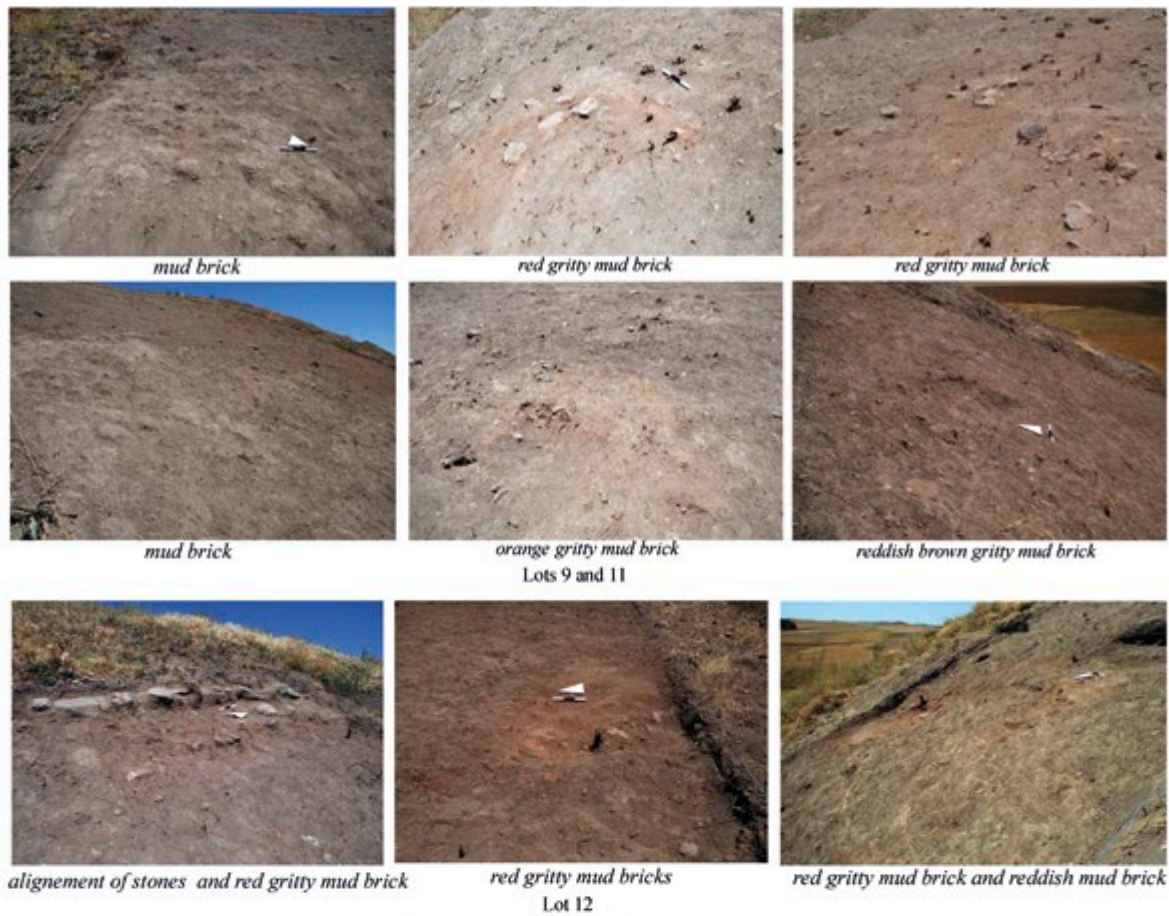


1-3 – Removal of the superficial layer of grasses and earth;

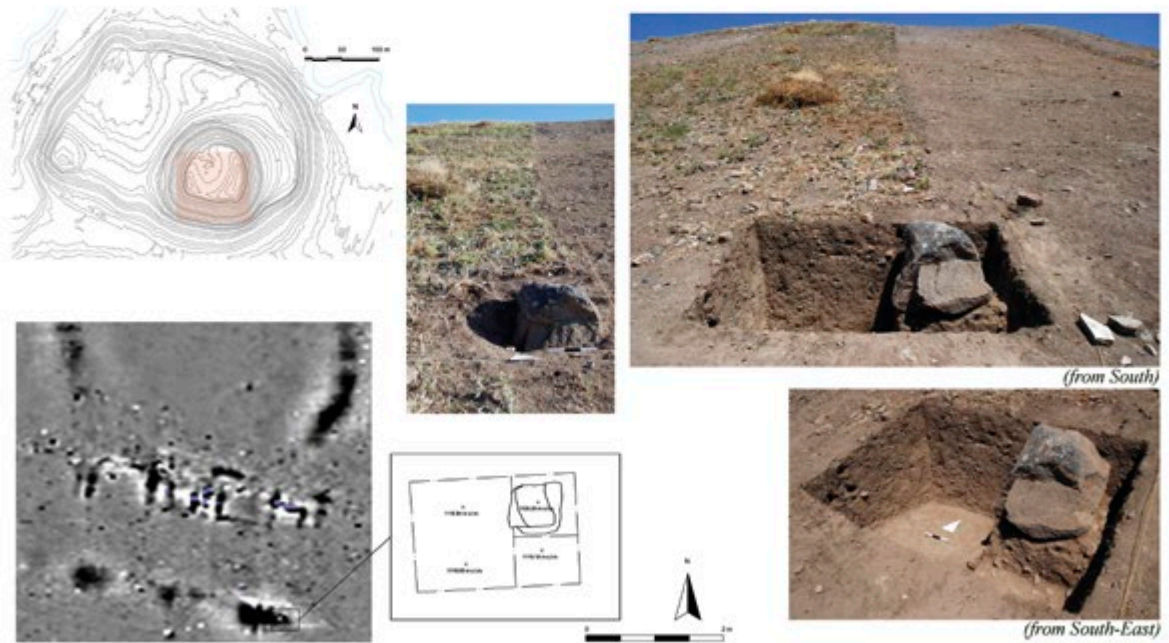
4 – The southern slope before the scraping;

5-6 – Scraping of the eastern slope

Plate 11



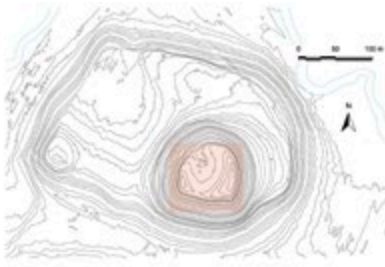
1 – Different kind of soils emerging on the surface of the slope after the scraping activity.



Location of Operation 2 and the plot with geomagnetic anomalies at the foot of the mound.

2 – Operation 2.

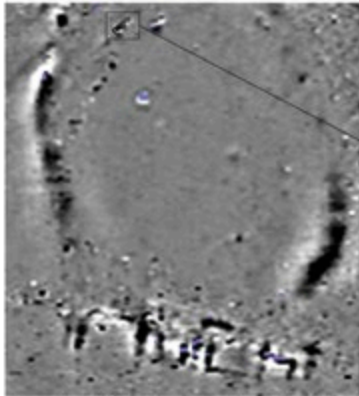
Plate 12



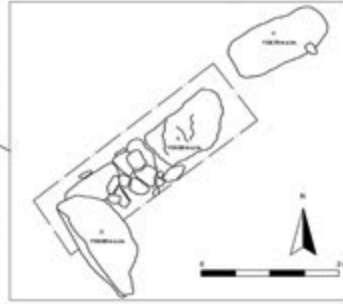
(from South-West)



(from North-West)



Location of Operation 1 and the plot with geomagnetic anomalies on the top of the mound.



(from North-East)



(from North-East)



Views of Operation 1.



Sherds and tiles from the superficial layer.

1 – Operation 1.



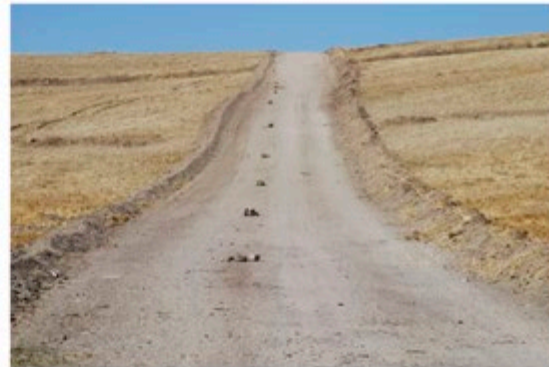
1 – Site 2: concentration of sherds, tiles and stones



2 – Site 4: stones and earth embankment



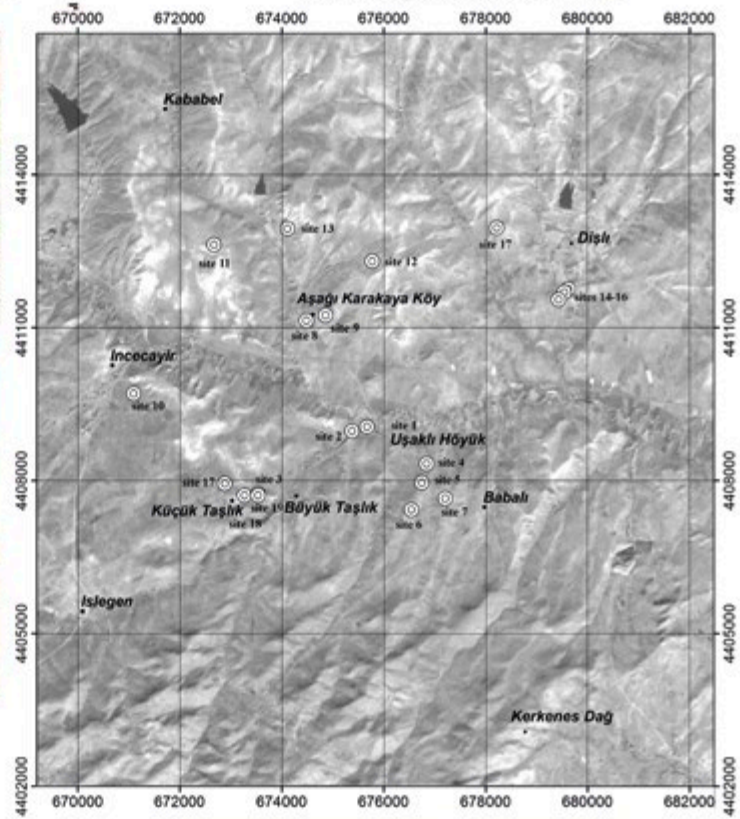
3 – Site 5: sparse evidence of sherds



4 – Site 6: sparse evidence of sherds



5a-b – Site 8: Hittite block and capital kept in the garden of the Mosque of Aşağı Karakaya Köy



6 – Identified sites and villages around Uşaklı Höyük.
(graphic by R. Salvini)

Plate 14



a – Site 3, Taşlık Höyük.



b – Site 9, the höyük next to Aşağı Karakaya Köyü.

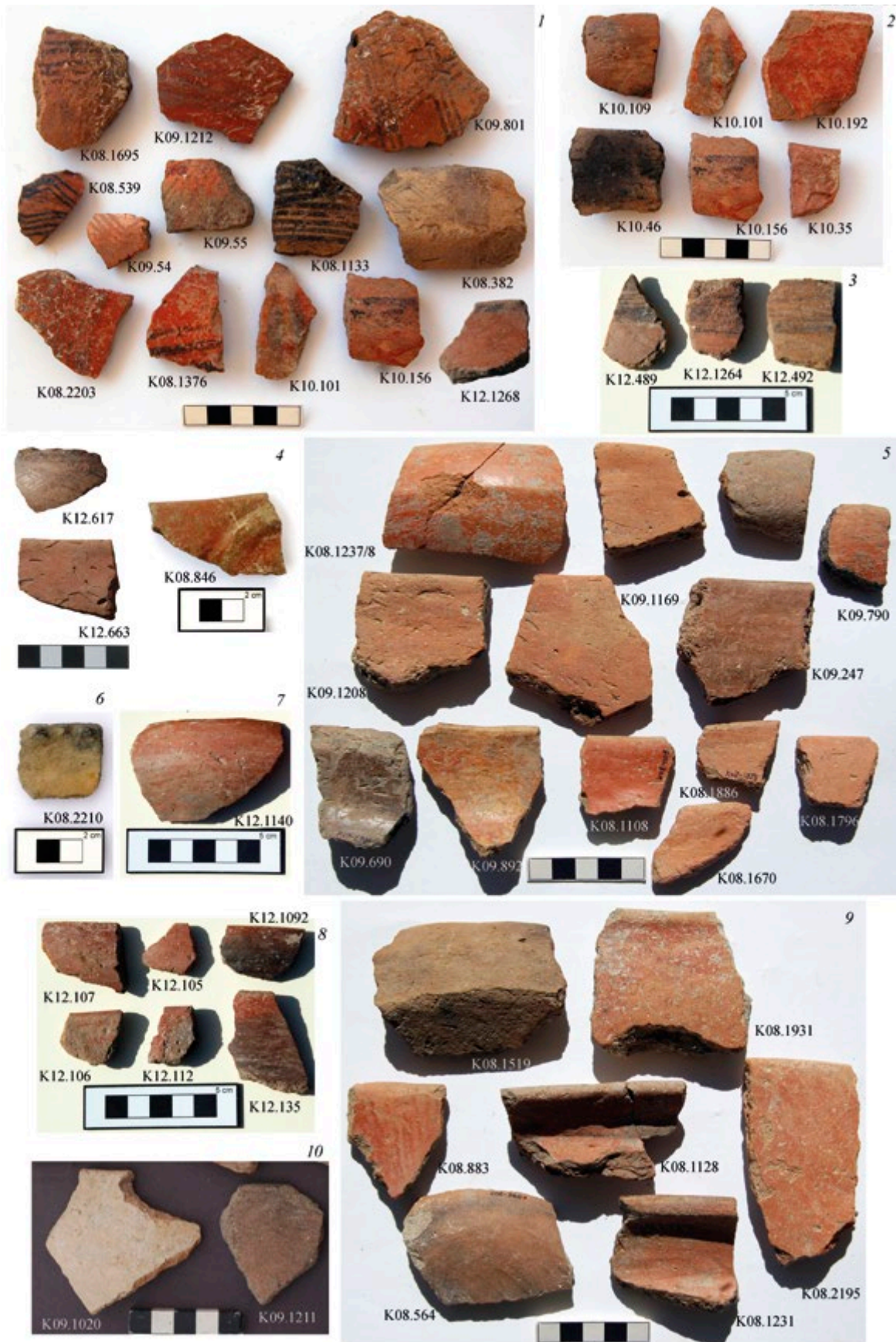


Plate 16

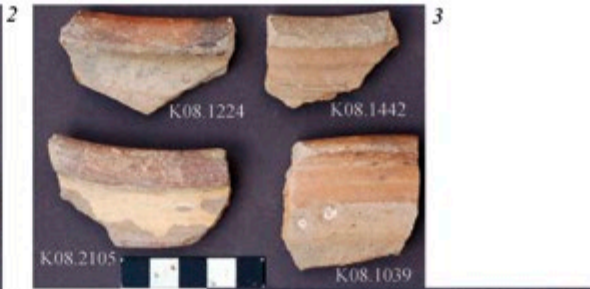




Plate 18





K09.791 K09.1242 K09.318



2



3



Plate 20



enlargement (picture 1)





6

Plate 22





Plate 24



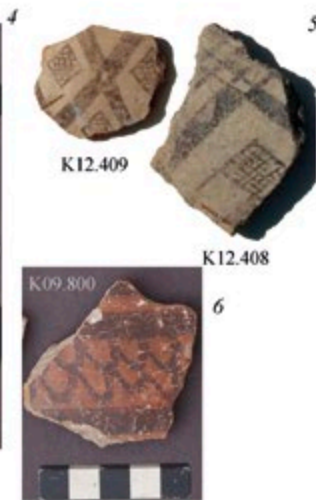


Plate 26





enlargement



Plate 28

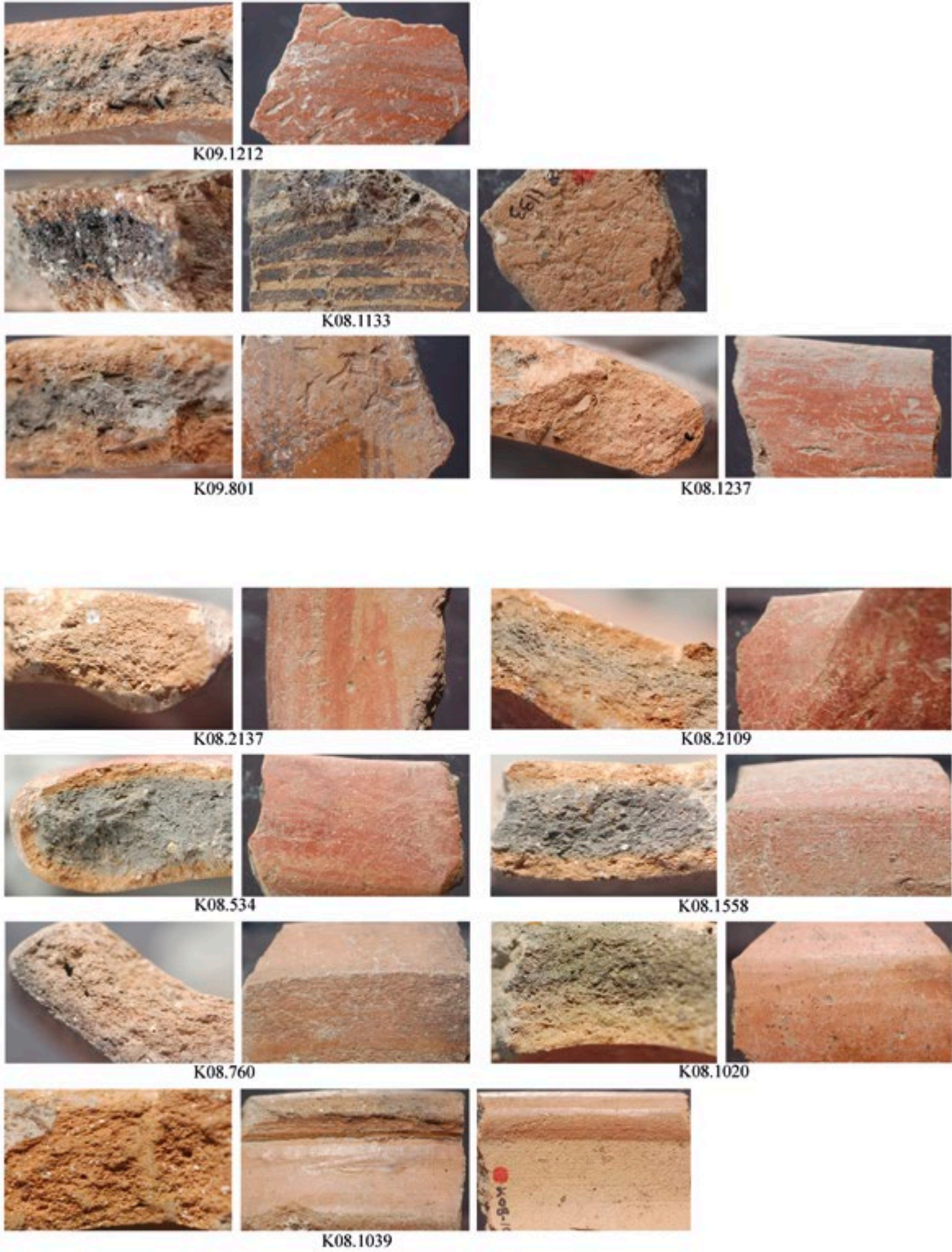


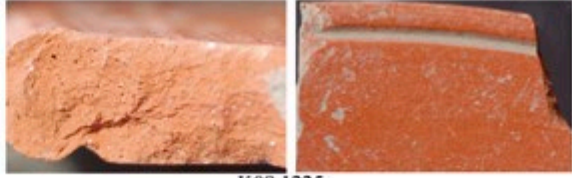
Plate 29



K08.287



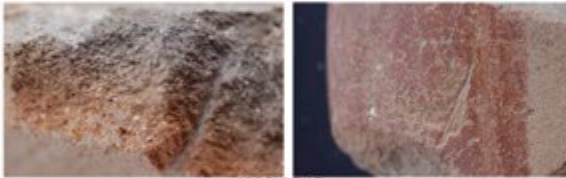
K08.1750



K09.1225



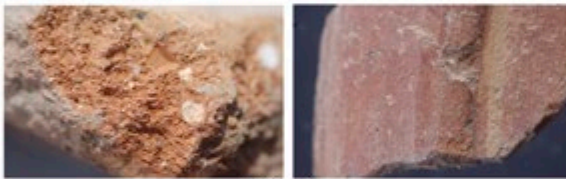
K09.43



K08.1747



K08.1638



K08.237



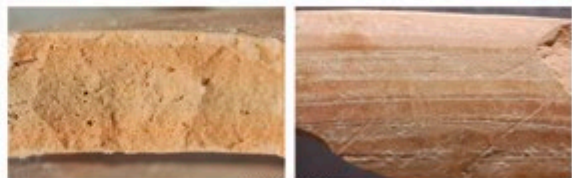
K09.276



K08.2030



K08.665



K08.2064



K08.1851



K08.587

Plate 30

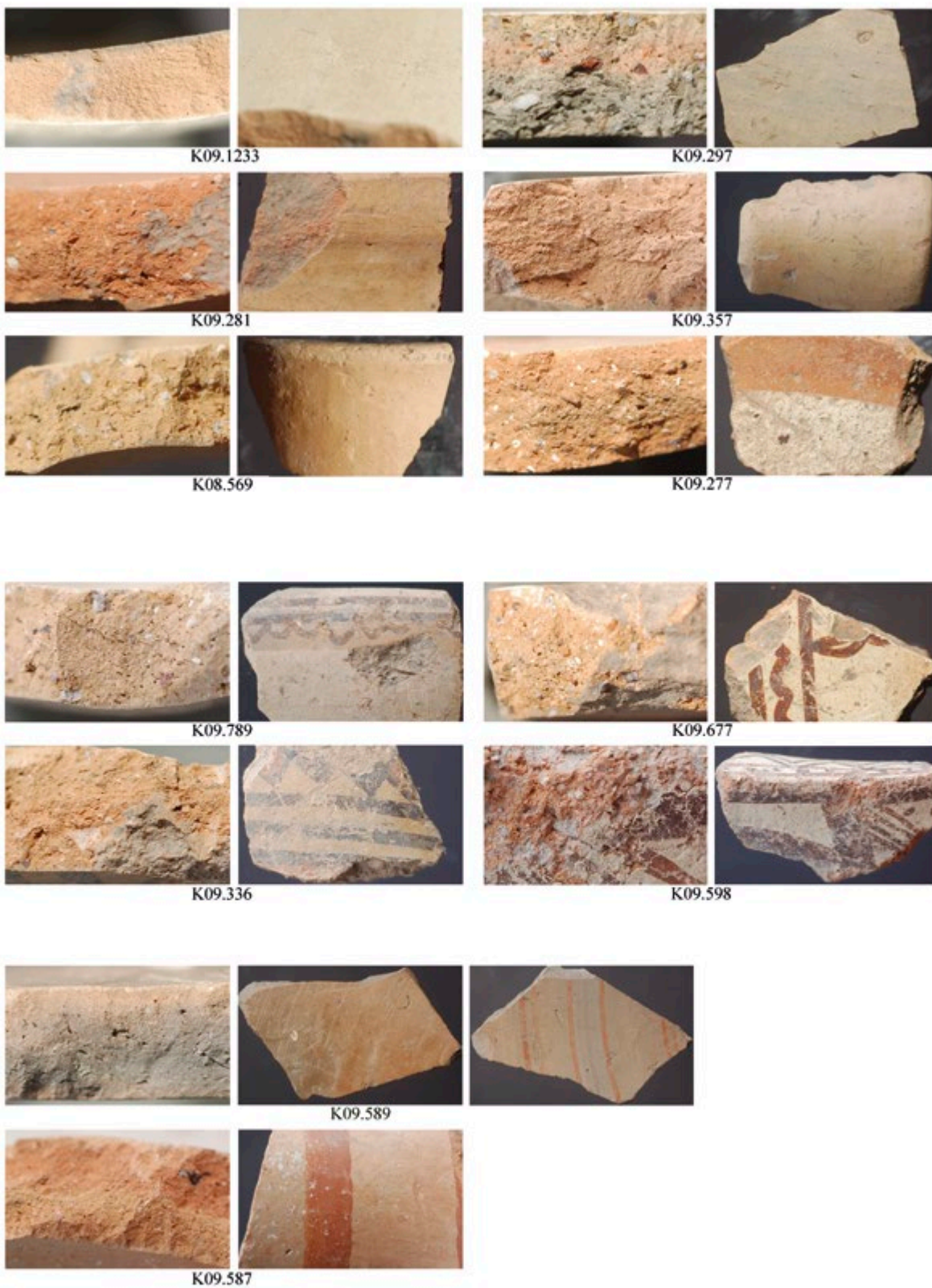
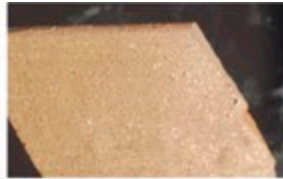


Plate 31



K08.1086



K08.1606



K09.1024



K08.1019



K08.1085



K08.271



K09.239



K09.209



K09.66



K09.213



K09.662



K09.206



K09.447



Plate 32





K08.2205



K08.362a



K09.1242



K08.1816

K08.1995

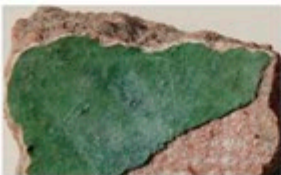


K08.1

K09.273

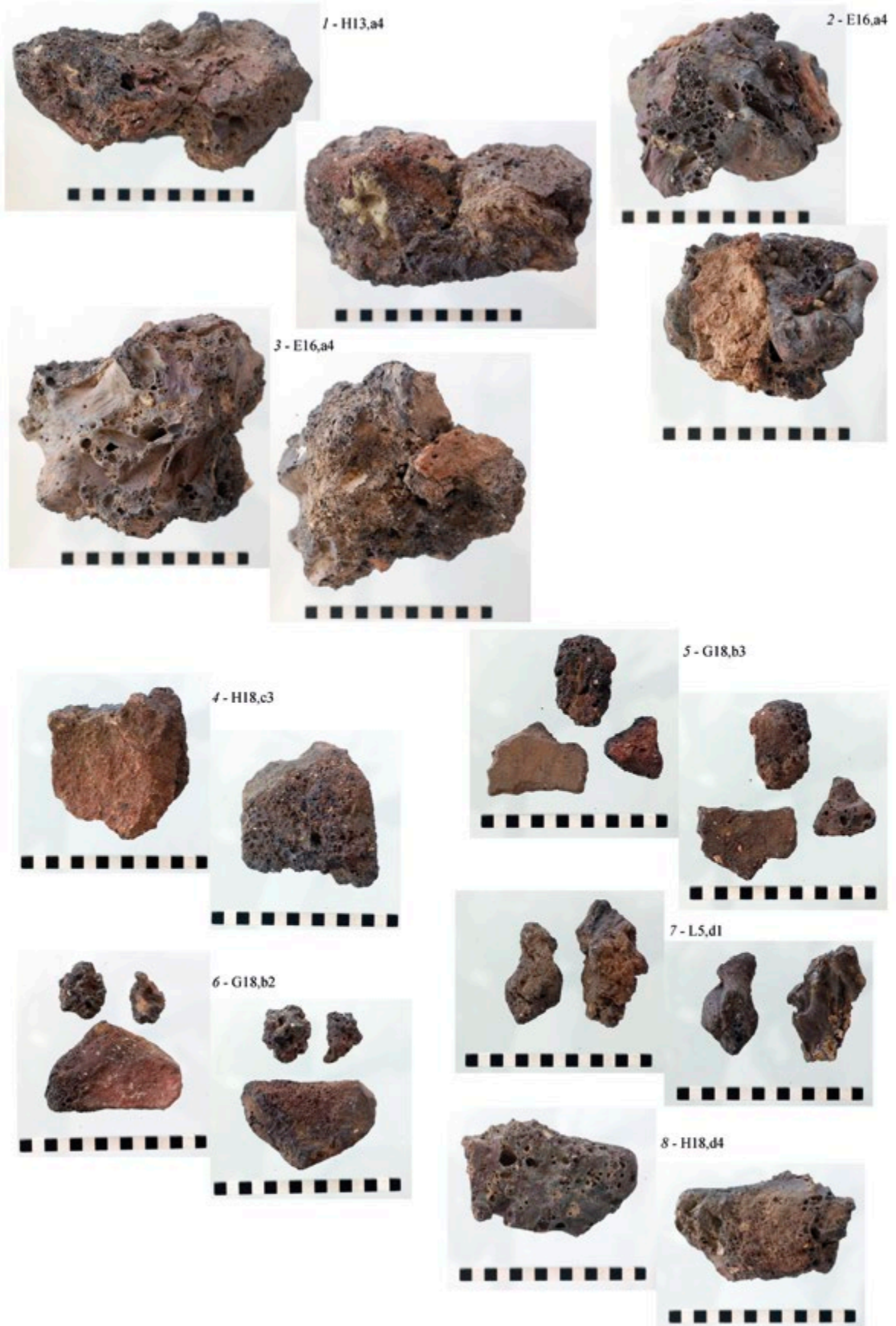


K09.960



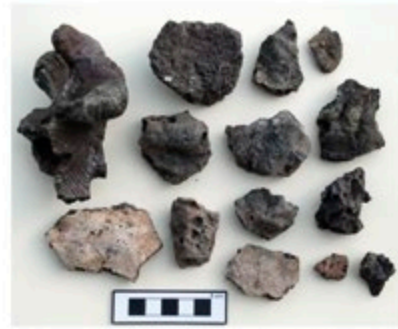
K12.30

Plate 34

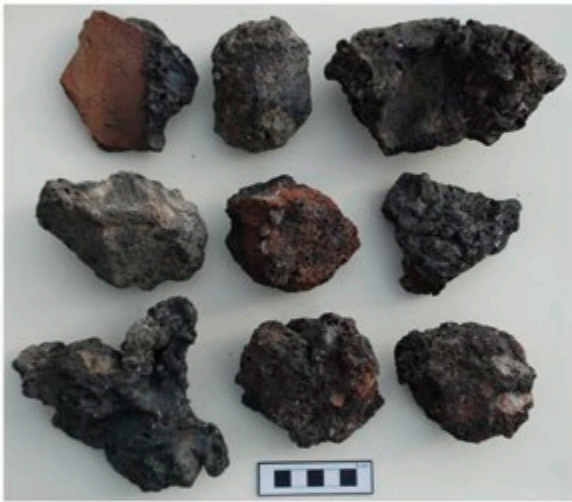




1 - Lot 9, band 6



2 - Lot 9, band 5b



3 - Lot 9, band 9



4 - Lot 12, band 6



5 - Lot 9, band 9

Plate 36





Plate 38



1 - UK12.E.19

2 - UK12.E.14



3 - UK12.E.17

4 - UK12.E.15



5 - UK12.E.23



6 - UK09.Es.7



Taşlık Höyük (Site 3)



Plate 40



SS1w and SS1wnw: Western and Western-North-Western outskirts of the mound, ground level



STUDIA ASIANA
A series established in 2001 by
Alfonso Archi, Onofrio Carruba and Franca Pecchioli Daddi.

- Le funzioni sintattiche degli elementi avverbiali di luogo ittiti. Anda(n), appa(n), katta(n), katti-, peran, para, ser, sara,* Rita Francia, Herder Libreria editrice, 2002
- La similitudine nella magia analogica ittita,* Giulia Torri, Herder Libreria editrice, 2003
- Narrare gli eventi. Atti del Convegno degli egittologi e degli orientalisti italiani in margine allamosta «La battaglia di Qadesh»,* Franca Pecchioli Daddi, Herder Libreria editrice, 2005
- Lineamenti di grammatica ittita (prima edizione),* Rita Francia, Herder Libreria editrice, 2005
- Central-North Anatolia in the Hittite period. New perspectives in light of recent research. Acts of the international Conference Held at the University of Florence,* Carlo Corti, Franca Pecchioli Daddi, Giulia Torri, Herder Libreria editrice, 2009
- Ricerche italiane in Anatolia: risultati delle attività sul campo per le Età del bronzo e del Ferro,* Stefania Mazzoni, Franca Pecchioli Daddi, Giulia Torri, Anacleto D'Agostino, Herder Libreria editrice, 2012
- Studi italiani di metrologia ed economia del Vicino Oriente Antico dedicati a Nicola Parise in occasione del Suo settantesimo compleanno,* Enrico Ascalone, Luca Peyronel, Herder Libreria editrice, 2011
- Lineamenti di grammatica ittita (seconda edizione),* Rita Francia, Herder Libreria editrice, 2012
- Sacred Landscapes of Hittite and Luwians. Proceedings of the International Conference in Honour of Franca Pecchioli Daddi, Florence, February 6th-8th 2014,* Anacleto D'Agostino, Valentina Orsi, Giulia Torri, Firenze University Press, 2015
- The Uşaklı Höyük Survey Project (2008-2012). A final report,* Stefania Mazzoni, Franca Pecchioli Daddi, Firenze University Press, 2015

