



OPEN ACCESS

Original research

Optical coherence tomography in secondary progressive multiple sclerosis: cross-sectional and longitudinal exploratory analysis from the MS-SMART randomised controlled trial

Floriana De Angelis ,^{1,2} James R Cameron,³ Arman Eshaghi,¹ Richard Parker,⁴ Peter Connick ,³ Jonathan Stutters,¹ Domenico Plantone ,^{1,5} Anisha Doshi,¹ Nevin John ,^{1,6} Thomas Williams,¹ Alberto Calvi ,^{1,7} David MacManus,¹ Frederik Barkhof,^{1,2,8} Siddharthan Chandran ,³ Christopher J Weir,⁴ Ahmed Toosy ,¹ Jeremy Chataway,^{1,2} MS-SMART trial investigators

► Additional supplemental material is published online only. To view, please visit the journal online (<https://doi.org/10.1136/jnnp-2024-334801>).

For numbered affiliations see end of article.

Correspondence to

Dr Floriana De Angelis; f.deangelis@ucl.ac.uk

Received 8 August 2024

Accepted 30 October 2024

ABSTRACT

Background Optical coherence tomography (OCT) inner retinal metrics reflect neurodegeneration in multiple sclerosis (MS). We explored OCT measures as biomarkers of disease severity in secondary progressive MS (SPMS).

Methods We investigated people with SPMS from the Multiple Sclerosis-Secondary Progressive Multi-Arm Randomisation Trial OCT substudy, analysing brain MRIs, clinical assessments and OCT at baseline and 96 weeks. We measured peripapillary retinal nerve fibre layer (pRNFL) and macular ganglion cell-inner plexiform layer (GCIPL) thicknesses. Statistical analysis included correlations, multivariable linear regressions and mixed-effects models.

Results Of the 212 participants recruited at baseline, 192 attended at 96 weeks follow-up. Baseline pRNFL and GCIPL thickness correlated with Symbol Digit Modalities Test (SDMT) (respectively, $r=0.33$ (95% CI 0.20 to 0.47); $r=0.39$ (0.26 to 0.51)) and deep grey matter volume (respectively, $r=0.21$ (0.07 to 0.35); $r=0.28$ (0.14 to 0.41)). pRNFL was associated with Expanded Disability Status Scale (EDSS) score change (normalised beta (B)) $=-0.12$ (-0.23 to -0.01). Baseline pRNFL and GCIPL were associated with Timed 25-Foot Walk change (T25FW) (respectively, $B=-0.14$ (-0.25 to -0.03); $B=-0.20$ (-0.31 to -0.10)) and 96-week percentage brain volume change (respectively, $B=0.14$ (0.03 to 0.25); $B=0.23$ (0.12 to 0.34)). There were significant annualised thinning rates: pRNFL (-0.83 $\mu\text{m}/\text{year}$) and GCIPL (-0.37 $\mu\text{m}/\text{year}$).

Conclusions In our cohort of people with SPMS and long disease duration, OCT measures correlated with SDMT and deep grey matter volume at baseline; EDSS, T25FW and whole brain volume change at follow-up.

INTRODUCTION

There are a large number of potential neuroprotective and remyelinating compounds in progressive multiple sclerosis (MS),¹ but the current approach for testing new agents is time-consuming. Standard

WHAT IS ALREADY KNOWN ON THIS TOPIC

⇒ Many compounds may offer neuroprotection in progressive multiple sclerosis (MS); however, current outcome measures have limitations and are costly. Optical coherence tomography (OCT) has the potential to provide valuable and cost-effective outcome measures in progressive MS trials.

WHAT THIS STUDY ADDS

⇒ Only a few trials have studied OCT measures longitudinally in progressive MS, especially in secondary progressive MS (SPMS) with long disease duration. Our study presents novel OCT data in a well-characterised SPMS cohort not on disease-modifying drugs.

HOW THIS STUDY MIGHT AFFECT RESEARCH, PRACTICE OR POLICY

⇒ OCT may have a prognostic role in SPMS and could be used in cognitive studies or as a predictor of physical impairment.

MRI-led phase 2b paradigms are expensive and require relatively long observation periods to detect meaningful change in relation to biological variability and slow accrual of atrophy.² Hence, there is a need to develop more convenient non-MRI outcome measures to monitor disability progression in multisite clinical trials, and optical coherence tomography (OCT) is a clear candidate.

OCT uses low-coherence interferometry to obtain high-resolution images of the retina and its inner layers. Characteristic changes in the retina and optic nerve are found in most people with MS, regardless of their history of optic neuritis (ON), and are thought to reflect neuroaxonal loss.³⁻⁶ OCT retinal measures correlate with MS markers of inflammatory disease and neurodegeneration, as defined by relapses, new T2 lesions,^{7 8} clinical disability and MRI-derived brain atrophy.^{9 10} OCT measures that correlate most strongly are the



© Author(s) (or their employer(s)) 2024. Re-use permitted under CC BY. Published by BMJ.

To cite: De Angelis F, Cameron JR, Eshaghi A, et al. *J Neurol Neurosurg Psychiatry* Epub ahead of print: [please include Day Month Year]. doi:10.1136/jnnp-2024-334801

peripapillary retinal nerve fibre layer (pRNFL) and macular ganglion cell-inner plexiform layer (GCIPL).

In recent times, OCT has gained an important role as a prognostic^{11–15} and diagnostic tool,¹⁶ easily transferable to clinical practice. However, the utility of OCT as an outcome measure in *progressive MS (PMS)* is still unclear. Additionally, most longitudinal studies in the field of OCT have included relapsing–remitting MS^{9 12 15 17–19} with limited application of OCT in progressive MS trials.^{19–22} Therefore, more longitudinal OCT clinical research in progressive MS is needed.

Here, we report a cross-sectional and longitudinal OCT substudy, embedded within the reported Multiple Sclerosis-Secondary Progressive Multi-Arm Randomisation Trial (MS-SMART), a phase 2b four-arm randomised controlled trial (RCT) investigating neuroprotection in secondary progressive MS (SPMS).^{23 24} The main trial results did not support any treatment effects for the three investigational agents (amiloride, fluoxetine and riluzole). The original preplanned OCT analysis also showed insufficient evidence for a difference in OCT measures between placebo and active arms overall.²⁴ We report post hoc exploratory analyses that examine the value of pRNFL and GCIPL thickness as indicators of disease severity and progression in SPMS.

METHODS

We followed the Advised Protocol for OCT Study Terminology and Elements (APOSTEL) V.2.0 guidance for reporting quantitative OCT studies.²⁵ We quality-checked OCT imaging based on the recommendations of the international consensus quality check criteria OSCAR-IB.²⁶

Study design and participants

The MS-SMART trial (NCT01910259) was a multicentre, phase 2b four-arm RCT investigating neuroprotection in people with SPMS in the United Kingdom.²³ From January 2015 to June 2016, participants were randomised to receive amiloride, fluoxetine, riluzole or placebo for 96 weeks. Key inclusion criteria were age 25–65, Expanded Disability Status Scale (EDSS) score 4.0–6.5, evidence of disability progression in the preceding 2 years, and no MS disease-modifying therapy. SPMS was defined as a gradual worsening due to disease progression rather than relapses as a major cause of increasing disability in the preceding 2 years. People with relapses or treated with steroids within 3 months of their baseline visit were excluded. The primary outcome was MRI-derived brain atrophy at 96 weeks. The study found no significant differences between the active treatments and placebo.^{23 24}

Participants from two MS-SMART trial centres (University College London (UCL) and the University of Edinburgh) were invited to an optional OCT study, for which we excluded those with non-MS ocular pathology or refractive errors beyond ± 6 dioptres. We obtained ocular pathology history from patient reports and available medical or ophthalmic records. We also excluded patients if we found evidence of unexpected non-MS retinal pathology on OCT. Medical histories of visual symptoms and previous ON were obtained from patient reports and records. For patients with indeterminate history of ON, we used p-RNFL normative data to infer previous ON according to age groups (18–29, 30–39, 40–49, 50–59, 60–69 year of age groups) using the reference table from Kennedy *et al* assuming a 99% CI.²⁷ Additionally, subclinical ON was assumed when pRNFL inter-eye thickness difference exceeded 20%.¹⁵

Standard protocol approvals, registrations and patient consents

The MS-SMART trial adhered to the Declaration of Helsinki and ICH Good Clinical Practice guidelines. Ethics approval was granted (REC ID: 13/SS/0007), and all patients provided written informed consent. Additional consent was obtained for the OCT substudy.

Outcomes

All participants underwent OCT scanning for pRNFL and GCIPL thickness, clinical assessment and brain MRI at baseline and 96 weeks. Clinical measures included EDSS, 9-hole peg test (9HPT), Timed 25-Foot Walk (T25FW), Symbol Digit Modalities Test (SDMT) and Sloan low contrast letter acuity (LCLA) 2.5% charts. MRI measures included T2 lesion volume, normalised whole-brain volume (WBV) and grey matter volume (cortical grey matter volume (CGMV) and deep grey matter volume (DGMV)) at baseline and 96 weeks, and percentage brain volume change (PBVC) from baseline to week 96.

OCT scanning and analysis

We (FDA, JRC, DP) performed OCT imaging on a spectral domain OCT Spectralis device (Heyex V.6.9.4.0, Heidelberg Engineering, Heidelberg, Germany) at the two study sites, without pupillary dilatation. Ambient light was dimmed. Two scans per eye were acquired: (1) pRNFL circular scan (diameter 12°, 1536 A-scans, 1 B-scan, automatic real time (ART) 100) manually centred on the optic nerve head with enabled eye-tracking modality. (2) Macular volume scans (UCL site settings: 20°×20° volume scan, 25 B-scans, 1024 A-scans per B-scan, vertical alignment, ART 9; University of Edinburgh site settings: 30°×25° volume scans, 61 B-scans, 768 A-scans per B-scan, posterior pole alignment, ART 12) centred about the fovea with eye tracking enabled. For longitudinal imaging registration, the ‘follow-up option’ was selected. We extracted macular thickness values using a thickness map on a 3 mm-diameter Early Treatment Diabetic Retinopathy Study grid. We obtained macular layer segmentation to quantify the GCIPL thickness with automated segmentation software provided by the vendor (Spectralis, V.6.8a, Heidelberg Engineering, Heidelberg, Germany). OCT imaging and retinal layer segmentation were visually inspected. We (FDA, JRC) manually corrected major segmentation errors and rejected scans that violated international consensus criteria.²⁶ FDA and JRC were blind to participant’s clinical and radiological data at the time of quality check, manual segmentation or manual correction of automated segmentation errors to address potential bias.

MRI scanning and analysis

Brain MRI scans were obtained on a 3T Philips Achieva scanner (Philips Healthcare, Best, the Netherlands) at the UCL site and on a 3T Siemens Verio scanner (Siemens Healthcare, Erlangen, Germany) at the University of Edinburgh site. We acquired the following scans: axial proton density (PD)-weighted fast spin echo, in-plane resolution 1 mm², slice thickness 3 mm; axial T2-weighted fast spin echo, in-plane resolution 1 mm², slice thickness 3 mm; axial fluid-attenuated inversion recovery, in-plane resolution 1 mm², slice thickness 3 mm; axial three-dimensional (3D)-T1 spoiled gradient-recalled echo with 1 mm³ resolution. MRI scan quality control was performed at the central MRI facility (Queen Square MS Centre Trial Office).

To quantify T2 lesion volume at baseline, we manually contoured lesions on PD/T2 scans using a semi-automated tool

(JIM7, Xinapse Systems). T2 lesion masks were used to lesion-fill 3D T1-weighted images, and brain images were extracted to obtain WBV, grey matter volume (subsegmented into CGMV and DGMV), white-matter volume and total intracranial volume using the Geodesic Information Flows algorithm.²⁸ Scaling factors for brain volume measures normalised against head size were estimated with Structural Image Evaluation, using Normalization, of Atrophy - Cross-sectional (SIENAX).^{29 30} For longitudinal analysis, we estimated PBVC with Structural Image Evaluation, using Normalization, of Atrophy (SIENA).^{24 29 30}

Statistical analysis

All statistical analyses were performed with R, V4.4.1 (R Foundation for Statistical Computing).³¹ We describe quantitative variables using means and SD or medians and IQRs, and ordinal variables with absolute numbers and percentages.

As the trial included four agents (amiloride, fluoxetine, riluzole and placebo), all statistical models were adjusted for treatment arm, to account for any potential treatment effects during the trial period. Additionally, due to OCT scanning differences between UCL and Edinburgh, all statistical models were also adjusted by site. Finally, all statistical models were adjusted for history of ON at the eye or patient level as appropriate.

Baseline analysis

We used Pearson's or Spearman's correlations as appropriate to look at associations between baseline OCT, MRI and clinical variables. This analysis was carried out at the patient level; therefore, to obtain a unique pRNFL and GCIPL value per eye, we averaged the OCT and LCLA 2.5% values across the eyes for patients with no history of ON and used only the values from the unaffected eye for those without previous history of ON. We removed patients with history of bilateral ON.

Longitudinal analysis

Statistical models were estimated separately for pRNFL and GCIPL as response variables.

To evaluate annualised OCT rates of change, we used linear mixed-effects models at eye-level accounting for within-patient and between-visit inter-eye measures (with random subject and eye-specific intercepts and random slopes in time). The fixed effects interactions allowed us to evaluate differences in rates of change between ON and non-ON eyes. Models were adjusted for age, sex, disease duration, site, treatment allocation.

To examine the associations between baseline OCT measures and clinical/MRI interval changes after 96 weeks, we used linear mixed-effects models at the eye level (subjects as random intercepts), adjusted for age, sex, disease duration, site, treatment allocation, ON history. As visual acuity can affect SDMT performance, we also adjusted for low contrast visual acuity as appropriate.

To analyse the relationship between OCT measure thickness percentage change and brain volume percentage change, we performed multivariable linear regressions adjusting for age, sex, disease duration, site, treatment allocation and history of ON. This analysis was done at the patient level, removing eyes with previous ON. To achieve that, we first calculated the pRNFL and GCIPL percentage thickness change per each unaffected eye as follows:

$$\left\{ \frac{[(96\text{weekOCTmeasure} - \text{baselineOCTmeasure}) \div \text{baselineOCTmeasure}] \times 100}{\text{}} \right\}$$

Subsequently, we averaged the OCT percentage thickness change across both eyes, to obtain only one value per subject.

We considered $p < 0.05$ to be statistically significant. We did not impute missing values. Multiple comparison corrections were not performed due to the exploratory nature of this study.

RESULTS

Baseline analysis

Baseline characteristics

Of the total 269 patients enrolled in the MS-SMART trial at the UCL and University of Edinburgh centres, 260 consented to take part in the OCT substudy. Of these, 214 ultimately underwent OCT scanning at baseline (figure 1). After quality checking of baseline scans, 13 eyes were excluded. Additionally, two subjects were excluded from the analysis as we could not determine if they had previously experienced ON. For 17 subjects, a history of ON was inferred using absolute pRNFL thickness thresholds based on normative data (n=6 classified as NON, n=8 as bilateral ON and n=3 as unilateral ON). Six subjects were classified as having subclinical unilateral ON based on >20% pRNFL thickness difference between the two eyes. Details of the study profile are shown in figure 1.

Table 1 reports the baseline characteristics. Participants had average age of 54 years, had a long mean disease duration (around 22 years) and severe disability (median EDSS 6.0). Most of the participants had a disease duration longer than 5 years (97%), with a median disease duration of 21 years (IQR 16–29 years).

There were no substantial differences in participant characteristics between subjects that consented or not to take part in the OCT study or across the two study sites, but the UCL participants appeared to be slightly less impaired on EDSS and SDMT measures (online supplemental tables 1 and 2).

Correlation analyses

Results from the baseline correlation analysis are summarised in table 2.

The pRNFL and GCIPL thicknesses strongly correlated with visual acuity as measured by LCLA 2.5%. OCT measures were not correlated with baseline EDSS, T25FW or 9HPT values. However, they did show significant associations with the cognitive measure SDMT (table 2).

Additionally, thicker retinal measures (pRNFL and GCIPL) correlated with larger DGMV. GCIPL only correlated with smaller T2LV.

No other significant correlations were noted between OCT and MRI measures.

Longitudinal analysis

Annualised change of OCT measures

Figure 2 shows the annualised rates of change of pRNFL and GCIPL in the overall group including all eyes regardless history of ON, with statistically significant thinning demonstrated by mean values of $-0.83 \mu\text{m/year}$ (95% CI -1.04 to -0.62) and $-0.37 \mu\text{m/year}$ (95% CI -0.53 to -0.21), respectively (figure 2). Mean changes of thinning when looking at eyes with history ON were $-0.69 \mu\text{m/year}$ (95% CI -1.04 to -0.34) for pRNFL and $-0.25 \mu\text{m/year}$ (95% CI -0.50 to 0.002) for GCIPL, compared with mean changes of $-0.97 \mu\text{m/year}$ (95% CI -1.18 to -0.76) and $-0.49 \mu\text{m/year}$ (95% CI -0.65 to -0.33) for eyes without history of ON (figure 2). There was no statistically significant difference in the rate of thinning between the groups based on ON history. There was no statistically significant association between disease duration and retinal layer thinning in the mixed effect models (CI -0.28 to 0.09 for the relationship between

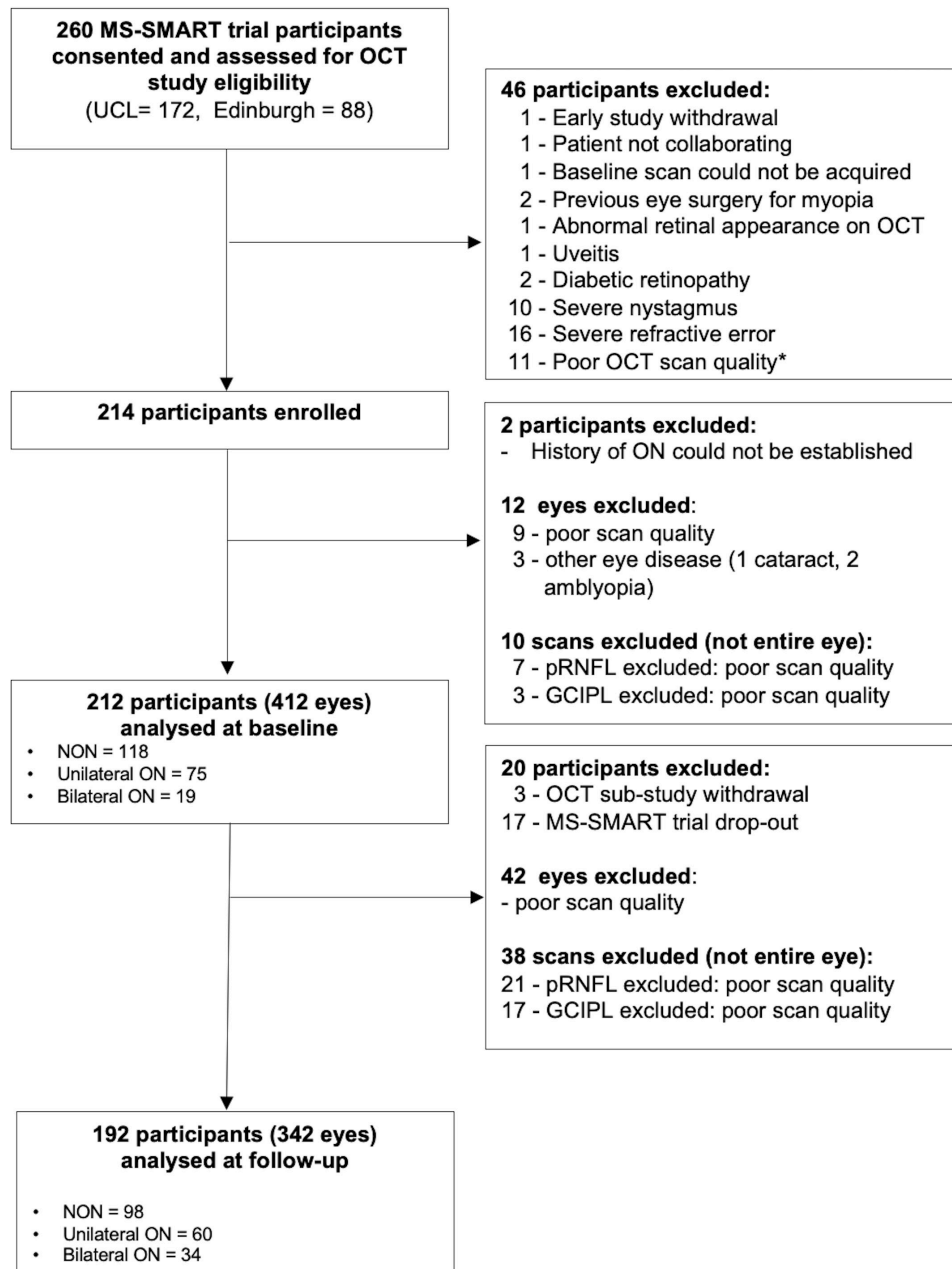


Figure 1 Study profile. Total number of MS-SMART trial participants randomised at UCL= 176 (172 consented the OCT substudy). Total number of participants randomised at Edinburgh = 93 (88 consented the OCT substudy). *For n=11 subjects excluded due to poor OCT imaging quality possible underlying retinal abnormalities were not systematically recorded. GCIPL, ganglion cell-inner plexiform layer; NON, no history of optic neuritis; OCT, optical coherence tomography; ON, optic neuritis; pRNFL, peripapillary retinal nerve fibre layer; UCL, University College London.

pRNFL and disease duration; CI -0.36 to 0.04 for the relationship between GCIPL and disease duration).

As the GCIPL acquisition protocols differed between the two sites, we conducted an additional analysis focusing on the rate of GCIPL change at each study site separately (online supplemental fig. 1 and online supplemental table 5–7). This analysis indicated that the overall study’s GCIPL thinning rate was primarily influenced by the UCL site, where the rate of change was -0.23 μm/year (95% CI -0.38 to -0.08), compared with Edinburgh, where the rate of change was -0.76 μm/year (95% CI -1.86 to -0.34). However, the number of GCIPL scans available at the UCL site (n=231) was more than double that of Edinburgh (n=94).

Associations between baseline OCT measures and clinical and MRI change

Significant associations were found between thinner baseline pRNFLs and GCIPLs and greater clinical disability worsening and/or thinner brain volumes. Table 3 shows that thinner pRNFL at baseline was associated with greater disability as measured by EDSS after 96 weeks. Larger pRNFL and GCIPL at baseline were associated with slower T25FW speed at follow-up. Also, larger baseline OCT measures were associated with reduced rates of whole brain atrophy (PBVC) at 96 weeks. No associations were seen between OCT measures and changes in 9HPT, SDMT or other MRI variables.

Table 1 Baseline characteristics of participants

	n=212
Age, years mean (SD)	54.4 (7)
Female sex, number (%)	149 (63)
Disease duration, years mean (SD)	22.3 (9.8)
median (IQR)	21 (16–29)
Progression duration, years mean (SD)	8.2 (5.8)
EDSS, score median (IQR)	6.0 (5.5–6.5)
9HPT, sec mean (SD)	39.8 (53.7)
T25FW, sec mean (SD)	18.5 (22.9)
SDMT, number of correct answers median (IQR)	48 (39–53)
LCLA 2.5%, number of correct answers median (IQR)	18 (10–28.125)
pRNFL thickness, μm mean (SD)	83.3 (13.4)
GCIPL thickness, μm mean (SD)	75.2 (13.9)
WBV, mL mean (SD)	1426.9 (75.1)
DGMV, mL mean (SD)	45.2 (3.8)
CGMV, mL mean (SD)	797.4 (39.4)
T2LV, mL mean (SD)	11.9 (11.4)
9HPT is calculated as the average of the mean of the two attempts with each hand. OCT and LCLA measures are calculated as right- and left-eye value means.	
CGMV, cortical grey matter volume; DGMV, deep grey matter volume; EDSS, Expanded Disability Status Scale; GCIPL, ganglion cell-inner plexiform layer; 9HPT, 9-hole peg test; LCLA, low contrast letter acuity; pRNFL, peripapillary retinal nerve fibre layer; SDMT, symbol digit modalities test; T25FW, Timed 25-Foot Walk; T2LV, T2 lesion volume; WBV, whole-brain volume.	

Relationship between percentage OCT retinal thickness change and PBVC over 96 weeks

pRNFL mean (SD) percentage thickness change was -2.00% (2.82), calculated at the patient level as the average between left and right eye. There was no significant association between percentage thickness change of pRNFL and PBVC ($\beta=0.07\%$, 95% CI -0.22 to 0.37).

Table 2 Correlation analysis between OCT and clinical and MRI measures at baseline

		pRNFL	GCIPL
Clinical variables			
EDSS, score	<i>r</i>	-0.08	-0.12
	<i>CI</i>	-0.22 to 0.06	-0.25 to 0.03
9HPT, s	<i>r</i>	0.03	0.03
	<i>CI</i>	-0.11 to 0.17	-0.11 to 0.17
T25FW, s	<i>r</i>	0.02	-0.02
	<i>CI</i>	-0.12 to 0.16	-0.16 to 0.12
SDMT, number of correct answers	<i>r</i>	0.33	0.39
	<i>CI</i>	0.20 to 0.47	0.26 to 0.51
LCLA 2.5%, number of correct answers	<i>r</i>	0.45	0.48
	<i>CI</i>	0.33 to 0.58	0.37 to 0.60
MRI variables			
WBV, mL	<i>r</i>	0.16	0.15
	<i>CI</i>	0.02 to 0.30	0.01 to 0.29
DGMV, mL	<i>r</i>	0.21	0.28
	<i>CI</i>	0.07 to 0.35	0.14 to 0.41
CGMV, mL	<i>r</i>	0.11	0.11
	<i>CI</i>	-0.03 to 0.25	-0.03 to 0.25
T2LV, mL	<i>r</i>	-0.16	-0.24
	<i>CI</i>	-0.30 to -0.02	-0.37 to -0.10

Eyes with history of optic neuritis were removed (number of subjects analysed=193). Person's or Spearman's correlations were used according to the variable nature (continuous or categorical, respectively). Correlation coefficients of magnitude below 0.2 (very weak) were considered non-significant.

CGMV, cortical grey matter volume; DGMV, deep grey matter volume; EDSS, Expanded Disability Status Scale; GCIPL, ganglion cell inner-plexiform layer; 9HPT, 9-hole peg test; LCLA, low contrast letter acuity; pRNFL, peripapillary retinal nerve fibre layer; SDMT, symbol digit modalities test; T2LV, T2 lesion volume; WBV, whole-brain volume.

GCIPL mean (SD) percentage thickness change was -1.11% (2.17). The associations between GCIPL percentage thickness change and PBVC was statistically significant ($\beta=0.25\%$, 95% CI 0.01 to 0.50).

DISCUSSION

We report a large prospective longitudinal OCT study carried out within an RCT of people with SPMS using a Heidelberg Spectralis device. We observed significant mean annualised retinal thinning of $-0.83 \mu\text{m}/\text{year}$ for pRNFL and $-0.37 \mu\text{m}/\text{year}$ for GCIPL. This indicates that OCT can detect retinal changes even in patients with long-standing MS of over 20 years, as highlighted in a recent study.³² However, we also noticed that the retinal layer thinning was more evident in the unaffected eyes, suggesting that, after more than 20 years from MS onset, there may be a floor effect in retinal thinning, especially in eyes that previously experienced ON, as found elsewhere.³³ Furthermore, this floor effect appears to affect the GCIPL more than the pRNFL. We also found that OCT measures, and especially GCIPL, are significantly associated with information processing speed and DGMVs at baseline, in support of previous research suggesting that OCT changes may reflect a loss of higher brain functions and overall neurodegeneration.^{5 34} Although OCT did not correlate with the most common MS disability measures at baseline, both baseline pRNFL and GCIPL thickness appeared to have prognostic value, as they were associated with increased disease severity (EDSS and walking speed worsening) and brain volume loss (PBVC).

OCT has been used as an outcome measure in only a few RCTs of people with progressive MS to date.

In the lipoic acid phase 2 study in SPMS,^{21 35} non-statistically significant mean pRNFL and GCIPL atrophy rates were found, and there were no correlations between OCT changes and whole-brain or grey matter atrophy. Our participants had higher baseline pRNFL and GCIPL mean thicknesses (around $83 \mu\text{m}$ and $75 \mu\text{m}$, respectively), compared with those in the lipoic acid study ($77 \mu\text{m}$ and $67 \mu\text{m}$, respectively). Additionally, our sample size was larger, participants were younger and had shorter disease duration (22 vs 30 years).²¹

The OCT substudy of the SPRINT-MS trial (ibudilast vs placebo)^{22 36 37} did not report significant pRNFL thinning. However, they used different OCT devices (Zeiss Cirrus vs Heidelberg Spectralis) and included people with PPMS, with an overall shorter disease duration (approximately half that in MS-SMART), which could account for different changes in OCT measures over time. Although PPMS and SPMS share similar neuropathological mechanisms, they may differ clinically.³⁸

We found an association between baseline OCT measures and DGMV at baseline. In a study that included people with progressive MS, Saidha *et al* found that both pRNFL and GCIPL thicknesses were significantly associated with CGMV.³⁹ The same research group carried out a 4-year longitudinal study and suggested that, over time, GCIPL loss mirrors whole-brain and grey matter atrophy, especially in people with progressive MS, thereby reflecting underlying disease progression.⁵

We also found that baseline OCT measures and GCIPL percentage thickness change, and not pRNFL, were associated with PBVC after 96 weeks, which is in keeping with previous reports suggesting that GCIPL may reflect global neurodegeneration better than pRNFL.⁵

Regarding disability, we did not find significant associations between OCT measures and EDSS at baseline, likely due to the narrow EDSS range at baseline. However, the longitudinal

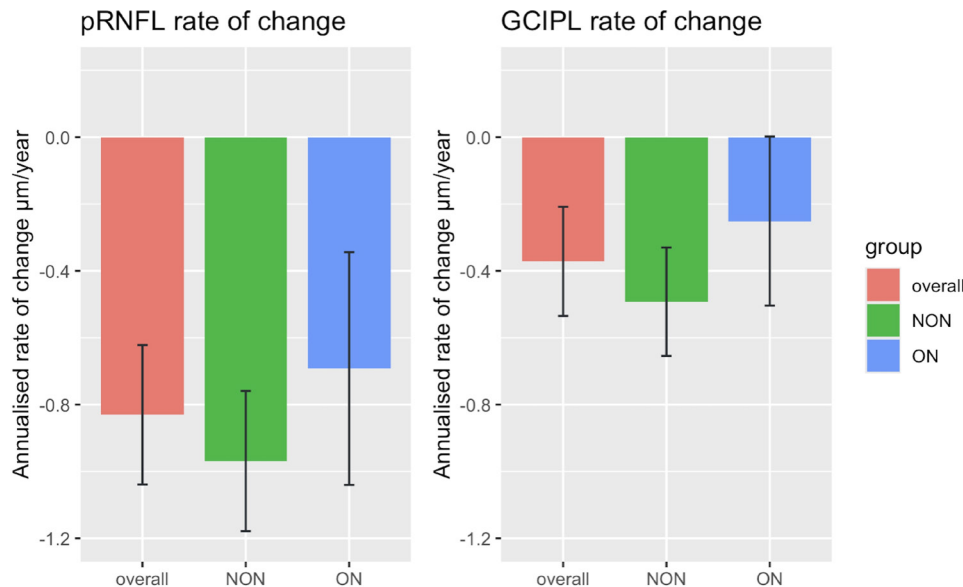


Figure 2 . Annualised rates of change for pRNFL and GCIPL. Mixed effect models are analysed at the eye level adjusted for history of optic neuritis. The bars represent annual mean changes in thickness (µm). Error bars represent confidence intervals. Eye are grouped as: overall group (including all eyes regardless history of optic neuritis); ON group (only eyes with history of optic neuritis), NON group (only eyes without history of optic neuritis). GCIPL, ganglion cell-inner plexiform layer; NON, no history of optic neuritis; ON, optic neuritis; pRNFL, peripapillary retinal nerve fibre layer.

data showed that baseline pRNFL measure could predict EDSS changes, consistently with other studies.^{14 15} Additionally, both baseline GCIPL and pRNFL were inversely associated with worsening in mobility (T25FW), suggesting that retinal thinning may reflect clinical worsening in SPMS.

In the cross-sectional analyses, pRNFL and GCIPL thickness were associated with SDMT. Already in 2013, Wieder *et al* found that information processing speed measured with PASAT and SDMT and visual function tests were correlated in relapsing MS.⁴⁰ However, there is a paucity of studies investigating the relationship between OCT and cognition in MS. Recently, Alba-Arbalat and colleagues found that a strong relationship between the decrease in retinal thickness in people with MS and cognitive decline throughout the course of the disease, with a more pronounced effect observed after 5 years from disease onset.⁴¹ Baetge *et al* analysed 50 subjects with MS (n=44 RRMS, n=6 SPMS) and found that OCT-derived retinal measures were correlated with cognitive flexibility but not with information processing speed (SDMT). However, the study participants had mild to moderate disability (mean EDSS 2.59) and relative short disease duration (median about 7 years).⁴² Coric *et al* found that atrophy of the pRNFL and GCIPL was significantly associated with increased odds of being cognitively impaired in a group of 217 people with MS (SPMS 26%, PPMS 13%).³⁴ Bsteh *et al* found that OCT measures were predictors of cognitive decline.¹⁴ In our

study, the associations between OCT measures and SDMT were not maintained in the longitudinal analyses, suggesting that retinal atrophy occurs more rapidly than the development of an established processing speed deficit.

Our study has several limitations. We lacked a healthy control group, which prevented us from ruling out normal ageing as the cause of the retinal thinning observed, rather than MS-related atrophy. To account for the effect of ageing on retinal atrophy, we adjusted all our statistical models for age. As reference, the IMSVISUAL consortium recently reported normative data from healthy volunteers, showing a decline of -1.31 µm in pRNFL and -1.05 µm in GCIPL per decade.²⁷ The rate of thinning we observed for GCIPL (-0.37 µm/year) is in keeping with other studies, which suggest thinning rates in people with MS ranging from -0.30 to -0.55 µm/year, compared with -0.20 µm/year in healthy controls.¹⁹ In contrast, the rate of pRNFL annualised atrophy in our study (-0.83 µm/year) was only slightly lower than rates described in other investigations, which have reported annual thinning rates of 1–2 µm/year in people with MS. However, compared with GCIPL, pRNFL thinning has shown greater variability across different studies.¹⁹

The macular OCT acquisition protocols, and specifically the number of B scans, were not the same between the two study sites (UCL and Edinburgh), which we need to keep in mind when interpreting the results. The GCIPL has been repeatedly shown to be

Table 3 Baseline OCT measures associated with changes of clinical variables over 96 weeks

Predictor variable at baseline	Variable change between baseline and week 96							
		EDSS score	9HPT sec	T25FW sec	SDMT correct answers	PBVC %	DGMV mm ³	CGMV mm ³
pRNFL, µm	β	-0.12	0.04	-0.14	0.05	0.14	-0.003	-0.03
	<i>CI</i>	-0.23	-0.08	-0.25	-0.08	0.03	-0.11	-0.14
		-0.01	0.17	-0.03	0.17	0.25	0.11	0.08
GCIPL, µm	β	-0.11	0.07	-0.20	0.07	0.23	-0.01	0.04
	<i>CI</i>	-0.22	-0.06	-0.31	-0.06	0.12	-0.13	-0.07
		0.003	0.20	-0.10	0.20	0.34	0.10	0.15

The data presented are normalised.

Mixed-effect models adjusted for age, sex, disease duration, trial site, history of optic neuritis and treatment allocation. When 9HPT and SDMT were the predictors, models were also adjusted for visual acuity. CGMV, cortical grey matter volume; DGMV, deep grey matter volume; EDSS, Expanded Disability Status Scale; GCIPL, ganglion cell-inner plexiform layer; 9HPT, 9-hole peg test; PBVC, percentage brain volume change; pRNFL, peripapillary retinal nerve fibre layer; SDMT, symbol digit modalities test; T25FW, Timed 25-Foot Walk; WBV, whole-brain volume.; β , standardised regression coefficient from mixed-effects model.

superior to the pRNFL as a measure of neurodegeneration, with high reproducibility. Using a small number of B scans, like in the UCL OCT protocol, we may have underestimated the change of GCIPL over time. In addition, the observed mean (SD) thickness percentage changes in pRNFL and GCIPL after 96 weeks were less than 2%, reflecting a small effect size. We speculate that this may be due to floor effect³³; however, the acquisition parameters need to be kept in mind. Advances in OCT acquisition and processing could at least in part reduce this variability in future studies. However, mindful of the different GCIPL acquisition protocols between UCL and Edinburgh, we adjusted all the statistical models by site.

Another limitation of our study was the potential effects of drugs with putative neuroprotective effects in the treatment arms of the MS-SMART clinical trial, which may have had unknown effects on our OCT measurements. However, the main trial results did not show any neuroprotective effects of amiloride, fluoxetine or riluzole on brain atrophy measures. Additionally, we adjusted all statistical analyses for trial arms.

In conclusion, our study suggests that, despite long disease duration, pRNFL and GCIPL thinning is detectable over a 96-week period and is likely to reflect ongoing neuroaxonal loss (neurodegeneration), but there seem to be a floor effect in the retinal thinning especially for the GCIPL and for eyes with previous ON. This is supported by the observed association between OCT measures, grey matter volume and PBVC. OCT measures correlated significantly with information processing speed measure (SDMT) in cross-sectional analyses and were predictors of clinical worsening (EDSS and T25FW) after 96 weeks. These findings may help inform future research utilising OCT measures in people with SPMS.

Author affiliations

¹Queen Square Multiple Sclerosis Centre, Department of Neuroinflammation, UCL Queen Square Institute of Neurology, Faculty of Brain Sciences, University College London, London, UK

²University College London Hospitals, Biomedical Research Centre, National Institute for Health and Care Research, London, UK

³The University of Edinburgh Centre for Clinical Brain Sciences, Edinburgh, UK

⁴Edinburgh Clinical Trials Unit, The University of Edinburgh, Usher Institute of Population Health Sciences and Informatics, Edinburgh, UK

⁵Department of Neuroscience, University of Siena Faculty of Medicine and Surgery, Siena, Italy

⁶Department of Medicine, Monash University, Clayton, Victoria, Australia

⁷Advanced Imaging in Neuroimmunological Diseases lab (ImaginEM), Fundacio Clinic per la Recerca Biomedica, Barcelona, Spain

⁸Department of Radiology and Nuclear Medicine, VU University Medical Centre Amsterdam, Amsterdam, Noord-Holland, Netherlands

X Arman Eshaghi @es_arman and Ahmed Toosy @ahmedtoosy

Acknowledgements We thank all the people with MS who took part in the MS-SMART trials and the study investigators. The MS-SMART trial was an independent investigator-led project sponsored by University College London (UCL). This project (reference 11/30/11) was funded by the Efficacy and Mechanism Evaluation (EME) Programme, a Medical Research Council (MRC) and National Institute for Health Research (NIHR) partnership. Additional funding were provided by the UK MS Society and the National MS Society. Additional support came from the University of Edinburgh, the NIHR Biomedical Research Centre (BRC) and UCL, and the NIHR Leeds Clinical Research Facility (Dental Translational and Clinical Research Unit). Riluzole was provided without charge by Sanofi, which was not involved in either the trial design, running of the trial or analysis. ATT has been supported by recent grants from the Medical Research Council (MR/S026088/1), NIHR BRC (541/CAP/OC/818837) and RoseTrees Trust (A1332 and PGL21/10079). FDA, FB, JC are in part supported by NIHR Biomedical Research Centre (BRC), University College London Hospital. For the purposes of open access, the author has applied a CC-BY public copyright licence to any Author Accepted Manuscript version arising from this submission.

Collaborators MS-SMART trial investigators: Jeremy Chataway, Claudia A M Gandini Wheeler-Kingshott, Floriana De Angelis, Domenico Plantone, Anisha Doshi, Nevin John, Thomas Williams, Jonathan Stutters, Ferran Prados Carrasco, David MacManus, Frederik Barkhof, Sebastien Ourselin, Marie Braisher, Tiggy Beyene, Vanessa Bassan, Alvin Zapata (Queen Square Multiple Sclerosis Centre, University

College London and University College London Hospitals NHS Foundation Trust, London, UK); Siddharthan Chandran, Peter Connick, Dawn Lyle, James Cameron, Daisy Mollison, Shuna Colville, Baljean Dhillon (Anne Rowling Regenerative Neurology Clinic, The University of Edinburgh, Royal Infirmary of Edinburgh, NHS Lothian, Edinburgh, UK); Christopher J Weir, Richard A Parker, Moira Ross, Gina Cranswick, Allan Walker, Lorraine Smith (Edinburgh Clinical Trials Unit[ECTU], Usher Institute, University of Edinburgh, Edinburgh, UK); Gavin Giovannoni, Sharmilee Gnanapavan (Blizard Institute, Barts and The London School of Medicine and Dentistry, Queen Mary University, Barts Health NHS Trust, London, UK); Richard Nicholas (Imperial College Healthcare NHS Trust, London, UK); Waqar Rashid, Julia Aram (Brighton and Sussex University Hospitals NHS Trust, Brighton, UK); Helen Ford (Leeds General Infirmary, Leeds Teaching Hospitals NHS Trust, Leeds, UK); Sue H Pavitt (Dental Translational and Clinical Research Unit, University of Leeds, Leeds, UK); James Overell (The Queen Elizabeth University Hospital Glasgow, NHS Greater Glasgow and Clyde, Glasgow, UK); Carolyn Young, Heinke Arndt (The Walton Centre NHS Foundation Trust, Liverpool, UK); Martin Duddy, Joe Guadagno (Royal Victoria Infirmary, The Newcastle upon Tyne Hospital NHS Foundation Trust, Newcastle, UK); Nikolaos Evangelou (Queens Medical Centre, Nottingham University Hospital NHS Trust, Nottingham, UK); Matthew Craner, Jacqueline Palace (John Radcliffe Hospital, Oxford University Hospitals NHS Foundation Trust, Oxford, UK); Jeremy Hobart (Derriford Hospital, University Hospitals Plymouth NHSTrust, Plymouth, UK); Basil Sharrack, David Paling (Royal Hallamshire Hospital, Sheffield Teaching Hospitals NHS Foundation Trust, Sheffield, UK); Clive Hawkins, Seema Kalra (Royal Stoke University Hospital, University Hospitals of North Midlands NHS Trust, Stoke-on-Trent, UK); Brendan McLean (Royal Cornwall Hospitals NHS Trust, Truro, UK); Nigel Stallard (Statistics and Epidemiology, Division of Health Sciences, Warwick Medical School, University of Warwick, Coventry, UK); and Roger Bastow (patient representative).

Contributors Conception or design of the work: FDA, JRC, JC, SC. Data collection: FDA, JRC, PC, DP, AD, NJ, TW. Data analysis: FDA, AT, AE, RP, CJW, JS, AC, NJ, DMM. Data interpretation: FDA, JRC, RP, CJW, AT, AE, JC. Drafting the article: FDA. Critical revision of the article: FDA, JRC, AE, RP, JS, DP, AD, NJ, TW, AC, DMM, FB, CJW, AT, JC. FDA was the guarantor of the work, accepting full responsibility for the work and/or the conduct of the study, had access to the data, and controlled the decision to publish

Funding This study was funded by Efficacy and Mechanism Evaluation Programme (11/30/11), partnership of Medical Research Council (MRC) and National Institute for Health Research (NIHR).

Competing interests FDA has received speaker honoraria and/or congress fees or served in advisor boards from/for Neurology Academy, Coloplast, Janssen, Merck, Novartis, Roche, Sanofi and is a local principal investigator for commercial and academic trials included CHARIOT-MS, ALITHIOS (Novartis), O'HAND (Roche); she had received a research grant from the Multiple Sclerosis Society of Great Britain and Northern Ireland and funding from National Brain Appeal (Small Acorns fund). AE received research grants from the Medical Research Council (MRC), National Institute for Health and Social Care Research (NIHR), Innovate UK, Biogen, Merck, and Roche; he has served as an advisory board member of Merck Serono and Bristol Myers Squibb. He is the founder and equity stake holder in Queen Square Analytics Limited, he serves on the editorial board of Neurology. NJ is a local principal investigator on commercial MS studies funded by Novartis, Roche and Sanofi. He has received speaker's honoraria from Merck and congress sponsorship covering registration and travel from Novartis. TW reports research funding from the MS-STAT2 trial grant; and honoraria for educational talks from Novartis and Merck. FB serves on the editorial boards of Brain, European Radiology, Journal of Neurology, Neurosurgery & Psychiatry, Neurology, Multiple Sclerosis and Neuroradiology, and serves as consultant for Bayer Schering Pharma, Sanofi-Aventis, Biogen- Idec, TEVA Pharmaceuticals, Genzyme, Merck- Serono, Novartis, Roche, Synthon, Jansen Research and Lundbeck. AT has received speaker honoraria from Merck, Biomedica, Sereno Symposia International Foundation, Bayer and At the Limits and meeting expenses from Merck, Biogen Idec and Novartis and is an associate editor for Frontiers in Neurology—Neuro-ophthalmology section and on the editorial board for Neurology and Multiple Sclerosis Journal. JC has received support in the last 3 years from the Health Technology Assessment (HTA) Programme (National Institute for Health Research, NIHR), the UK MS Society, the US National MS Society and the Rosettes Trust. He has been a local principal investigator for a trial in MS funded by MS Canada. A local principal investigator for commercial trials funded by Ionis and Roche; and has taken part in advisory boards/consultancy for Biogen, Janssen, Lucid, Merck, NervGen, Novartis and Roche. JRC, RP, PC, JS, DP, AD, AC, DMM, SC, CJW have no competing interests.

Patient consent for publication Not applicable.

Ethics approval MS-SMART trial was approved by the Scotland A Research Ethics Committee on 13 January 2013 (REC reference: 13/SS/0007). Participants gave informed consent to participate in the study before taking part.

Provenance and peer review Not commissioned; externally peer-reviewed.

Data availability statement Data are available upon reasonable request. Fully anonymised data are available after review by the sponsor (University College London). An application form detailing specific requirements, rationale, and proposed use should be completed, followed by a data-sharing agreement. Requested data may be made available along with supporting documentation (e.g., data dictionary) on a secure server to appropriate and approved investigators.

Supplemental material This content has been supplied by the author(s). It has not been vetted by BMJ Publishing Group Limited (BMJ) and may not have been peer-reviewed. Any opinions or recommendations discussed are solely those of the author(s) and are not endorsed by BMJ. BMJ disclaims all liability and responsibility arising from any reliance placed on the content. Where the content includes any translated material, BMJ does not warrant the accuracy and reliability of the translations (including but not limited to local regulations, clinical guidelines, terminology, drug names and drug dosages), and is not responsible for any error and/or omissions arising from translation and adaptation or otherwise.

Open access This is an open access article distributed in accordance with the Creative Commons Attribution 4.0 Unported (CC BY 4.0) license, which permits others to copy, redistribute, remix, transform and build upon this work for any purpose, provided the original work is properly cited, a link to the licence is given, and indication of whether changes were made. See: <https://creativecommons.org/licenses/by/4.0/>.

ORCID iDs

Floriana De Angelis <http://orcid.org/0000-0002-9833-1435>
 Peter Connick <http://orcid.org/0000-0002-3892-8037>
 Domenico Plantone <http://orcid.org/0000-0001-6666-7244>
 Nevin John <http://orcid.org/0000-0002-9834-4498>
 Alberto Calvi <http://orcid.org/0000-0002-1953-2803>
 Siddharthan Chandran <http://orcid.org/0000-0001-6827-1593>
 Ahmed Toosy <http://orcid.org/0000-0002-4441-3750>

REFERENCES

- Cunniffe N, Vuong KA, Ainslie D, et al. Systematic approach to selecting licensed drugs for repurposing in the treatment of progressive multiple sclerosis. *J Neurol Neurosurg Psychiatry* 2021;92:295–302.
- Fox RJ, Chataway J. Advancing trial design in progressive multiple sclerosis. *Mult Scler* 2017;23:1573–8.
- Toosy AT, Mason DF, Miller DH. Optic neuritis. *Lancet Neurol* 2014;13:83–99.
- Saidha S, Syc SB, Durbin MK, et al. Visual dysfunction in multiple sclerosis correlates better with optical coherence tomography derived estimates of macular ganglion cell layer thickness than peripapillary retinal nerve fiber layer thickness. *Mult Scler* 2011;17:1449–63.
- Saidha S, Al-Louzi O, Ratchford JN, et al. Optical coherence tomography reflects brain atrophy in multiple sclerosis: A four-year study. *Ann Neurol* 2015;78:801–13.
- Green AJ, McQuaid S, Hauser SL, et al. Ocular pathology in multiple sclerosis: retinal atrophy and inflammation irrespective of disease duration. *Brain (Bacau)* 2010;133:1591–601.
- Balk LJ, Coric D, Knier B, et al. Retinal inner nuclear layer volume reflects inflammatory disease activity in multiple sclerosis; a longitudinal OCT study. *Mult Scler J Exp Transl Clin* 2019;5:2055217319871582.
- Ratchford JN, Saidha S, Sotirchos ES, et al. Active MS is associated with accelerated retinal ganglion cell/inner plexiform layer thinning. *Neurology (Ecricon)* 2013;80:47–54.
- Petzold A, Balcer LJ, Calabresi PA, et al. Retinal layer segmentation in multiple sclerosis: a systematic review and meta-analysis. *Lancet Neurol* 2017;16:797–812.
- Sepulcre J, Murie-Fernandez M, Salinas-Alaman A, et al. Diagnostic accuracy of retinal abnormalities in predicting disease activity in MS. *Neurology (Ecricon)* 2007;68:1488–94.
- Cordano C, Nourbakhsh B, Devereux M, et al. pRNFL as a marker of disability worsening in the medium/long term in patients with MS. *Neurol Neuroimmunol Neuroinflamm* 2019;6:e533e533.
- Bsteh G, Berek K, Hegen H, et al. Macular ganglion cell-inner plexiform layer thinning as a biomarker of disability progression in relapsing multiple sclerosis. *Mult Scler* 2021;27:684–94.
- Lambe J, Fitzgerald KC, Murphy OC, et al. Association of Spectral-Domain OCT With Long-term Disability Worsening in Multiple Sclerosis. *Neurology (Ecricon)* 2021;96:e2058–69.
- Bsteh G, Hegen H, Teuchner B, et al. Peripapillary retinal nerve fibre layer as measured by optical coherence tomography is a prognostic biomarker not only for physical but also for cognitive disability progression in multiple sclerosis. *Mult Scler* 2019;25:196–203.
- Martinez-Lapiscina EH, Arnov S, Wilson JA, et al. Retinal thickness measured with optical coherence tomography and risk of disability worsening in multiple sclerosis: a cohort study. *Lancet Neurol* 2016;15:574–84.
- Vidal-Jordana A, Sastre-Garriga J, Tintoré M, et al. Optic nerve topography in multiple sclerosis diagnostic criteria: Existing knowledge and future directions. *Mult Scler* 2024;30:139–49.
- Rothman A, Murphy OC, Fitzgerald KC, et al. Retinal measurements predict 10-year disability in multiple sclerosis. *Ann Clin Transl Neurol* 2019;6:222–32.
- Guerrieri S, Comi G, Leocani L. Optical Coherence Tomography and Visual Evoked Potentials as Prognostic and Monitoring Tools in Progressive Multiple Sclerosis. *Front Neurosci* 2021;15:692599.
- Lambe J, Saidha S, Bermel RA. Optical coherence tomography and multiple sclerosis: Update on clinical application and role in clinical trials. *Mult Scler* 2020;26:624–39.
- Rust R, Chien C, Scheel M, et al. Epigallocatechin Gallate in Progressive MS: A Randomized, Placebo-Controlled Trial. *Neurol Neuroimmunol Neuroinflamm* 2021;8.
- Winges KM, Murchison CF, Bourdette DN, et al. Longitudinal optical coherence tomography study of optic atrophy in secondary progressive multiple sclerosis: Results from a clinical trial cohort. *Mult Scler* 2019;25:55–62.
- Bermel RA, Fedler JK, Kaiser P, et al. Optical coherence tomography outcomes from SPRINT-MS, a multicenter, randomized, double-blind trial of ibudilast in progressive multiple sclerosis. *Mult Scler* 2021;27:1384–90.
- Chataway J, De Angelis F, Connick P, et al. Efficacy of three neuroprotective drugs in secondary progressive multiple sclerosis (MS-SMART): a phase 2b, multiarm, double-blind, randomised placebo-controlled trial. *Lancet Neurol* 2020;19:214–25.
- De Angelis F, Connick P, Parker RA, et al. Amiloride, fluoxetine or riluzole to reduce brain volume loss in secondary progressive multiple sclerosis: the MS-SMART four-arm RCT. *Efficacy Mech Eval* 2020;7:1–72.
- Aytulun A, Cruz-Herranz A, Aktas O, et al. APOSTEL 2.0 Recommendations for Reporting Quantitative Optical Coherence Tomography Studies. *Neurology (Ecricon)* 2021;97:68–79.
- Schipping S, Balk LJ, Costello F, et al. Quality control for retinal OCT in multiple sclerosis: validation of the OSCAR-IB criteria. *Mult Scler* 2015;21:163–70.
- Kenney R, Liu M, Hasanaj L, et al. Normative Data and Conversion Equation for Spectral-Domain Optical Coherence Tomography in an International Healthy Control Cohort. *J Neuroophthalmol* 2022;42:442–53.
- Cardoso MJ, Modat M, Wolz R, et al. Geodesic Information Flows: Spatially-Variant Graphs and Their Application to Segmentation and Fusion. *IEEE Trans Med Imaging* 2015;34:1976–88.
- Smith SM, Zhang Y, Jenkinson M, et al. Accurate, robust, and automated longitudinal and cross-sectional brain change analysis. *Neuroimage* 2002;17:479–89.
- Smith SM, Jenkinson M, Woolrich MW, et al. Advances in functional and structural MR image analysis and implementation as FSL. *Neuroimage* 2004;23 Suppl 1:S208–19.
- R Core Team. R a language and environment for statistical computing. r foundation for statistical computing, vienna. Scientific Research Publishing; 2021. Available: [https://www.scirp.org/\(S\(czeh2tfqw2orz553k1w0r45\)\)/reference/referencespapers.aspx?referenceid=3131254](https://www.scirp.org/(S(czeh2tfqw2orz553k1w0r45))/reference/referencespapers.aspx?referenceid=3131254) [Accessed 17 Feb 2023].
- Krämer J, Balloff C, Weise M, et al. Evolution of retinal degeneration and prediction of disease activity in relapsing and progressive multiple sclerosis. *Nat Commun* 2024;15:5243:5243.
- Balk LJ, Cruz-Herranz A, Albrecht P, et al. Timing of retinal neuronal and axonal loss in MS: a longitudinal OCT study. *J Neurol* 2016;263:1323–31.
- Coric D, Balk LJ, Verrijp M, et al. Cognitive impairment in patients with multiple sclerosis is associated with atrophy of the inner retinal layers. *Mult Scler* 2018;24:158–66.
- Spain R, Powers K, Murchison C, et al. Lipic acid in secondary progressive MS: A randomized controlled pilot trial. *Neurol Neuroimmunol Neuroinflamm* 2017;4:e374.
- Fox RJ, Coffey CS, Conwit R, et al. Phase 2 Trial of Ibudilast in Progressive Multiple Sclerosis. *N Engl J Med* 2018;379:846–55.
- Ehrhardt H, Lambe J, Moussa H, et al. Effects of Ibudilast on Retinal Atrophy in Progressive Multiple Sclerosis Subtypes: Post Hoc Analyses of the SPRINT-MS Trial. *Neurology (Ecricon)* 2023;101:e1014–24.
- Henderson APD, Trip SA, Schlottmann PG, et al. An investigation of the retinal nerve fibre layer in progressive multiple sclerosis using optical coherence tomography. *Brain (Bacau)* 2008;131:277–87.
- Saidha S, Sotirchos ES, Oh J, et al. Relationships between retinal axonal and neuronal measures and global central nervous system pathology in multiple sclerosis. *JAMA Neurol* 2013;70:34–43.
- Wieder L, Gäde G, Pech LM, et al. Low contrast visual acuity testing is associated with cognitive performance in multiple sclerosis: a cross-sectional pilot study. *BMC Neurol* 2013;13:167.
- Alba-Arbalat S, Solana E, Lopez-Soley E, et al. Predictive value of retinal atrophy for cognitive decline across disease duration in multiple sclerosis. *J Neurol Neurosurg Psychiatry* 2024;95:419–25.
- Baetge SJ, Dietrich M, Filser M, et al. Association of Retinal Layer Thickness With Cognition in Patients With Multiple Sclerosis. *Neurol Neuroimmunol Neuroinflamm* 2021;8.